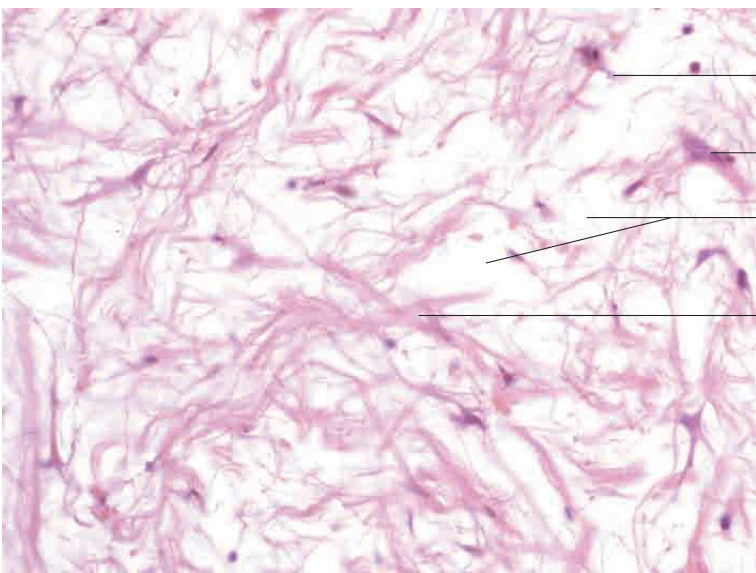
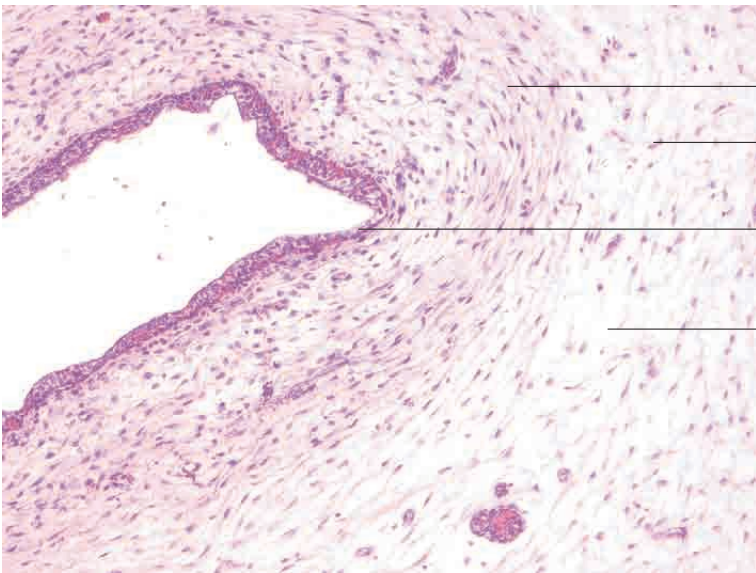
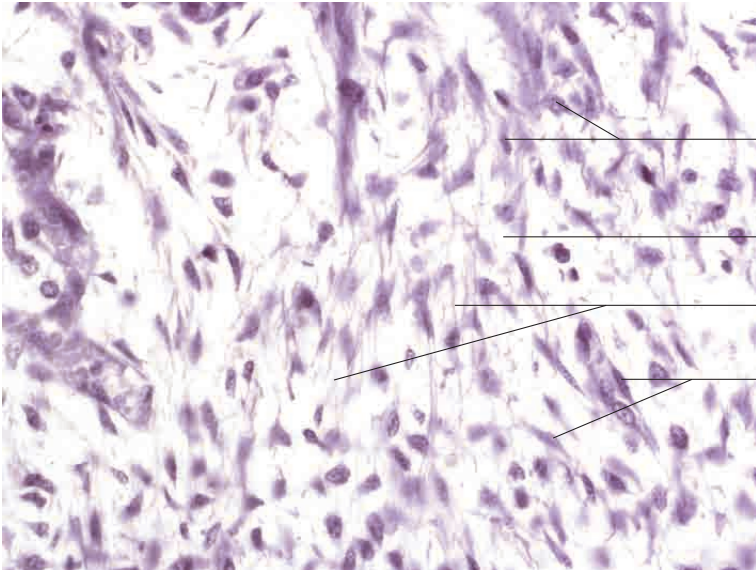
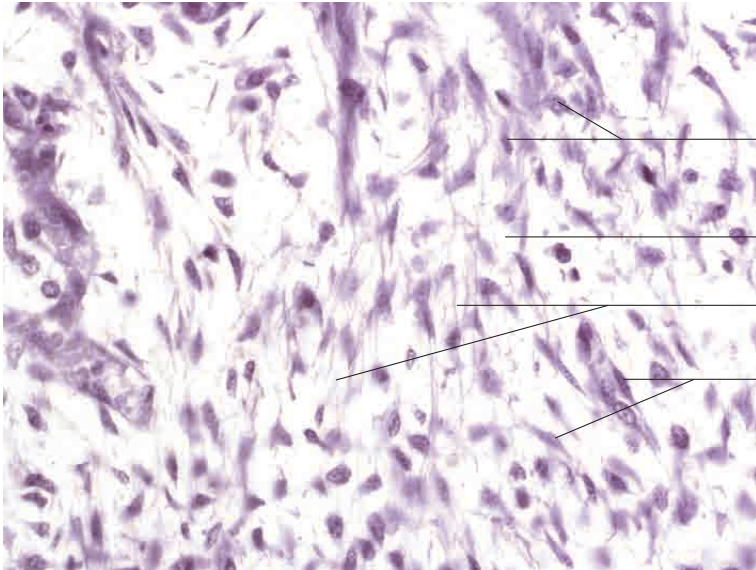


3 Connective and supportive tissues



Embryonic connective tissue



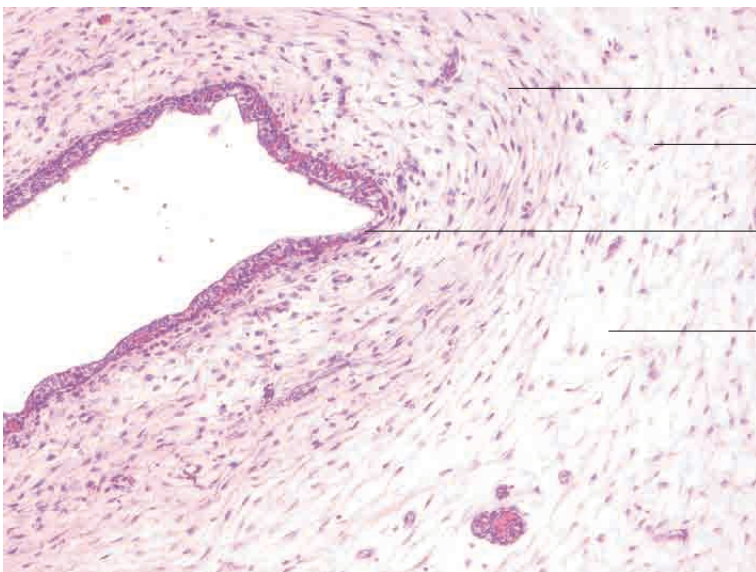
Mesenchymal cells

Unformed ground substance

Formed ground substance

Mesenchymal cells

Mesoderm, dog. Methylene blue stain; x80.



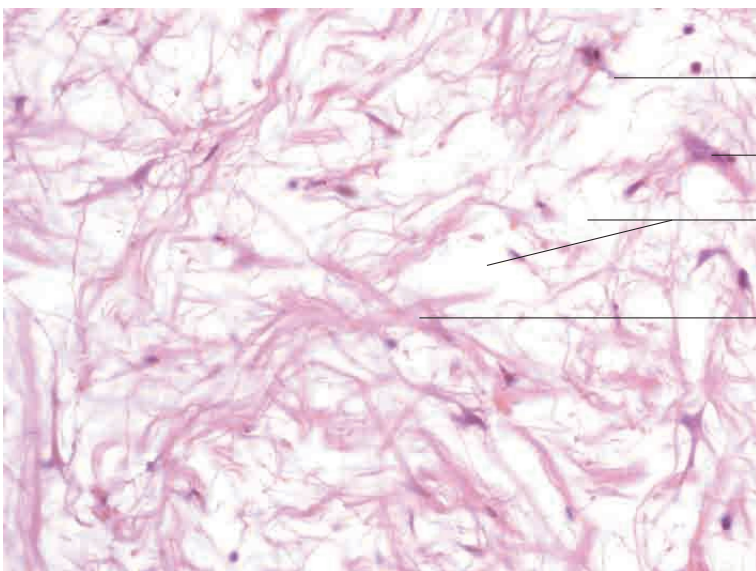
Mesenchymal cells

Meshwork of fibroblasts and mesenchymal cells

Wall of urachus

Meshwork of fibroblasts and mesenchymal cells

Umbilical cord, unborn calf. H.E. stain; x40.



Mesenchymal cells

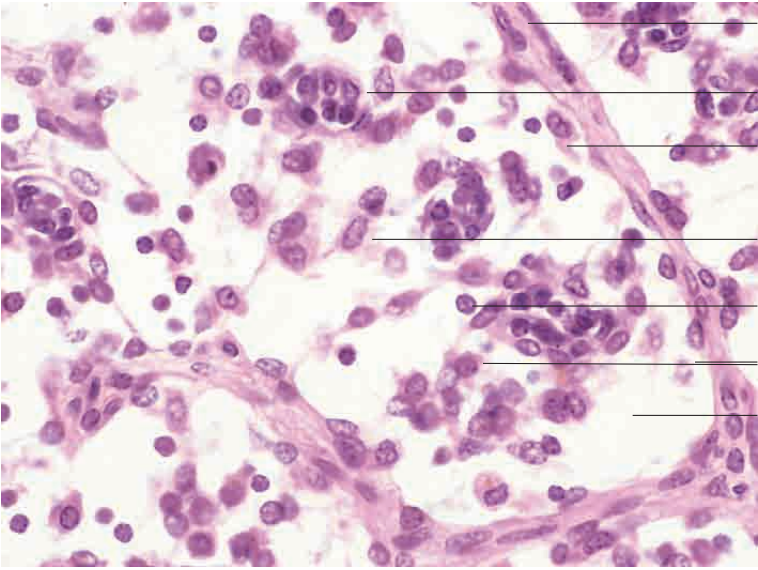
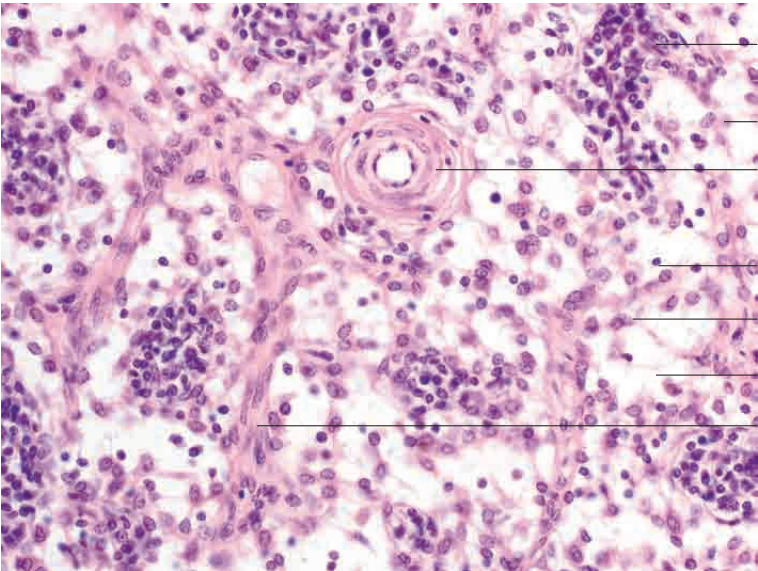
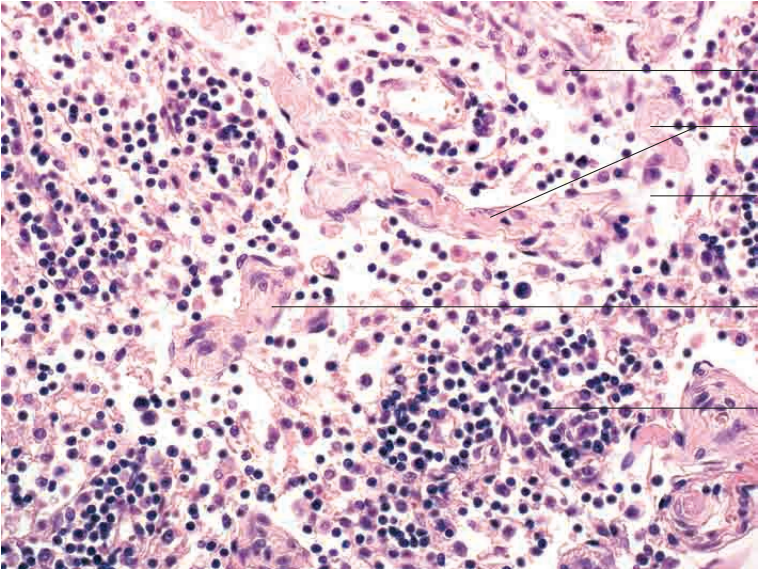
Meshwork of fibroblasts and mesenchymal cells

Expanded spaces containing amorphous ground substance

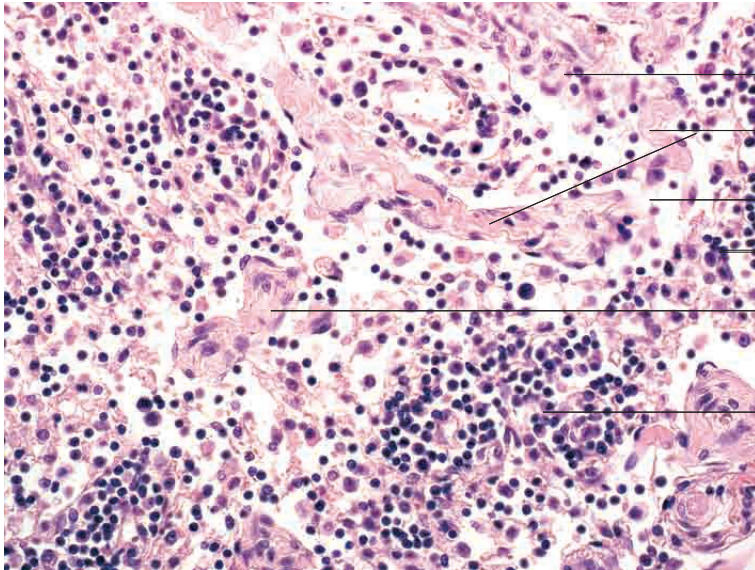
Meshwork of fibroblasts and mesenchymal cells with collagen fibrils

Umbilical cord, unborn calf. H.E. stain; x80.

3 Connective and supportive tissues



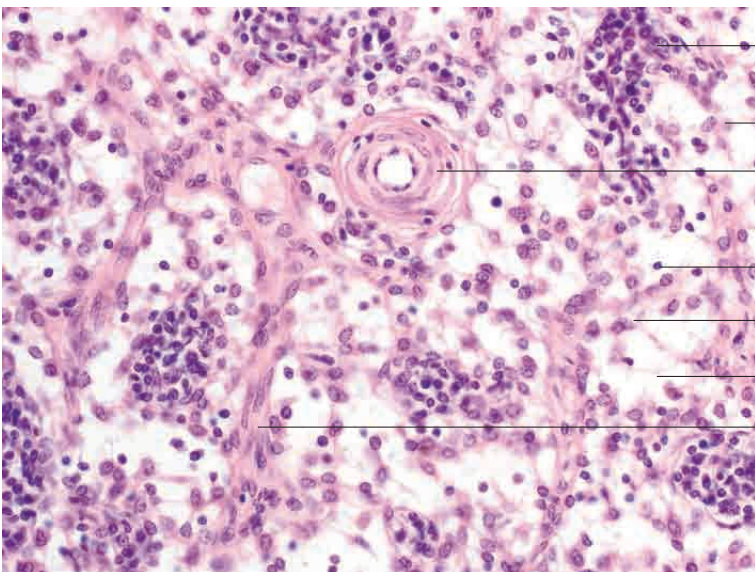
Lymphoreticular connective tissue



- Reticular cells in loose connective tissue
- Supportive framework (trabecula) composed of collagenous connective tissue
- Medullary sinus
- Lymphoreticular tissue with free lymphocytes
- Collagen fibre framework (trabecula)

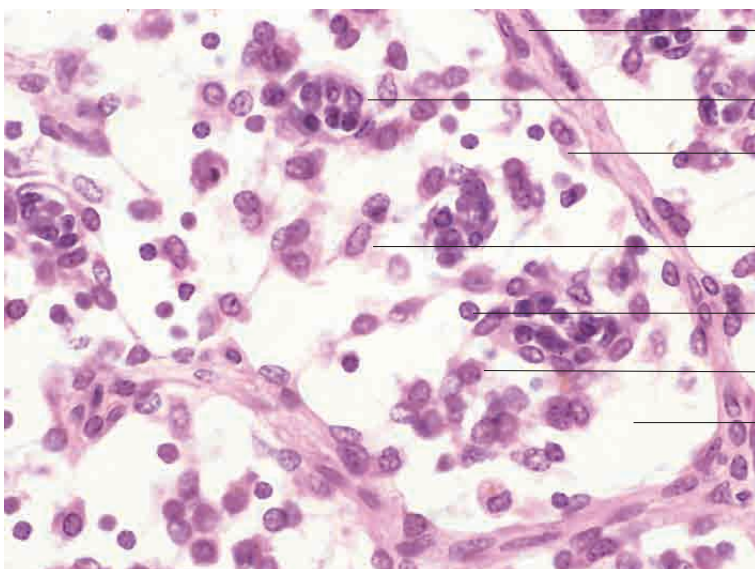
Lymphatic tissue with free lymphocytes, reticular cells and fibrocytes

Lymphoreticular tissue, lymph node, cat. H.E. stain; x180.



- Lymphatic tissue with free lymphocytes, reticular cells and fibrocytes
- Reticular cells
- Arteriole
- Free lymphocyte
- Reticular cells
- Space within reticular meshwork (medullary sinus)
- Collagen fibre framework (trabecula)

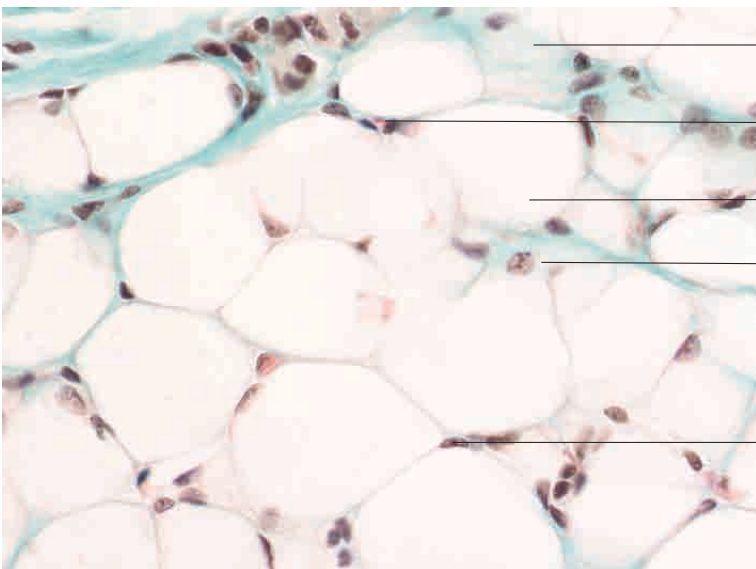
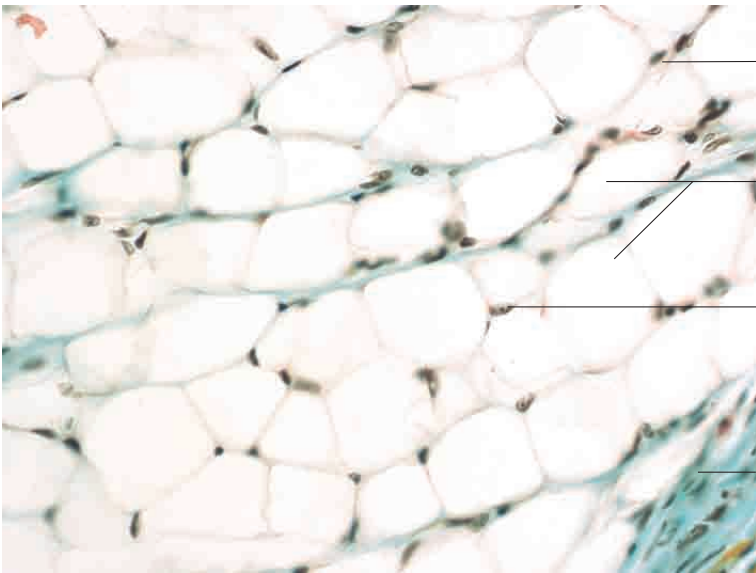
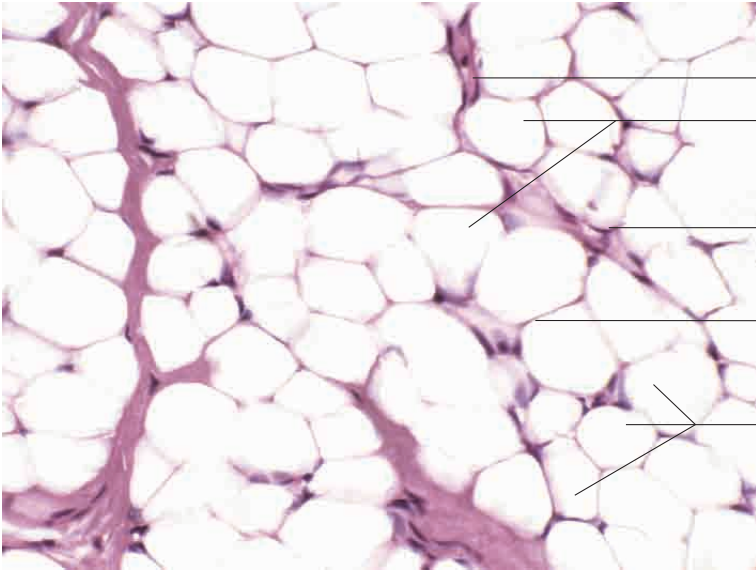
Lymphoreticular tissue, lymph node, goat. H.E. stain; x250.

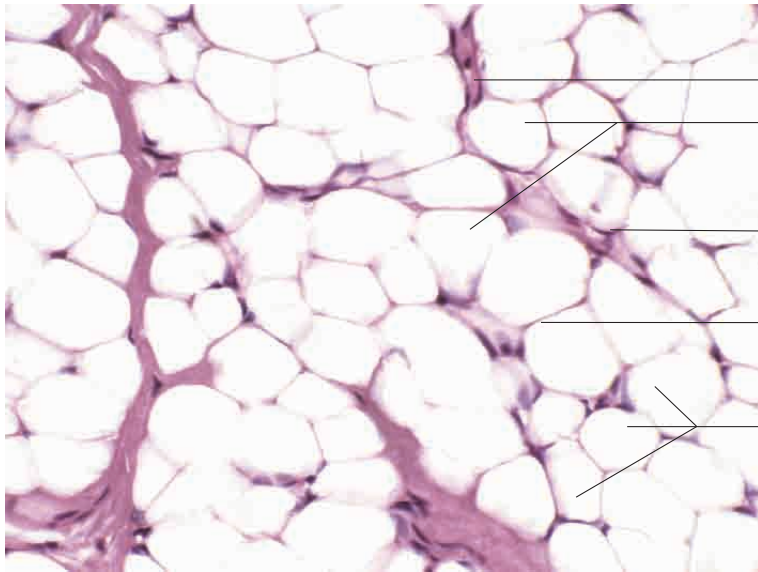


- Supportive framework (trabecula) composed of collagenous connective tissue with fibrocytes
- Lymphatic tissue
- Reticular cell
- Reticular cell
- Free lymphocyte
- Reticular cell
- Space in reticular meshwork (medullary sinus)

Lymphoreticular tissue, lymph node, dog. H.E. stain; x480.

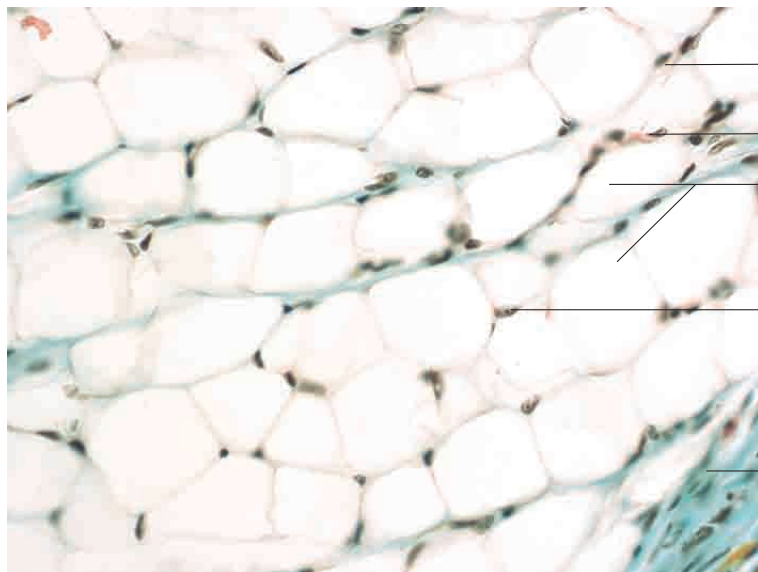
3 Connective and supportive tissues





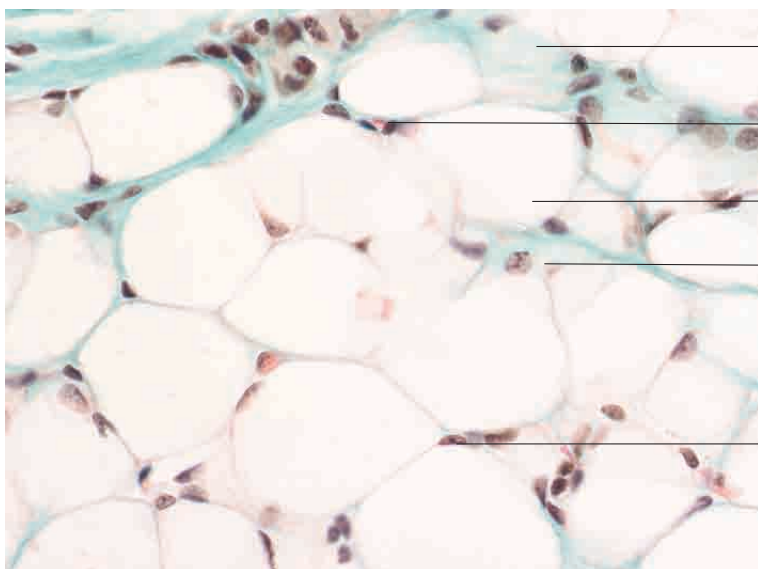
- Collagen fibre bundle with fibrocyte
- Unilocular adipocyte (fat removed by histological processing)
- Peripherally located nucleus of unilocular adipocyte
- Cell boundaries of neighbouring unilocular adipocytes
- Fat cells

Unilocular, white adipose tissue, digital pad, cat. H.E. stain; x300.



- Nucleus of fibrocyte in loose connective tissue
- Capillary
- Unilocular adipocytes
- Flattened, peripherally located nucleus of adipocyte
- Collagen fibre bundle

Unilocular, white adipose tissue, subcutis, dog. Goldner's Masson trichrome stain; x350.

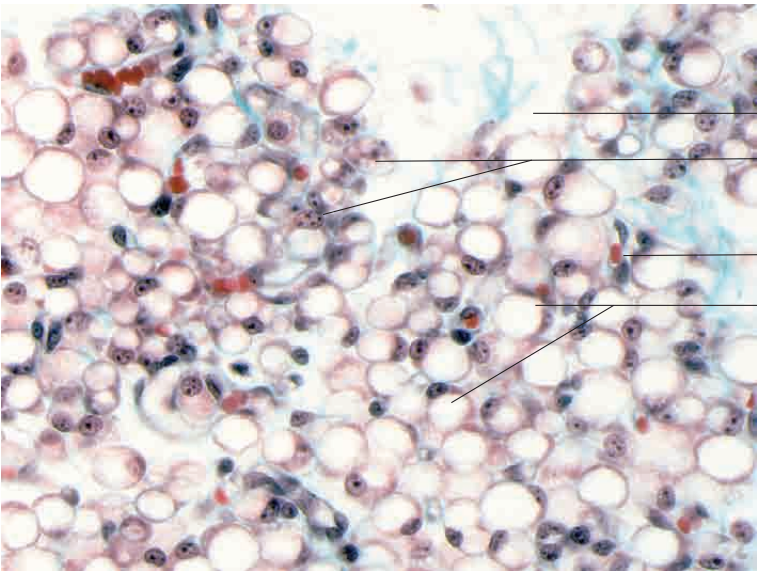
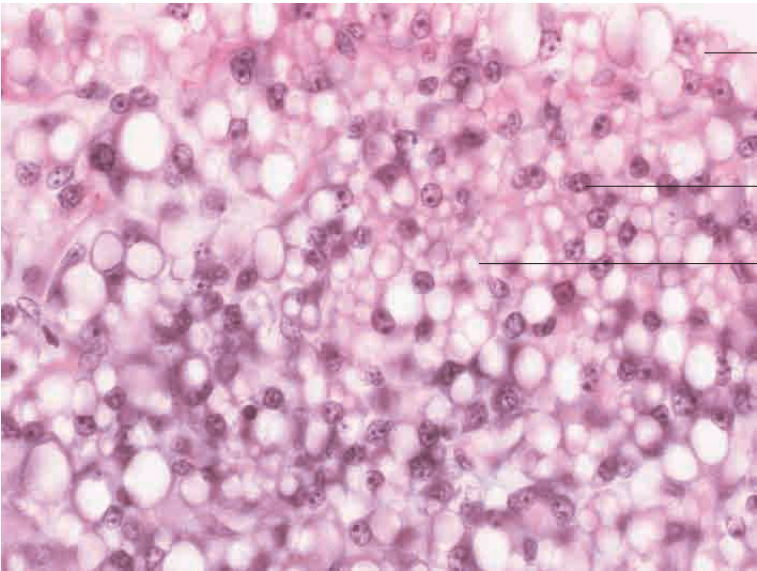
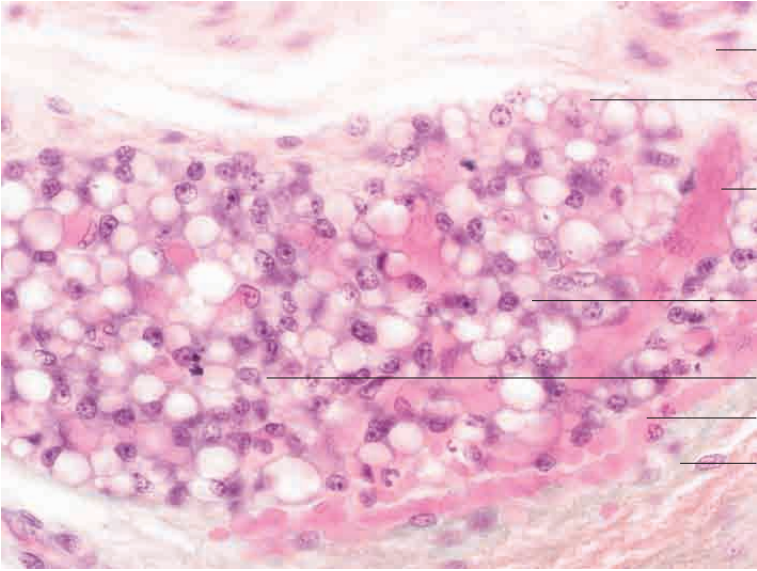


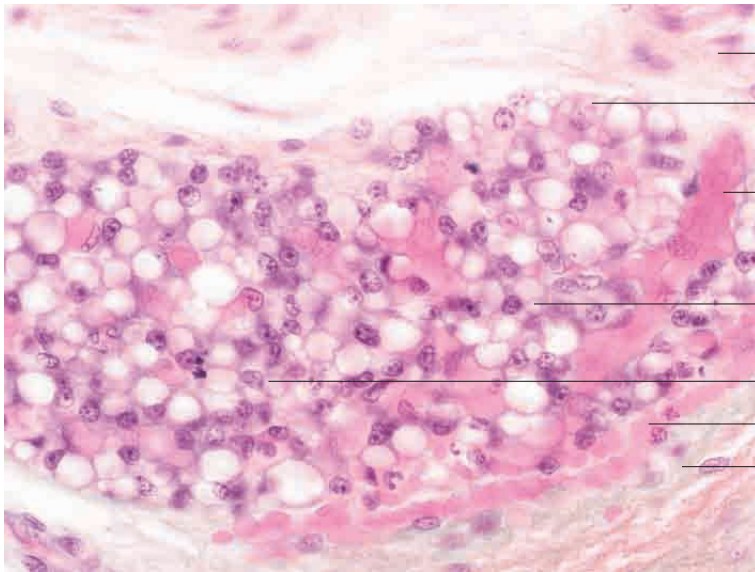
- Fibrocytes and loose connective tissue forming a meshwork around adipocytes
- Capillary with erythrocyte
- Fat free cytoplasmic region of unilocular adipocyte
- Collagen fibre bundle

- Unilocular adipocyte with flattened, peripherally located nucleus

Unilocular, white adipose tissue, subcutis, dog. Goldner's Masson trichrome stain; x480.

3 Connective and supportive tissues





Fibrocyte in loose connective tissue

Multilocular adipocyte

Capillary with erythrocytes

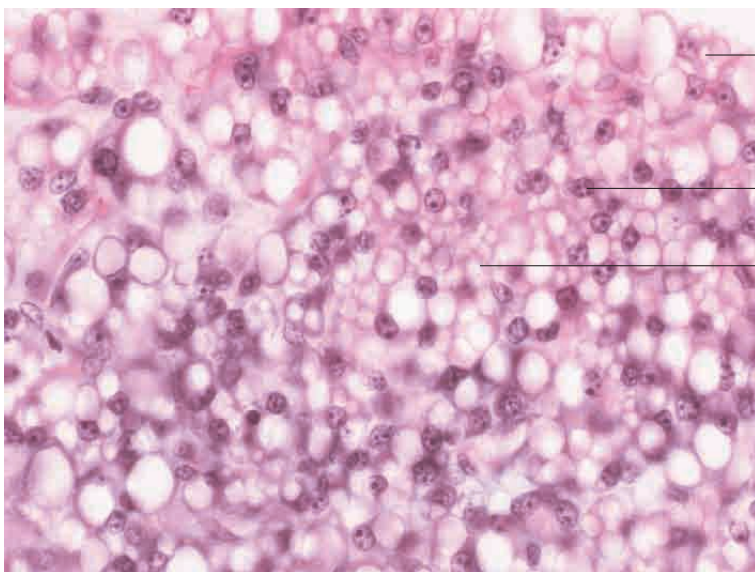
Multilocular adipocyte

Multilocular adipocyte

Capillary with erythrocytes

Loose connective tissue

Multilocular, brown adipose tissue, perirenal fat, young dog. H.E. stain; x300.

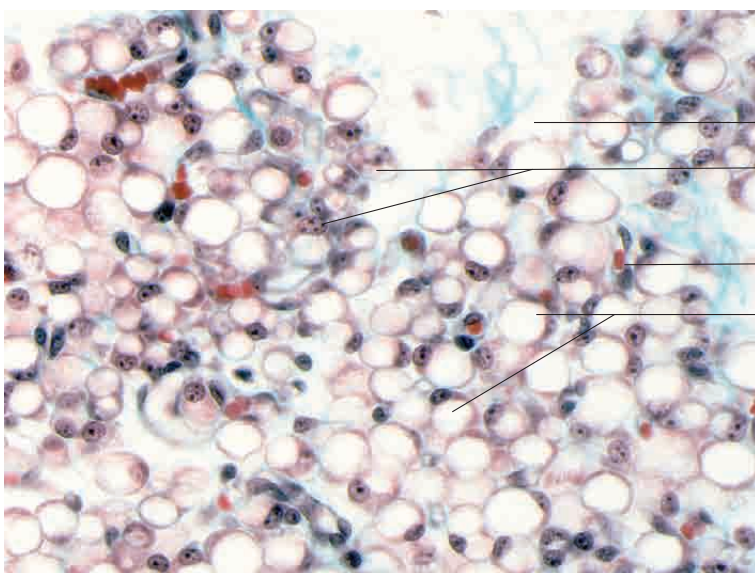


Multilocular adipocytes

Oval to round nucleus of multilocular adipocyte

Partial section of multilocular lipid droplets

Multilocular, brown adipose tissue, perirenal fat, young dog. H.E. stain; x300.



Loose connective tissue

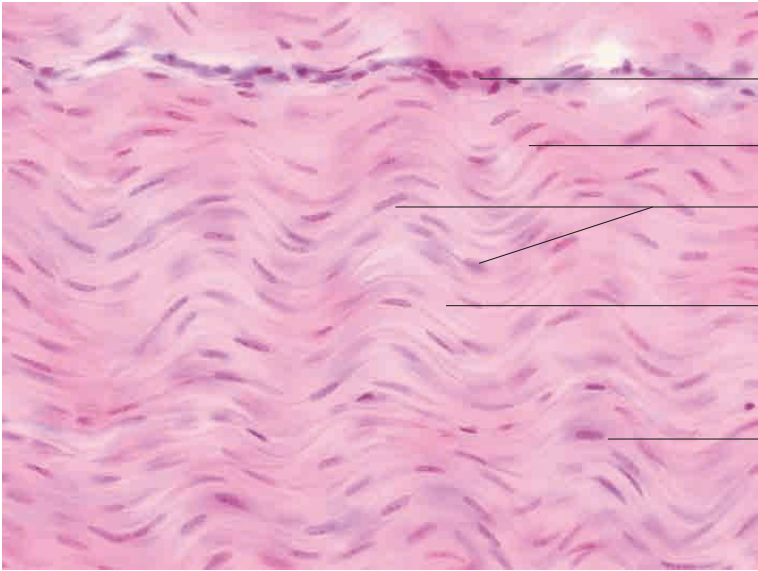
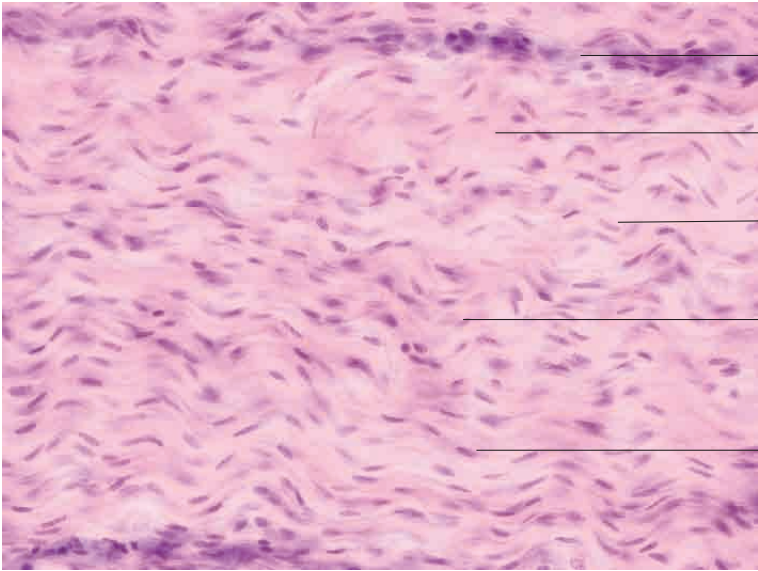
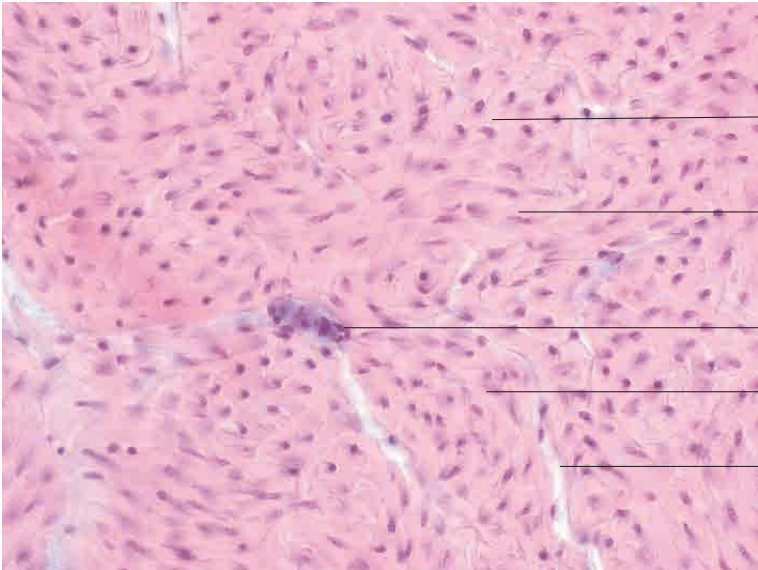
Multilocular adipocytes

Capillary

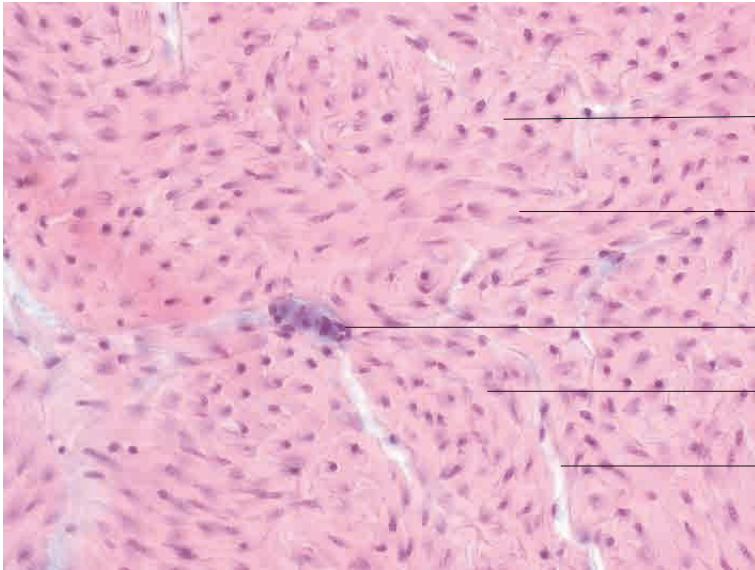
Unilocular adipocytes with flattened, peripherally located nuclei

Uni- and multilocular adipose tissue, outer wall of urinary bladder, young cat. Goldner's Masson trichrome stain; x300.

3 Connective and supportive tissues



Fibrous connective tissue



Collagen fibres bundle in tendon (oblique sections)

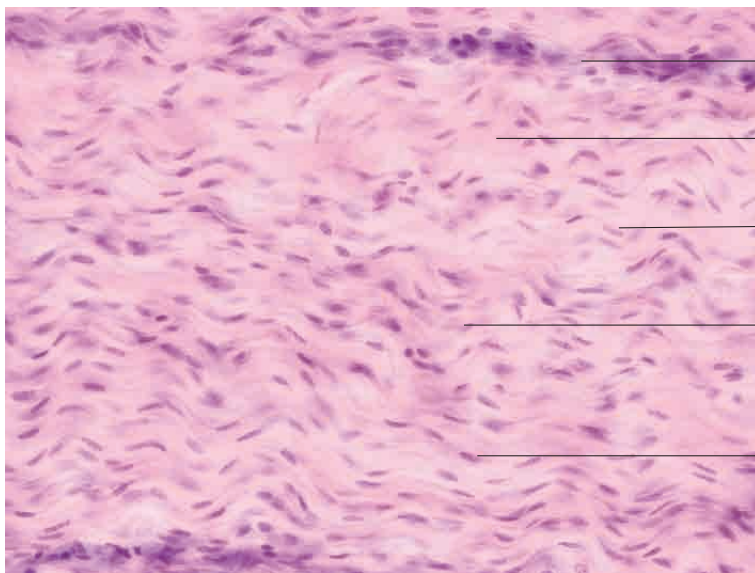
Collagen fibre bundles in tendon (oblique and longitudinal sections)

Peritendineum with fibrocyte

Collagen fibre bundles in tendon (oblique and longitudinal sections)

Peritendineum

Dense regular connective tissue, tendon, pig.
H.E. stain; x250.



Peritendineum

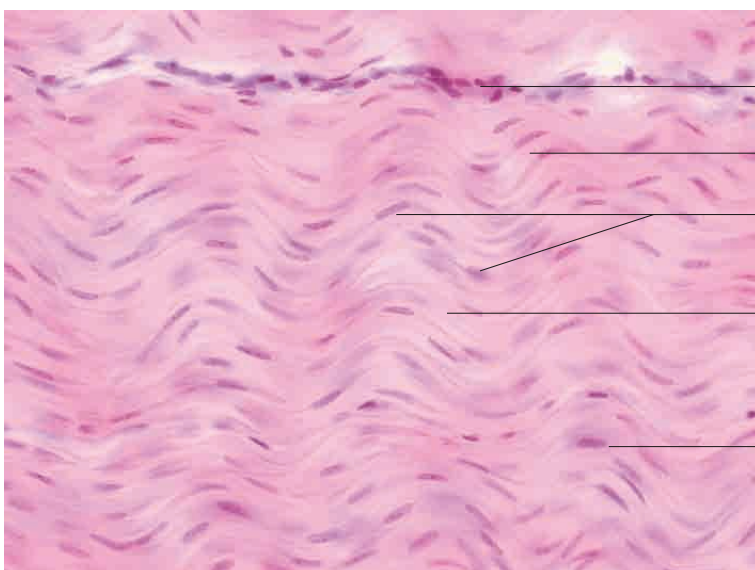
Dense regular connective tissue (tendon)
with wave-like orientation of collagen fibrils
(longitudinal section)

Nucleus of tendinocyte

Dense regular connective tissue (tendon)
with wave-like orientation of collagen fibrils
(longitudinal section)

Nucleus of tendinocyte

Dense regular connective tissue, tendon (longitudinal
section), pig. H.E. stain; x250.



Peritendineum

Dense regular connective tissue (tendon) with wave-like
orientation of collagen fibrils (longitudinal section)

Nuclei in longitudinal section, aligned with fibre direction

Dense regular connective tissue (tendon)

Nucleus in longitudinal section, aligned with
fibre direction

Dense regular connective tissue, tendon (longitudinal
section), pig. H.E. stain; x300.