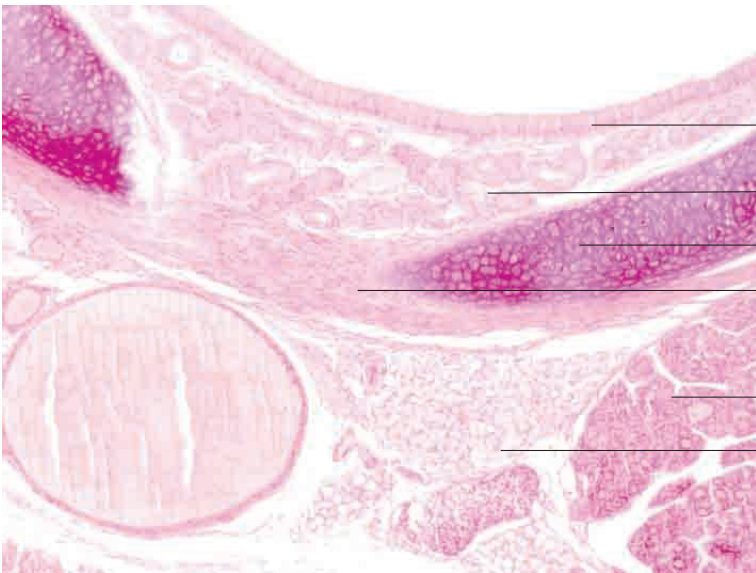
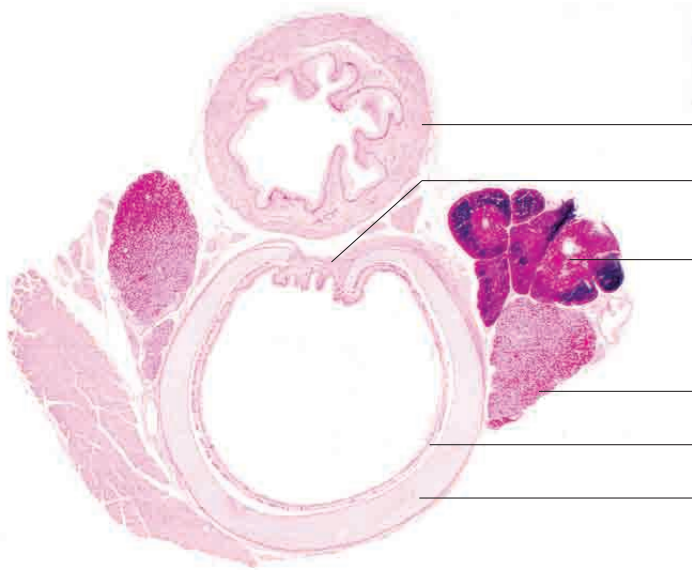


11 Respiratory system





- Oesophagus
- M. trachealis
- Thymus
- Thyroid gland
- Respiratory mucosa
- Tracheal ring

Trachea, young cat. H.E. stain; x25.



- Pseudostratified columnar respiratory epithelium with goblet cells
- Acinar, serous glands (tracheal glands)
- Hyaline tracheal ring
- Fibroelastic annular ligament
- Thyroid gland
- Multilocular (brown) adipose tissue

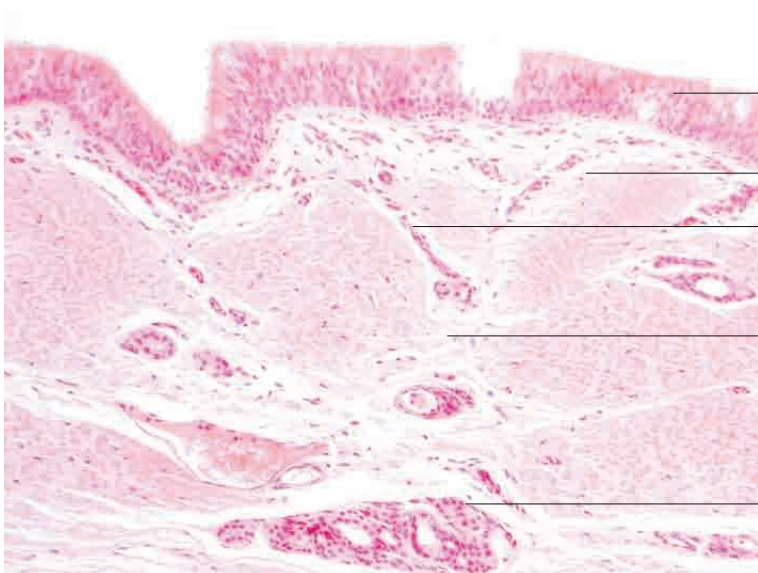
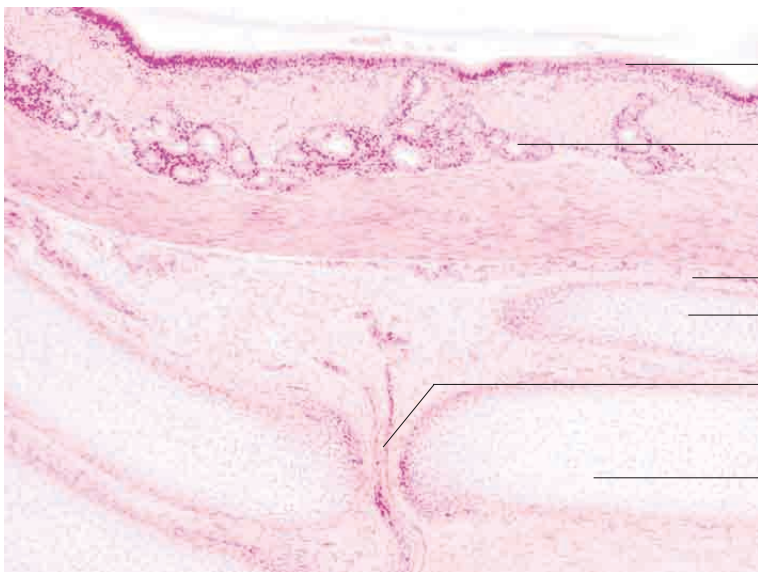
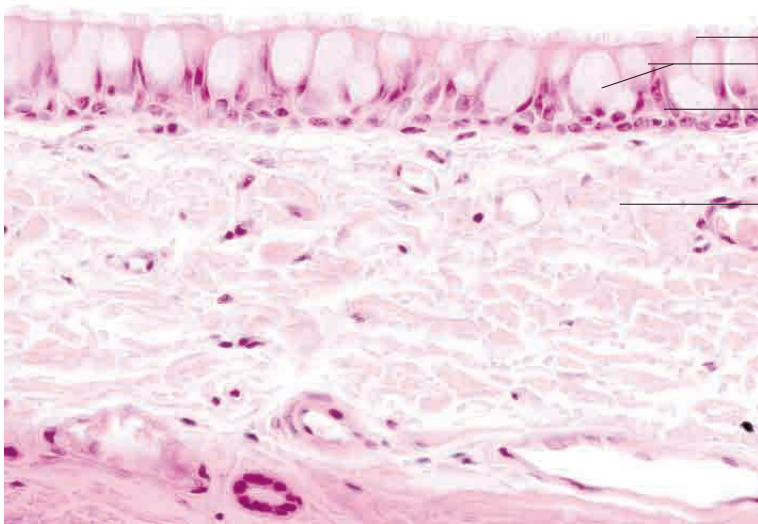
Trachea, young dog. H.E. stain; x100.

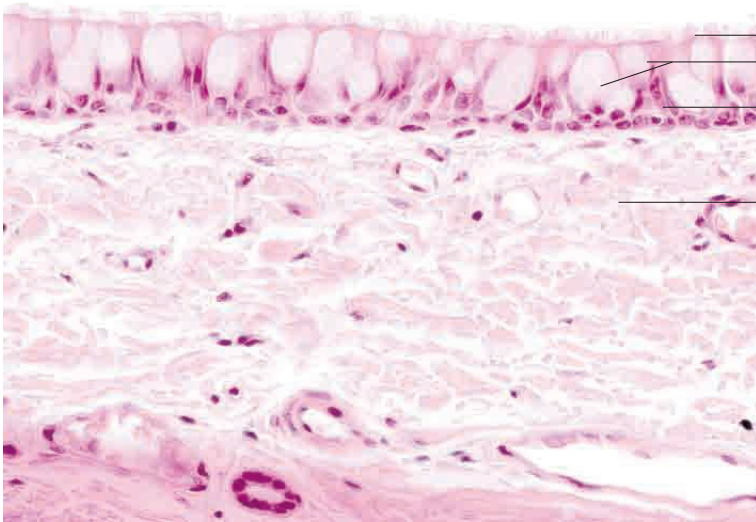


- Pseudostratified columnar respiratory epithelium with goblet cells
- Lamina propria mucosae
- Secretory duct (partial section)
- Tela submucosa
- Acinar, serous glands (tracheal glands)
- Perichondrium of tracheal cartilage

Tracheal mucosa, dog. H.E. stain; x200.

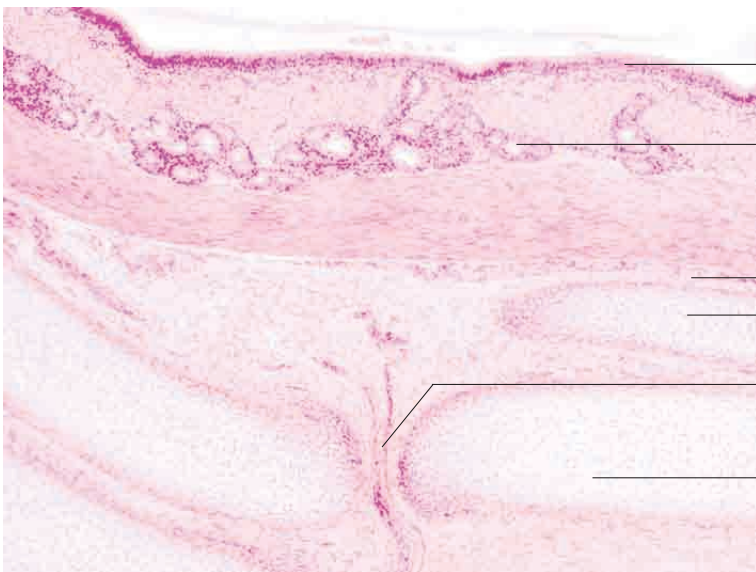
11 Respiratory system





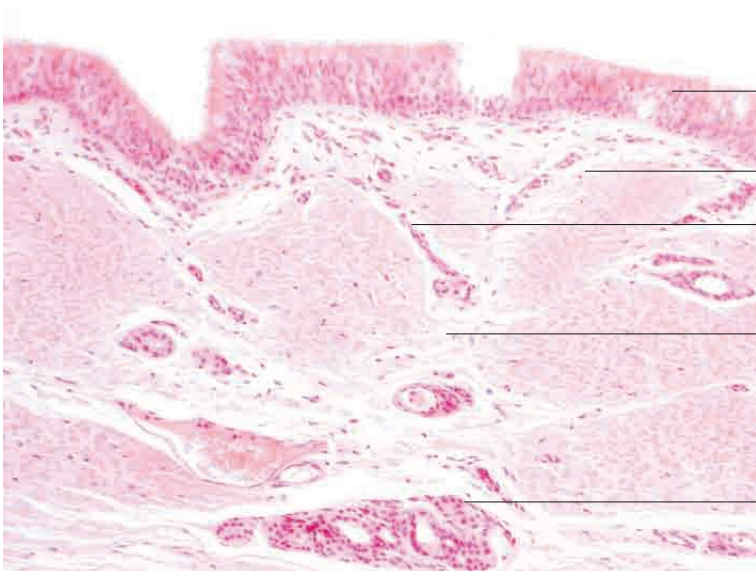
- Cilia
- Goblet cells
- Pseudostratified columnar epithelium
- Lamina propria mucosae

Trachea, respiratory epithelium, young dog. H.E. stain; x40.



- Pseudostratified columnar respiratory epithelium with goblet cells
- Acinar, serous glands (tracheal glands)
- Perichondrium
- Hyaline tracheal ring
- Fibroelastic annular ligament
- Hyaline tracheal ring

Trachea, pig. H.E. stain; x100.



- Pseudostratified columnar respiratory epithelium with goblet cells
- Lamina propria mucosae
- Secretory duct (partial section)
- Tela submucosa
- Acinar, serous glands (tracheal glands)

Tracheal mucosa, horse. H.E. stain; x200.