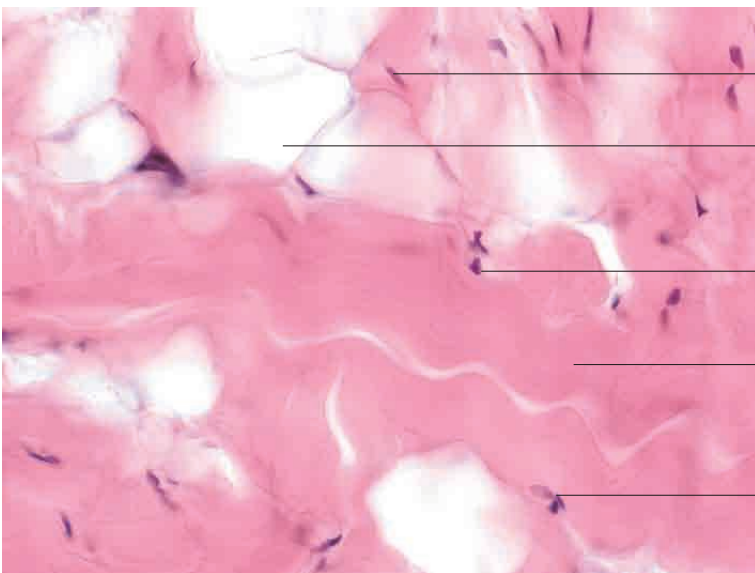
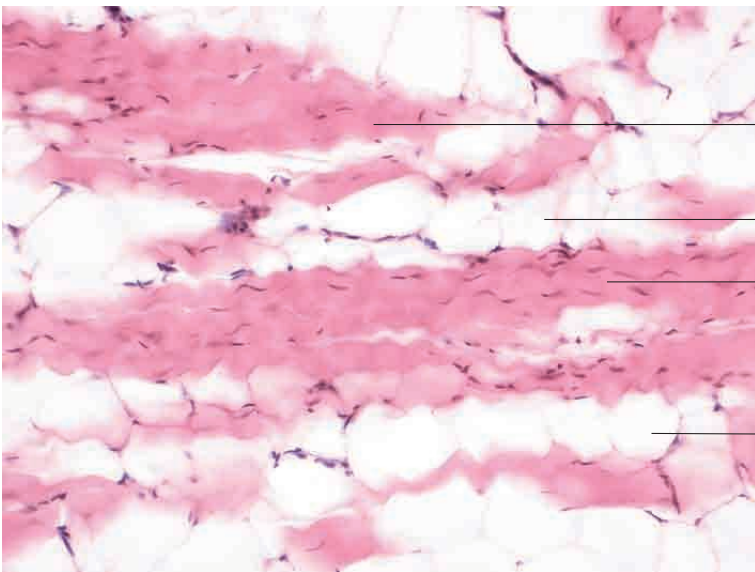
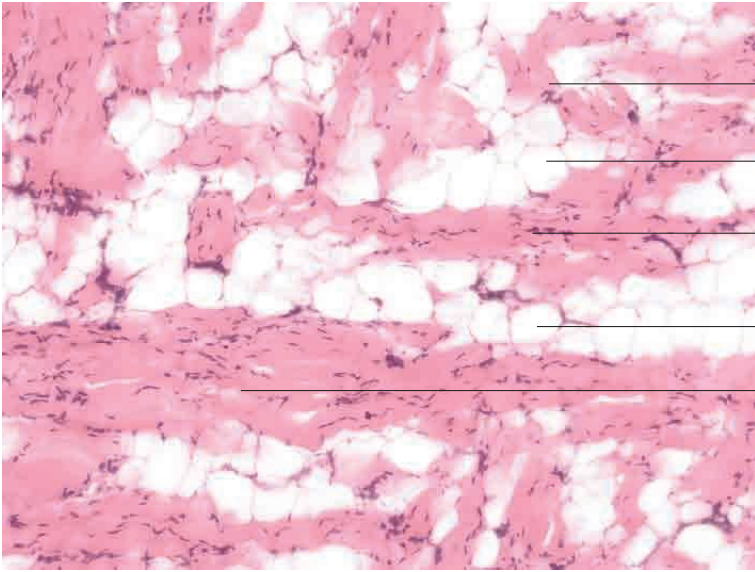
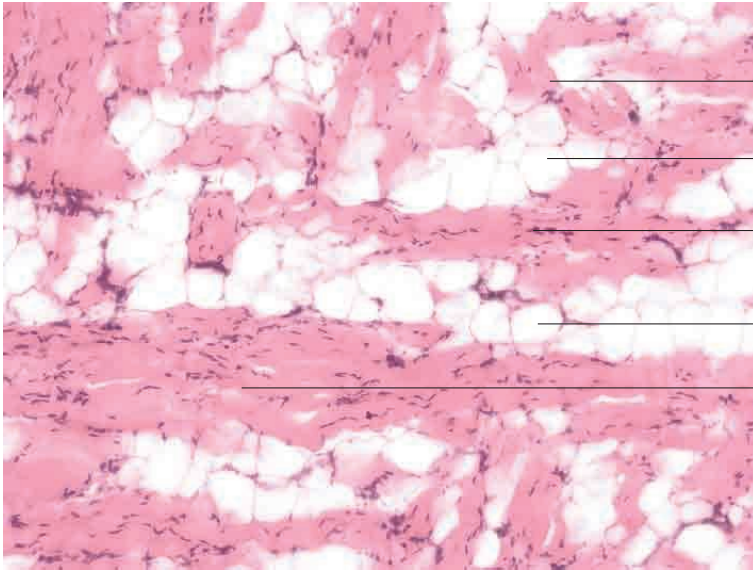


3 Connective and supportive tissue





Collagen fibre bundle, oblique section

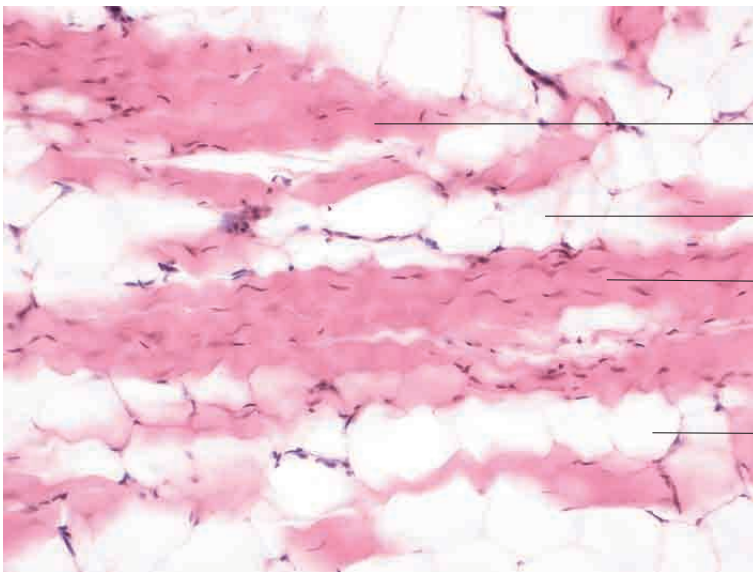
Unilocular, white adipose tissue

Dense regular connective tissue with nuclei of tendinocytes in longitudinal section

Unilocular, white adipose tissue

Dense regular connective tissue with nuclei of tendinocytes in longitudinal section

Collagen fibres, subcutis, dog.
H.E. stain; x120.



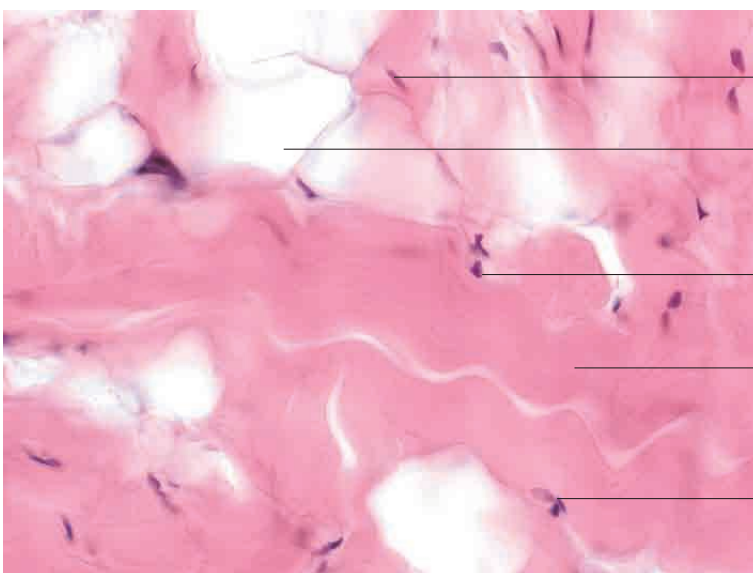
Collagen fibre bundles, oblique section

Unilocular, white adipose tissue

Dense regular connective tissue with nuclei of tendinocytes in longitudinal section

Unilocular, white adipose tissue

Collagen fibres, subcutis, dog.
H.E. stain; x250.



Nucleus of tendinocyte

Unilocular adipocyte

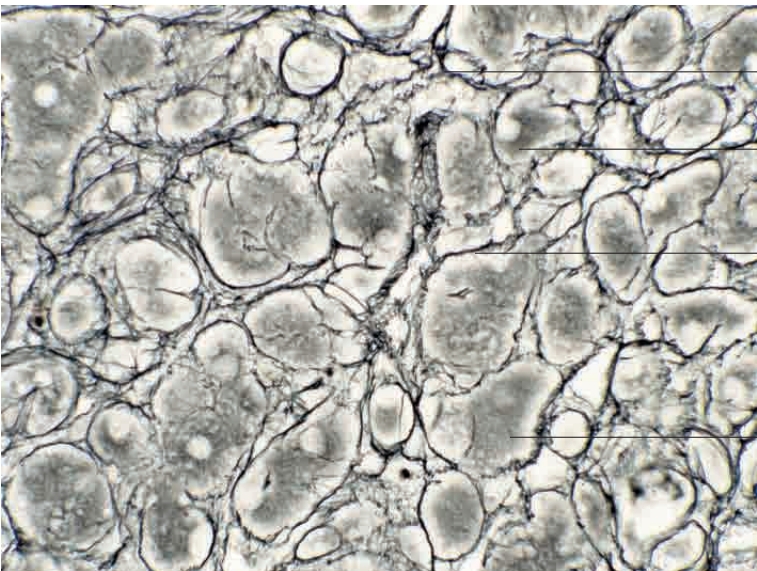
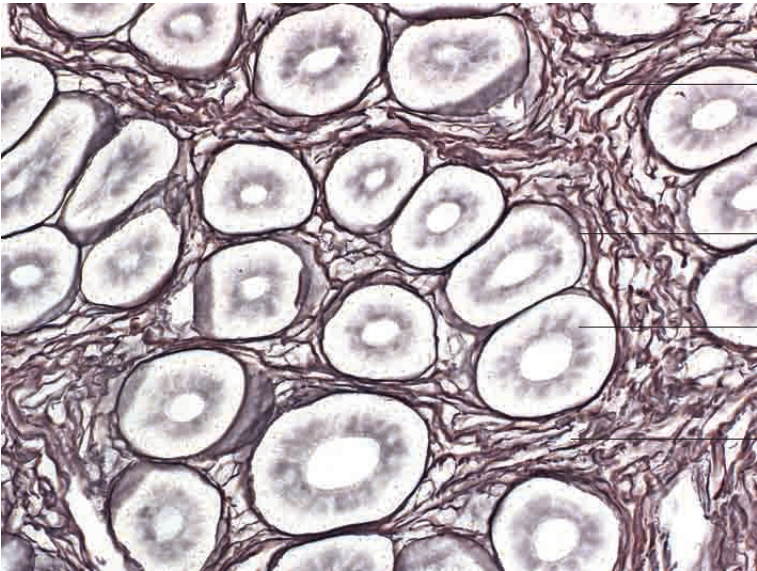
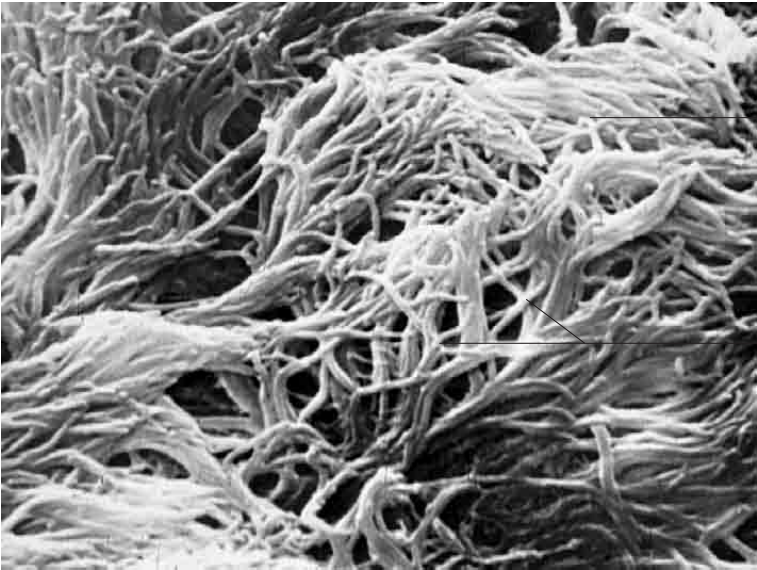
Nucleus of tendinocyte

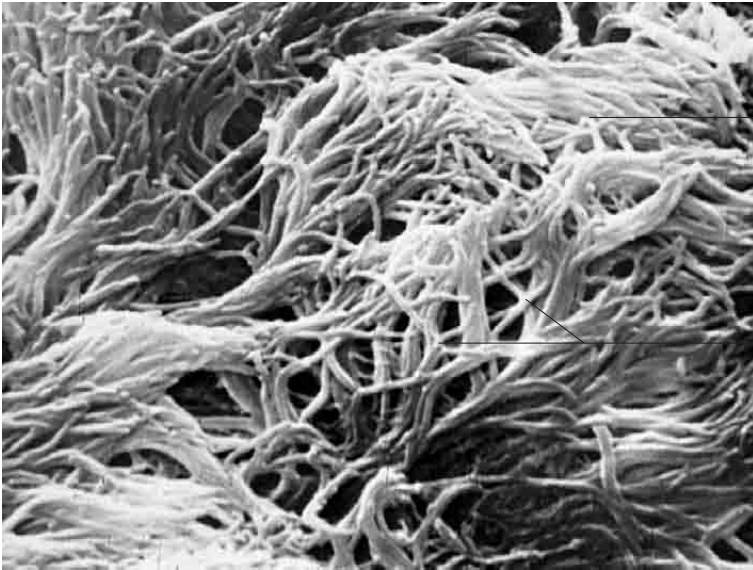
Dense regular connective tissue

Nucleus of tendinocyte

Collagen fibres, subcutis, dog.
H.E. stain; x400.

3 Connective and supportive tissue

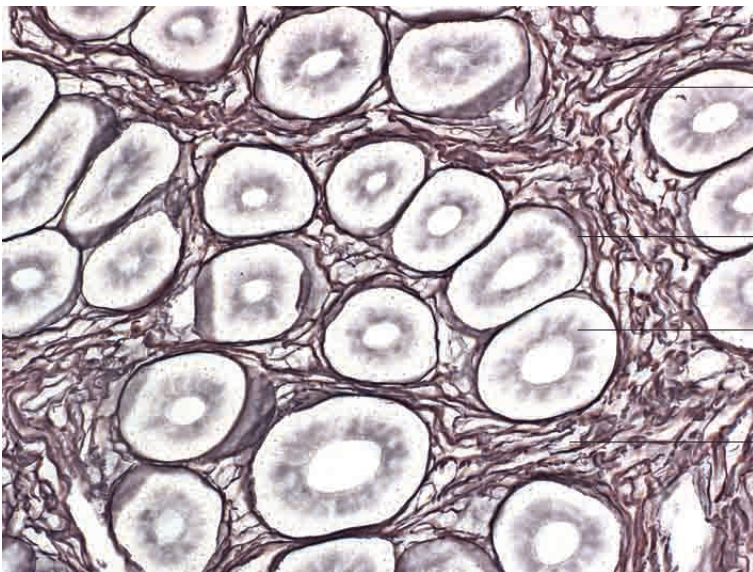




Surface view of reticular fibre network

Branching of reticular fibres

Reticular fibres, foetal rumen, ox; x100.



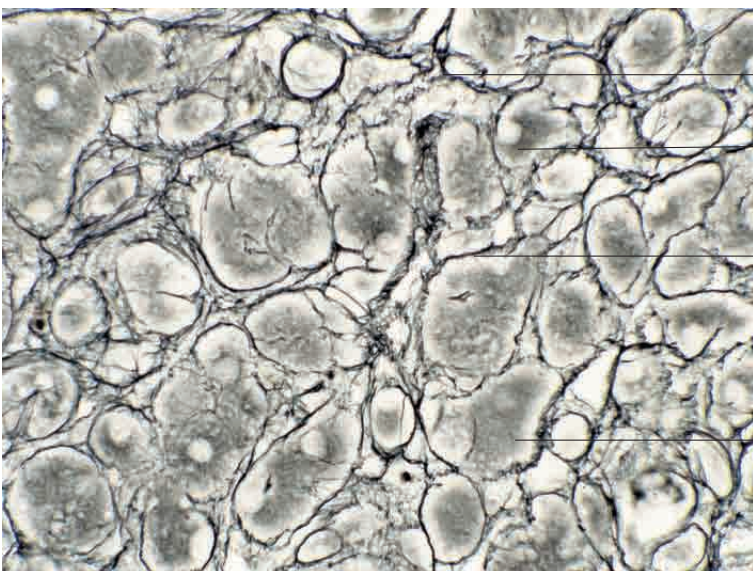
Dense reticular fibre network between adjacent tubular glands (cross section)

Peritubular reticular fibre network

Tubular gland (cross section)

Dense reticular fibre network between adjacent tubular glands (cross section)

Reticular fibres, large intestine, cat. Achucarro method; x400.



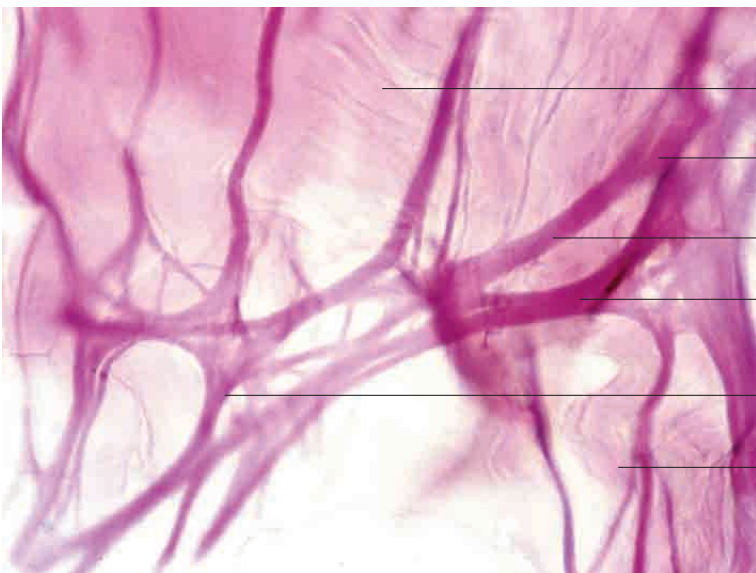
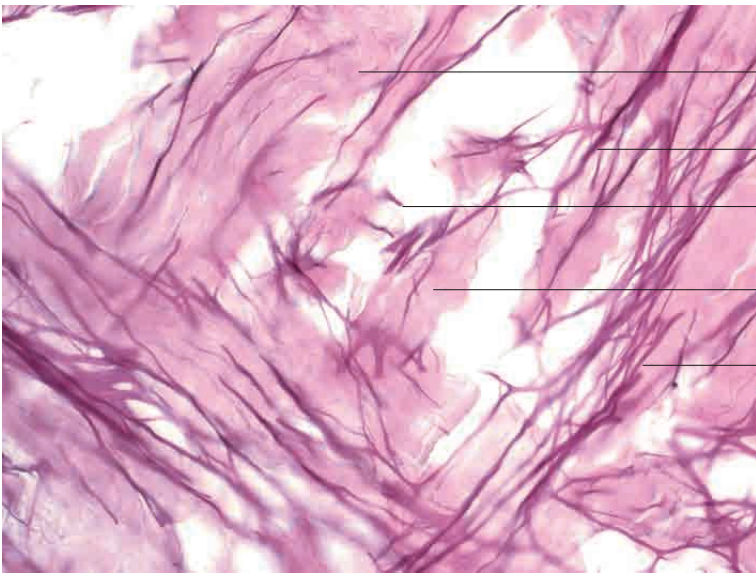
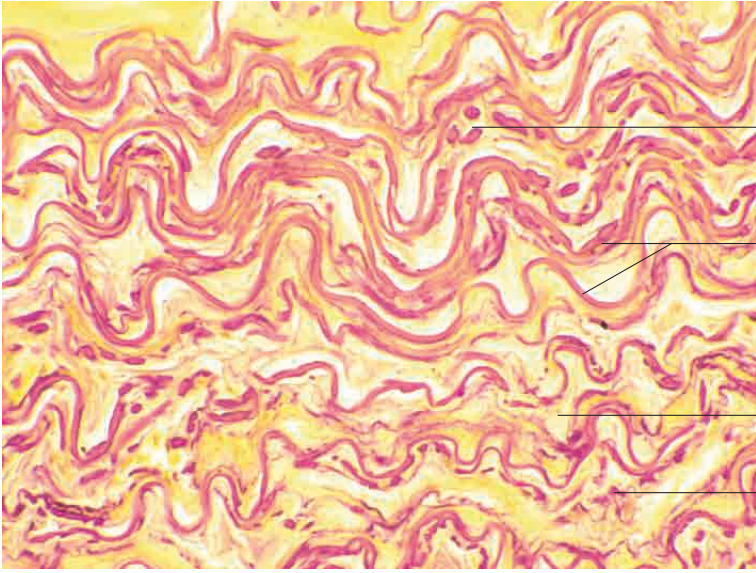
Loose reticular fibre network

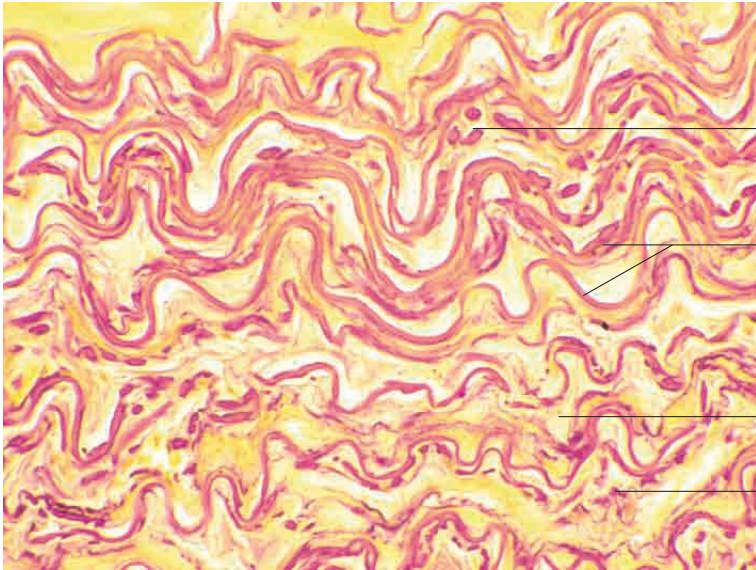
Loose reticular fibre network

Cytoplasm of parenchymal cell

Reticular fibres, ovary, cat, Achucarro method; x480.

3 Connective and supportive tissues





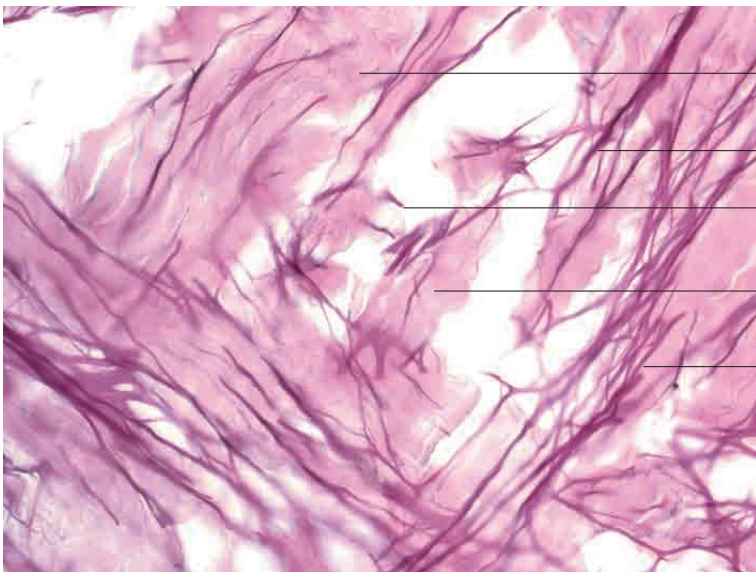
Elastic fibres (cross section)

Elastic fibres (longitudinal section)

Loose connective tissue

Elastic fibres (cross section)

Elastic fibres, nuchal ligament, ox. Van Gieson stain; x120.



Collagen fibres

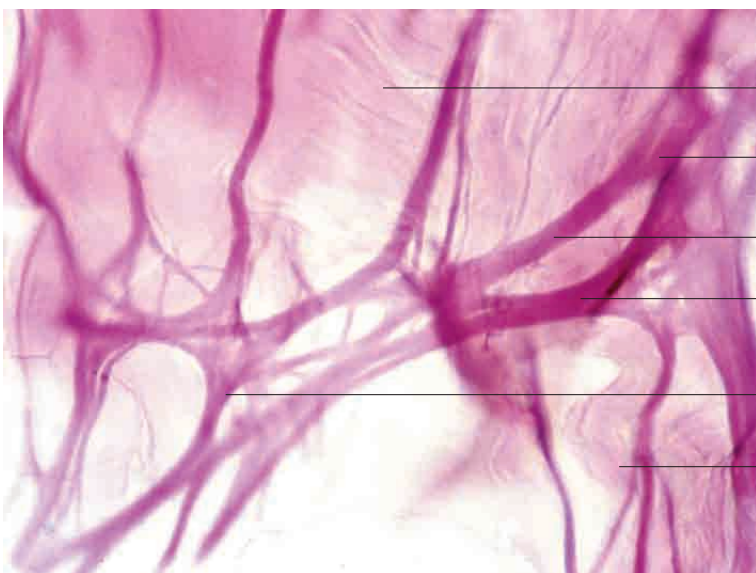
Elastic fibre bundle (longitudinal section)

Individual elastic fibre (cross section)

Collagen fibres

Elastic fibre bundle (longitudinal section)

Elastic fibres, skin, cat. Resorcin-fuchsin stain; x350.



Collagen fibres (longitudinal section)

Branching elastic fibres (longitudinal section)

Individual elastic fibre (longitudinal section)

Branching elastic fibres (longitudinal section)

Branching elastic fibres (longitudinal section)

Collagen fibres (longitudinal section)

Elastic fibres, skin, dog. Resorcin-fuchsin stain; x480.