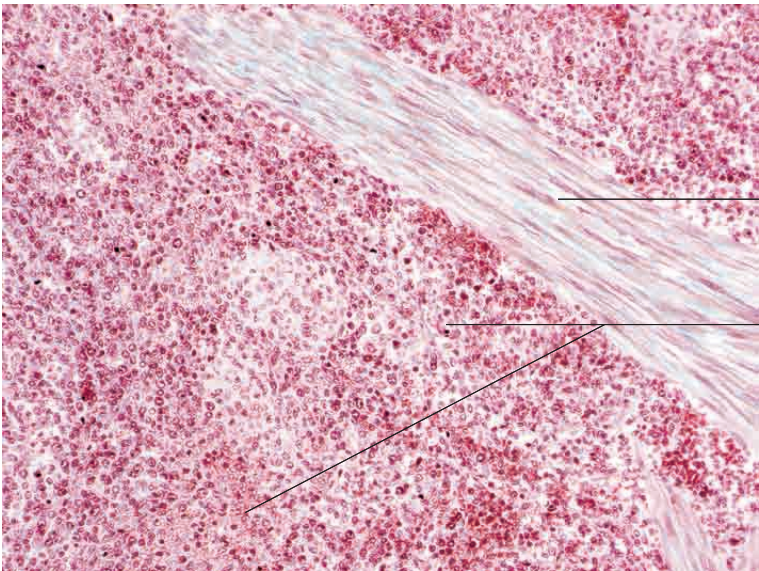
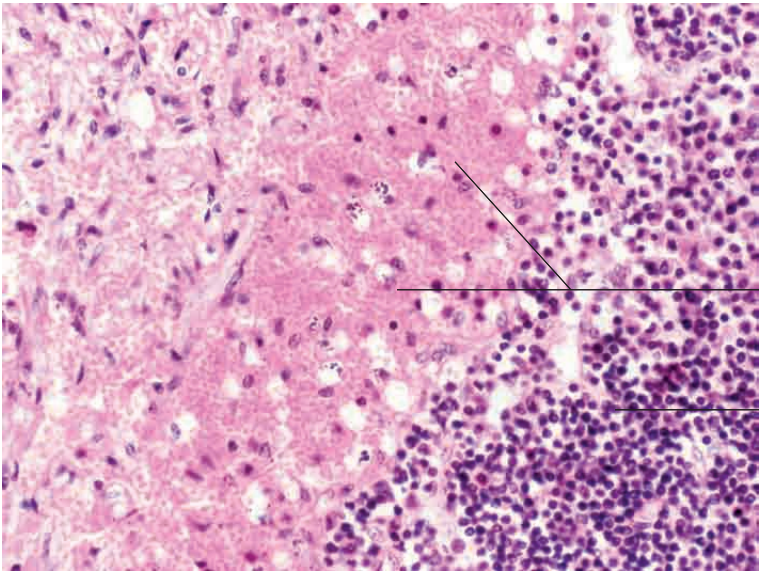
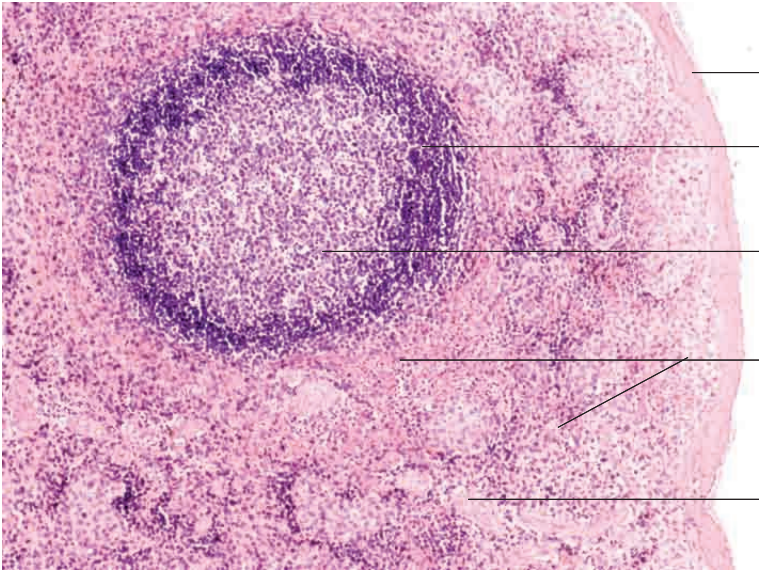
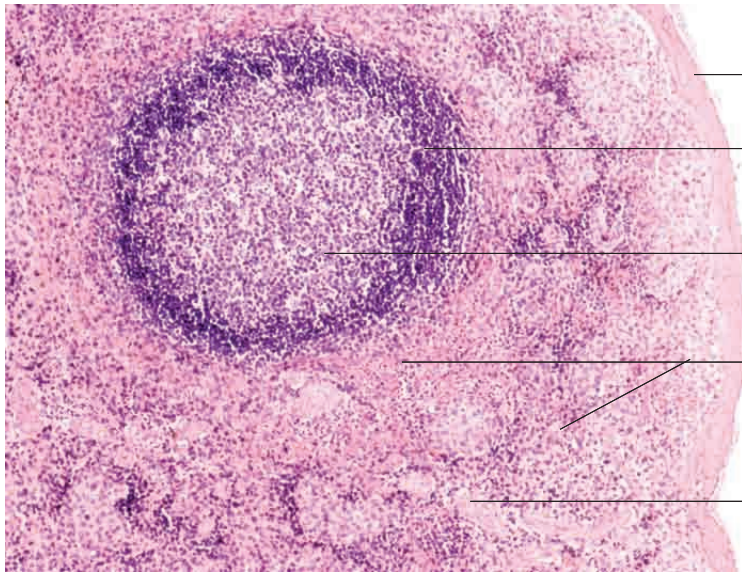


8 Lymphatic organs

---





Capsule with outer serosal lining

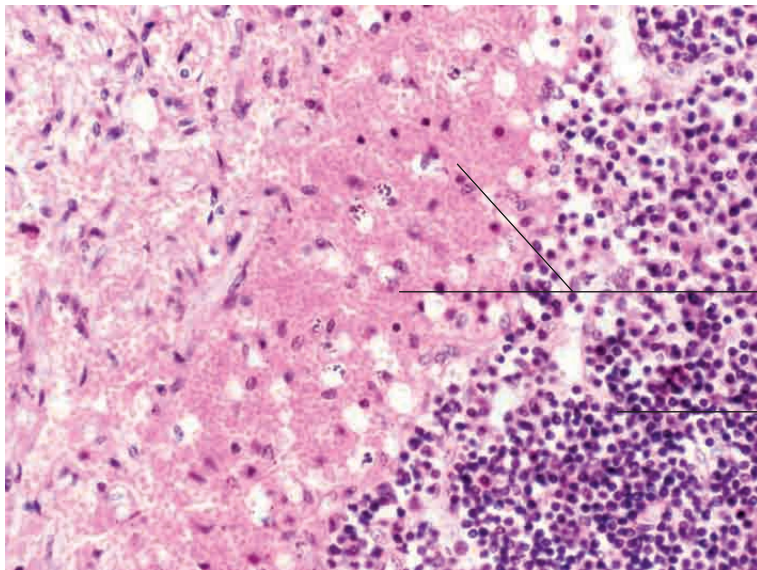
White pulp (follicle)

Immunologically active follicular reaction centre

Red pulp (sinusoid)

Connective tissue trabecula

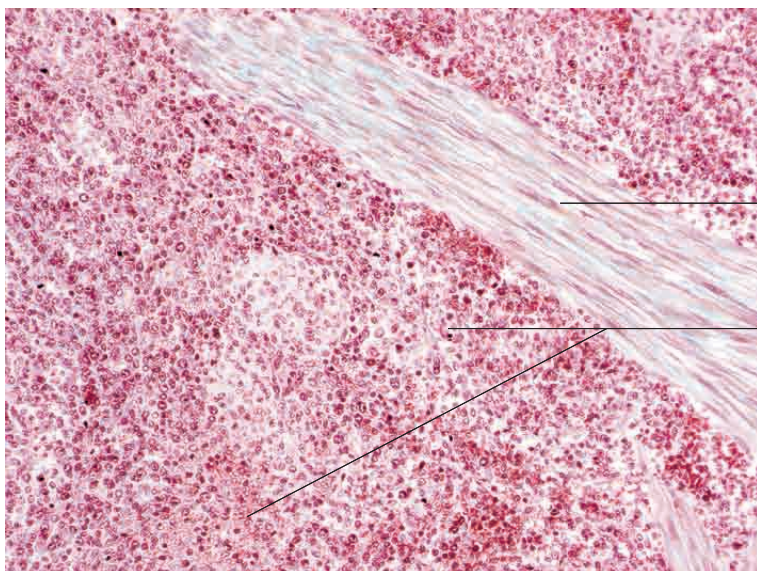
Spleen, cat. H.E. stain; x100.



Red pulp with expanded vascular spaces (sinusoids) with erythrocytes, reticular cells and macrophages

White pulp

Spleen, cat. H.E. stain; x320.



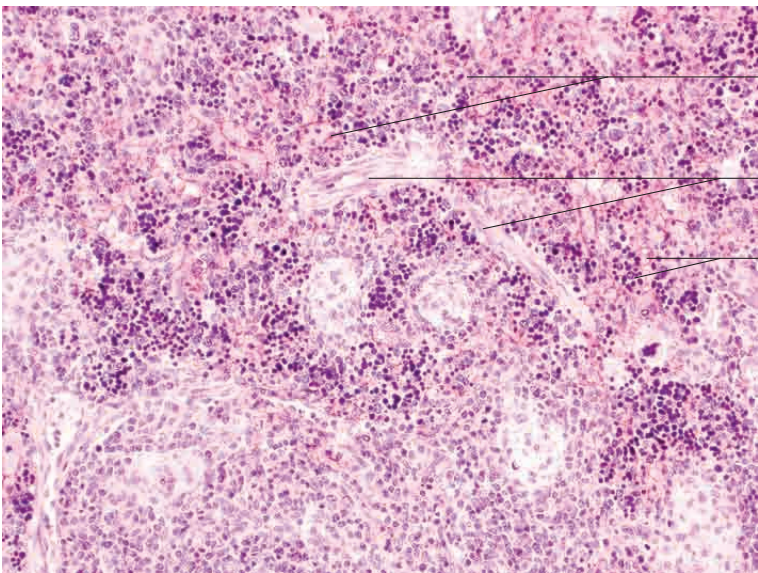
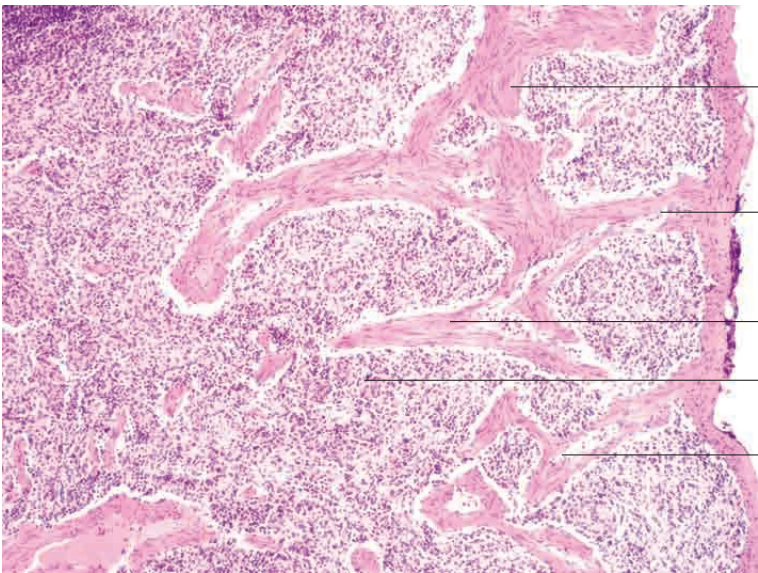
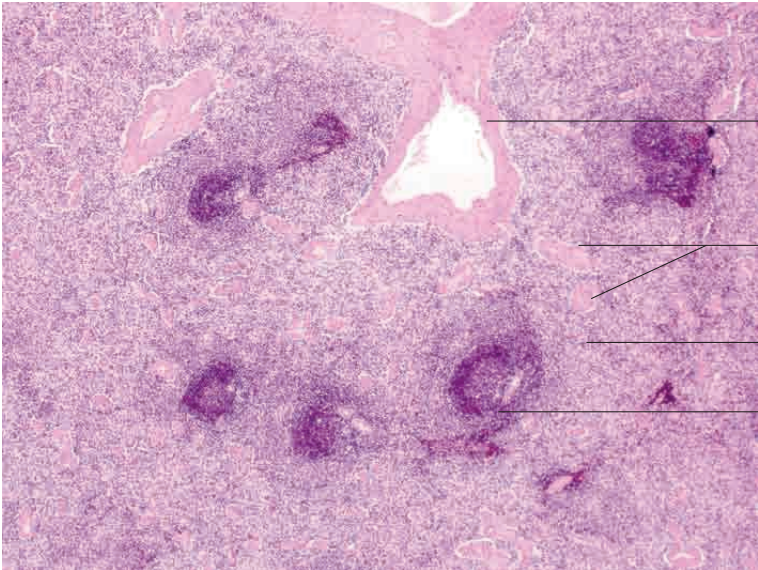
Connective tissue trabecula with smooth muscle cells

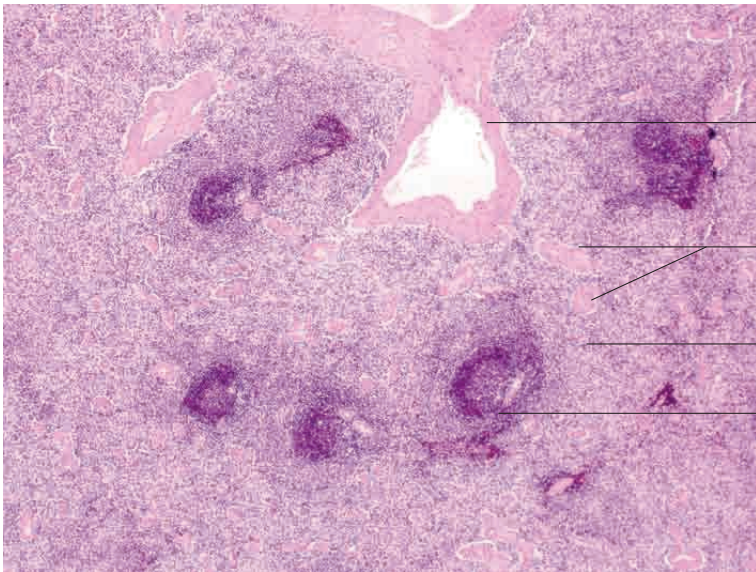
Red pulp with expanded vascular spaces (sinusoids) with erythrocytes, reticular cells and macrophages

Spleen, pig. Goldner's Masson trichrome stain; x200.

8 Lymphatic organs

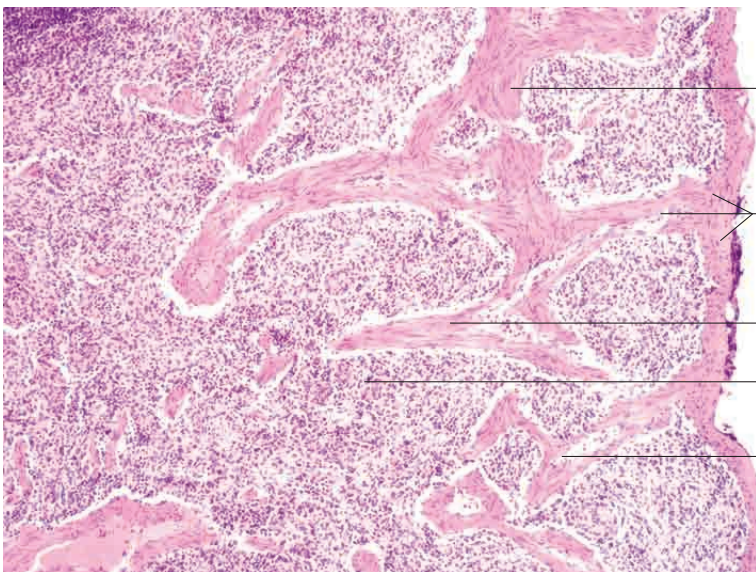
---





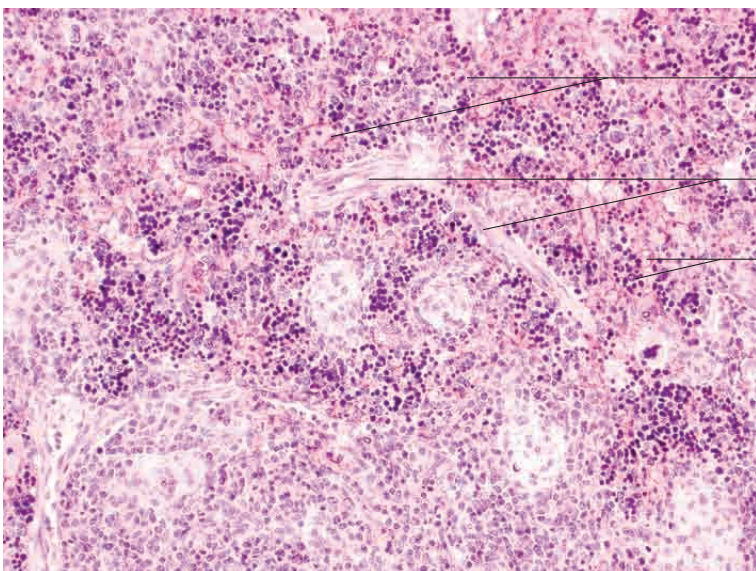
- Capsule near hilus
- Connective tissue trabecula with blood vessels
- Red pulp
- White pulp

Spleen, dog. H.E. stain; x40.



- Loose connective tissue trabecula containing elastic fibres and smooth muscle cells
- Capsule composed of tunica serosa and underlying tela subserosa
- Connective tissue trabecula (partial oblique section)
- Red pulp
- Connective tissue trabecula (partial oblique section)

Spleen, dog. H.E. stain; x100.

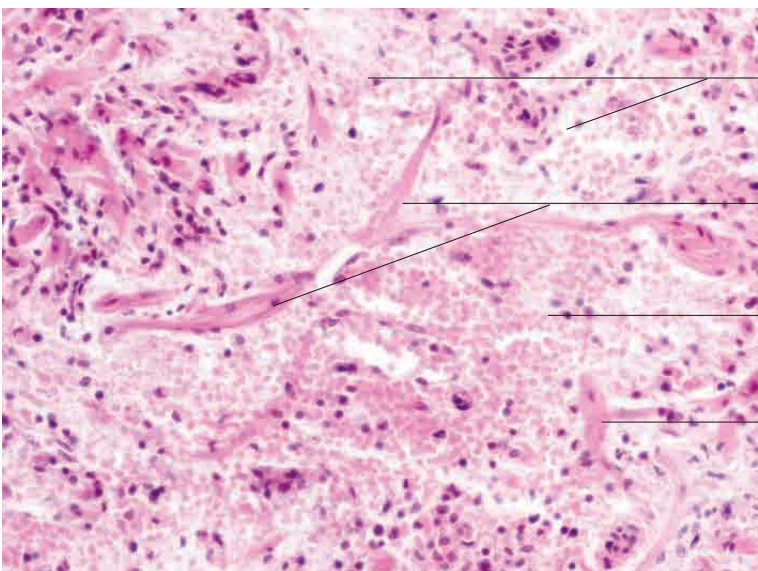
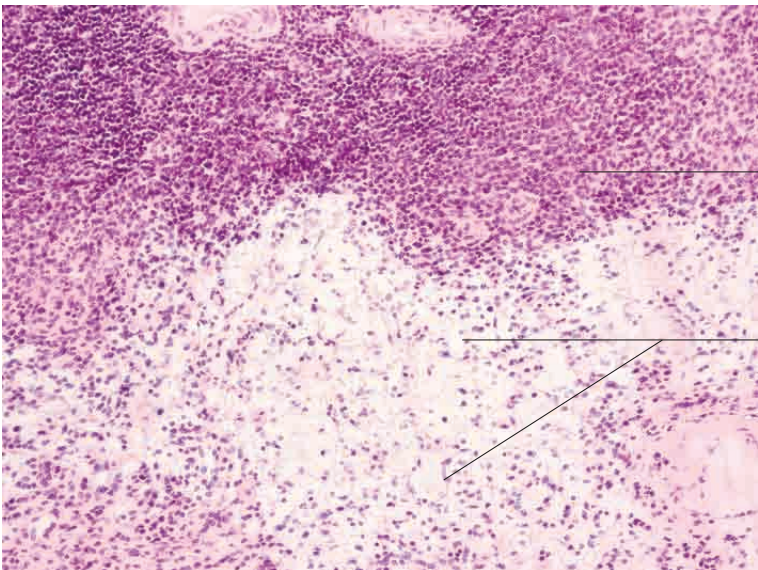
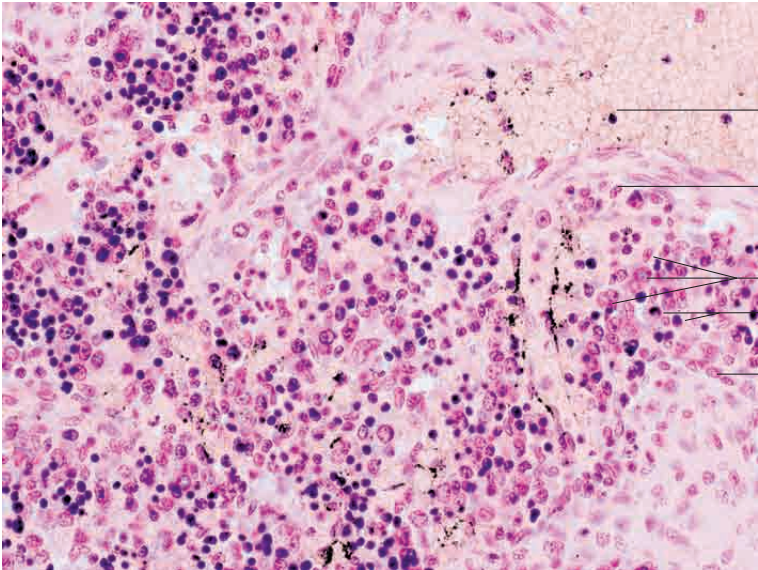


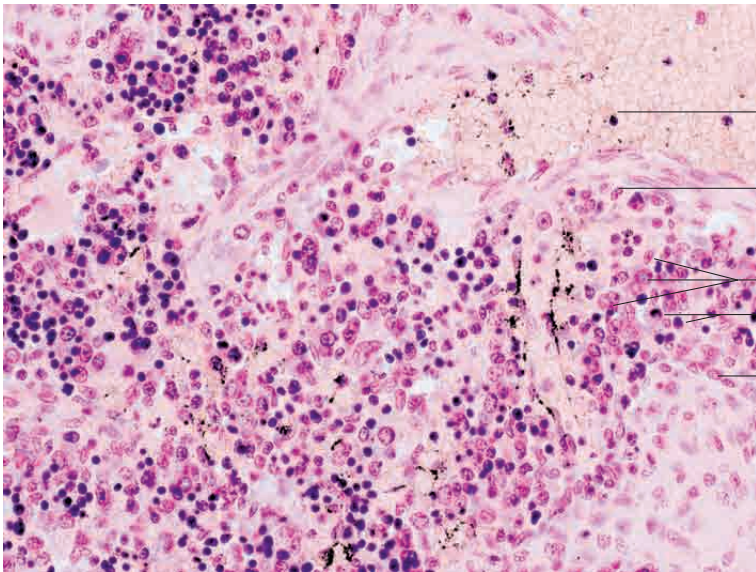
- Red pulp
- Connective tissue trabecula containing vessels and smooth muscle cells
- Red pulp with erythrocytes, lymphoid cells, reticular cells and macrophages

Spleen, dog. H.E. stain; x200.

8 Lymphatic organs

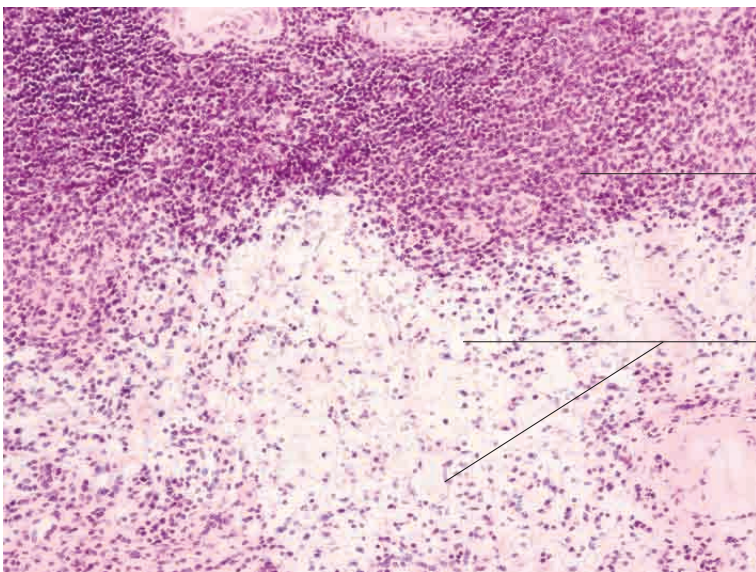
---





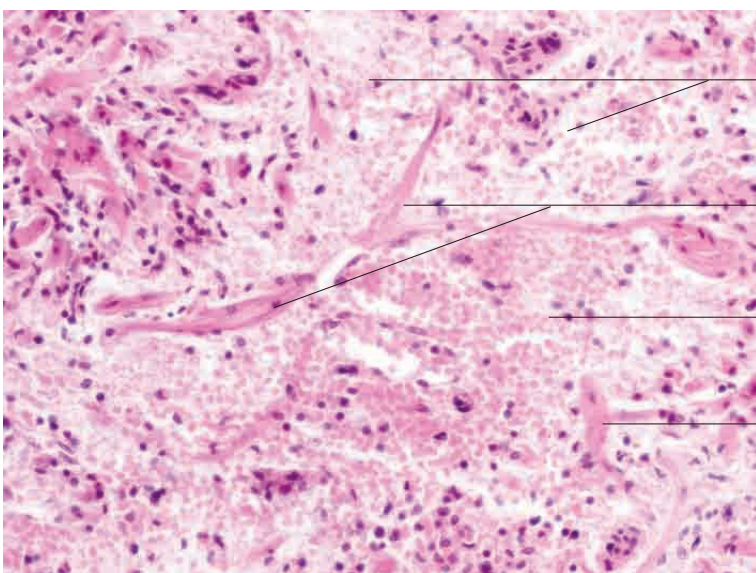
- Erythrocytes in red pulp
- Connective tissue trabecula containing vessels and smooth muscle cells
- Reticular cells
- Granulocytes
- Reticular cells lining splenic sinus

Spleen, dog. H.E. stain; x400.



- White pulp
- Sinus in red pulp containing little blood; reticular cells and fibrocytes are present

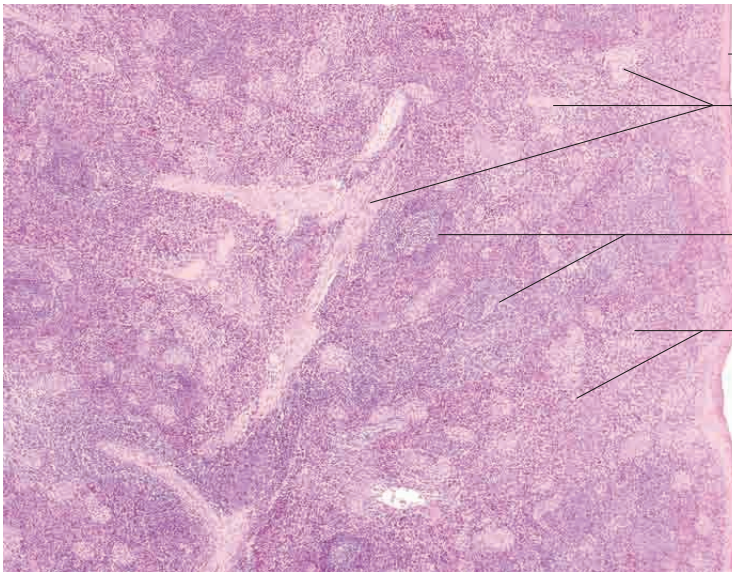
Spleen, dog, exsanguinated. H.E. stain; x200.



- Red pulp with blood cells in sinusoidal spaces
- Mesh-like arrangement of trabeculae containing smooth muscle cells
- Red pulp with blood cells in sinusoidal spaces
- Mesh-like arrangement of trabeculae

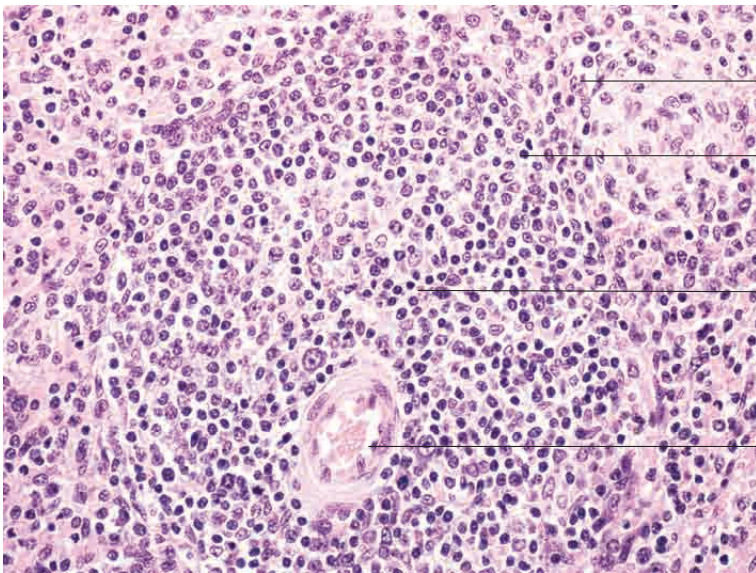
Spleen, horse. H.E. stain; x400.





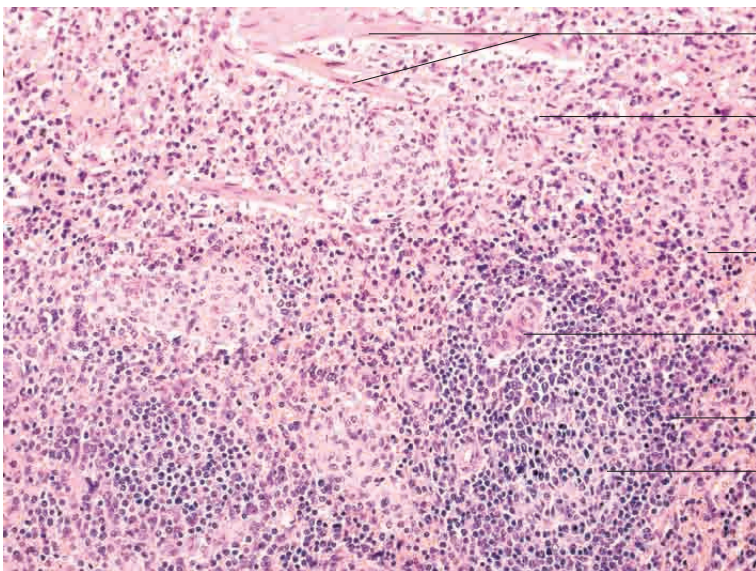
- Capsule
- Mesh-like arrangement of trabeculae containing smooth muscle cells
- White pulp (follicle)
- Red pulp

Spleen, pig. H.E. stain; x40.



- Red pulp
- White pulp (follicle)
- Immunologically active reaction centre with immune cells, macrophages and reticular cells
- Follicular arteriole with erythrocytes

Spleen, pig. H.E. stain; x400.



- Mesh-like arrangement of trabeculae with smooth muscle cells
- Sinusoids in red pulp with reticular cells (little blood)
- Blood-filled sinusoids in red pulp with reticular cells
- Follicular arteriole
- Periarteriolar lymphoid sheath (PALS)
- Follicular reaction centre

Spleen, pig. H.E. stain; x200.