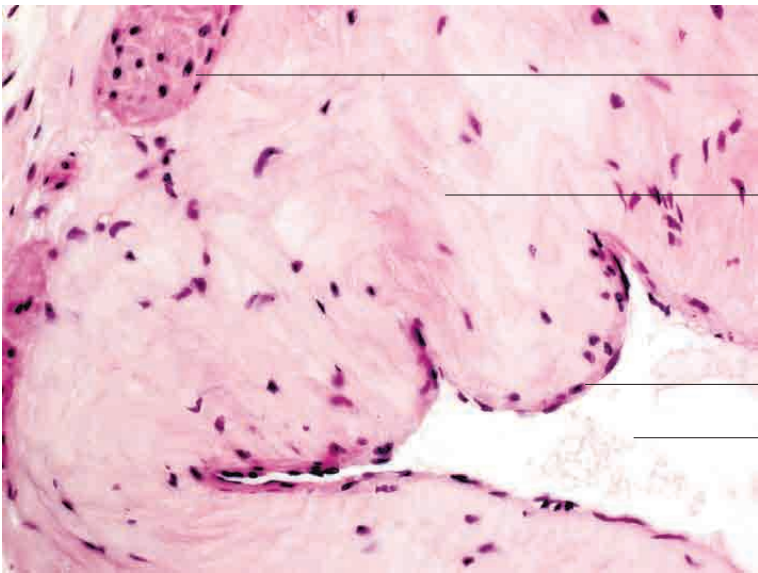
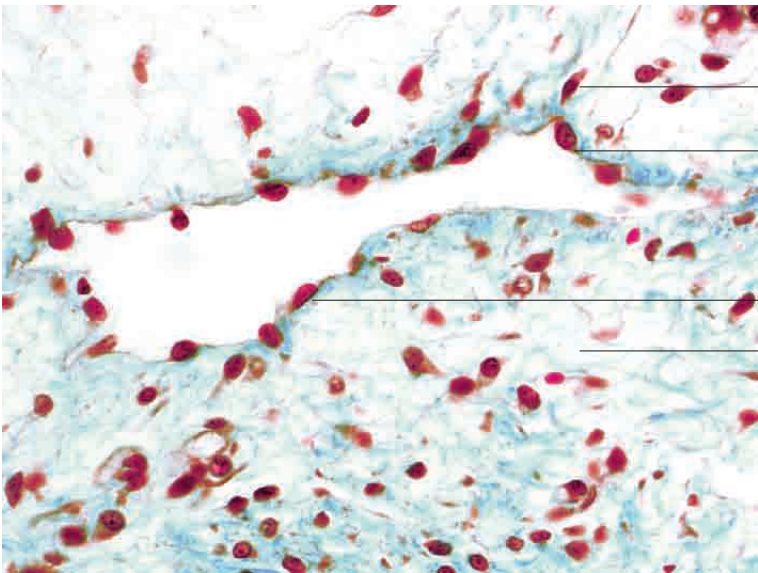
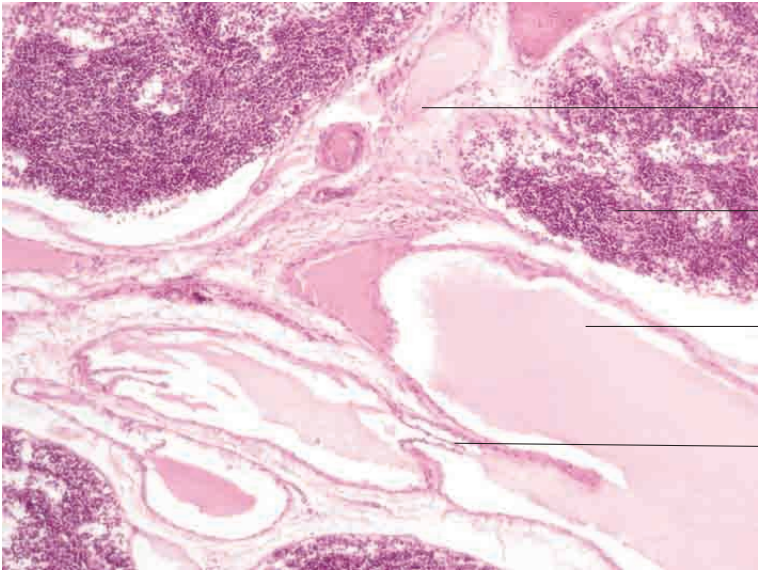
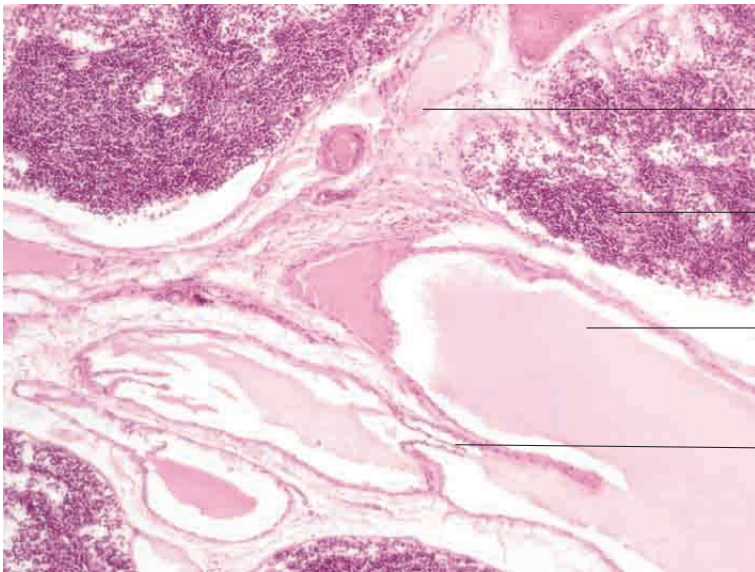


6 Circulatory system

---





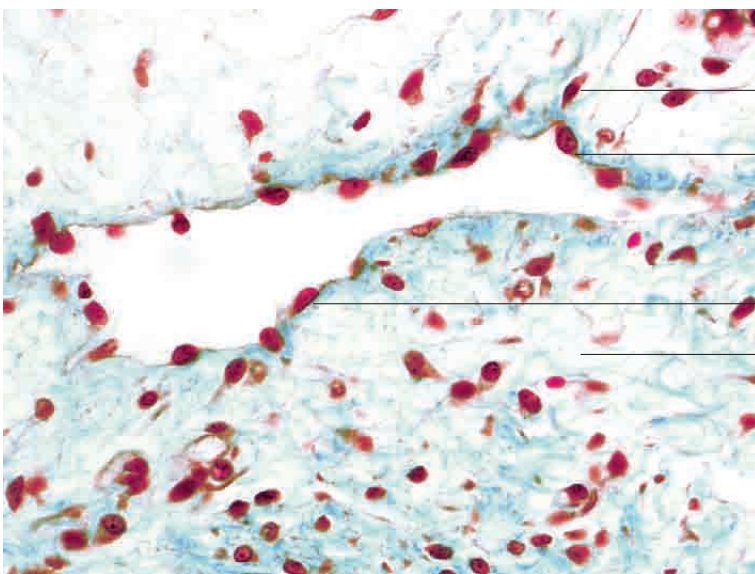
Lymph vessel at hilus of lymph node

Lymphoreticular tissue

Lymph vessel

Lymph vessel with two consecutive valves

Lymph vessels, lymph node, dog.  
H.E. stain; x100.



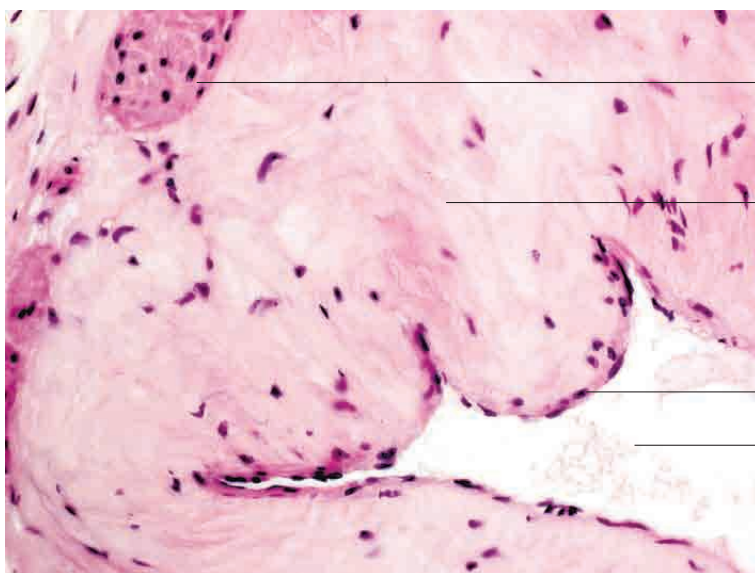
Nucleus of fibrocyte in loose connective tissue

Nucleus of endothelial cell in lymph vessel

Nucleus in endothelial cell in lymph vessel

Loose connective tissue

Lymph vessel, tongue, cat.  
Goldner's Masson trichrome stain; x480.



Smooth muscle cell in tunica media

Broad subendothelial layer

Endothelium

Lumen

Lymphatic collecting duct (ductus thoracicus),  
sheep. H.E. stain; x400.