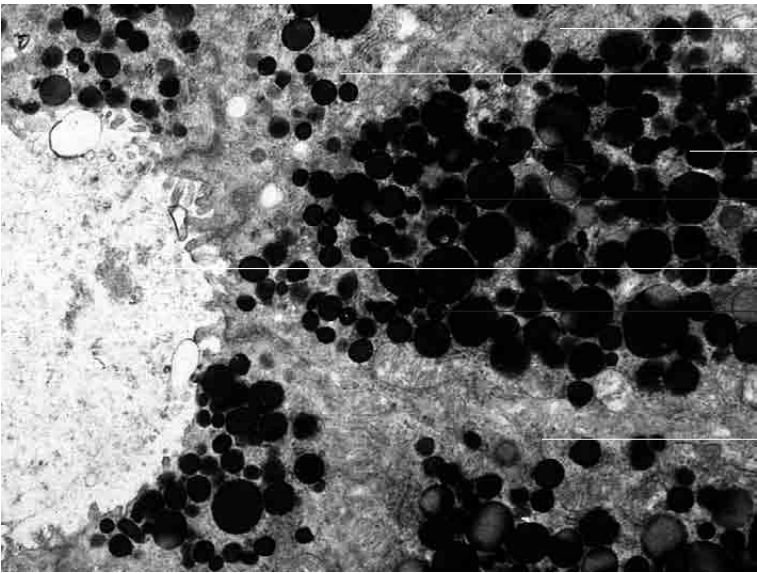
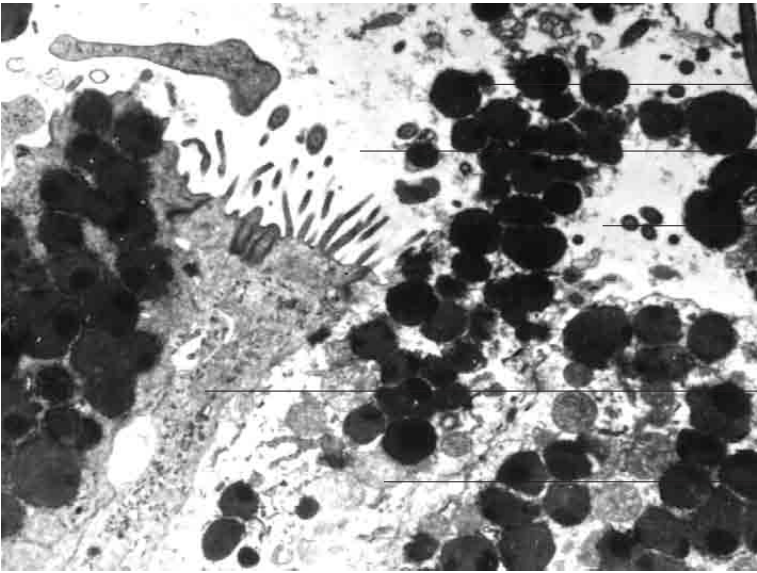
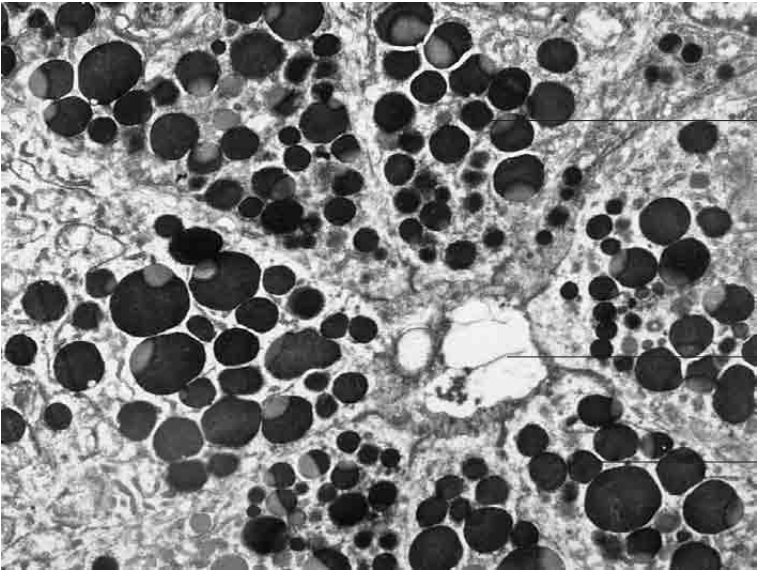
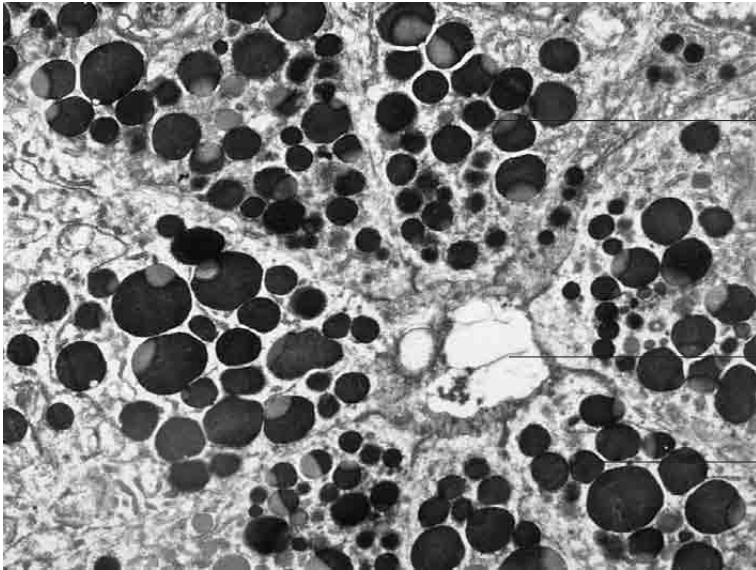


2 Epithelial tissue



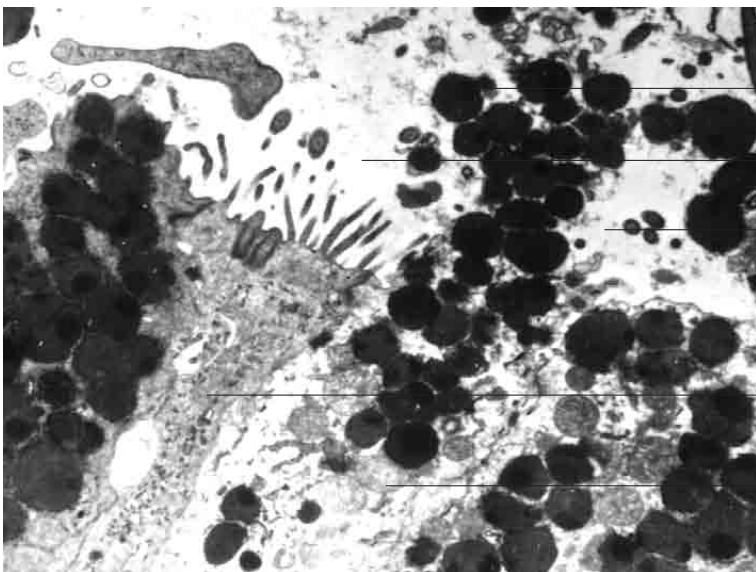


Exocrine secretory granules

Lumen of a tubular gland (cross section) with secretion

Exocrine secretory granule

Exocrine glands, stomach, dog; x 5500.



Eccrine, exocrine secretion of mucus granules

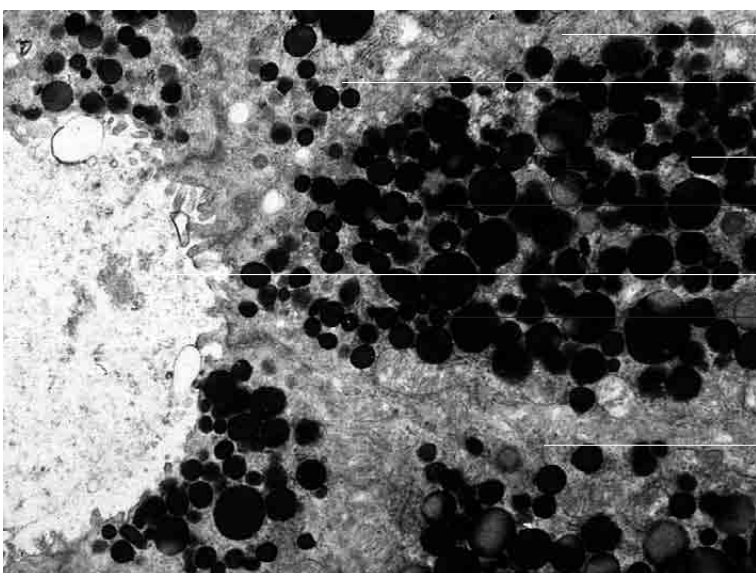
Lumen of tubular gland

Lumen of tubular gland

Cytoplasm of surface epithelial cell with microvilli

Cytoplasm of actively secreting gland cell

Exocrine glands, stomach, dog; x6000.



Cytoplasm of surface epithelial cell

Developing secretory granule

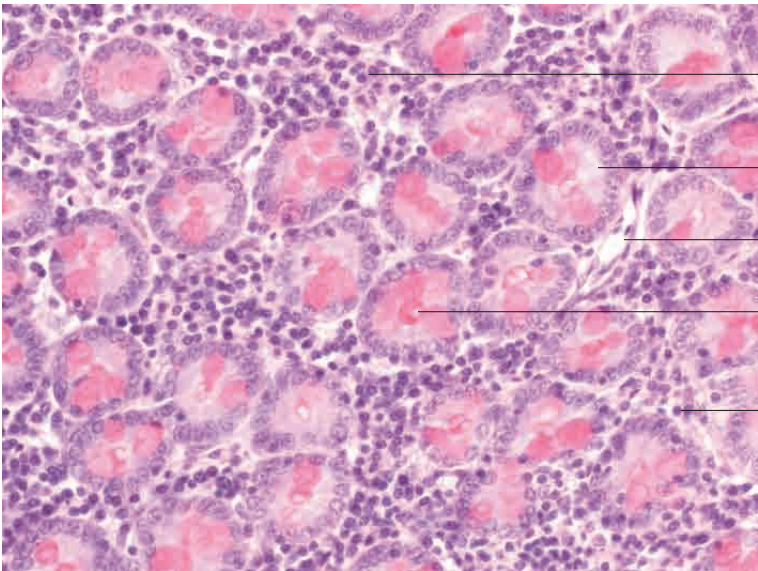
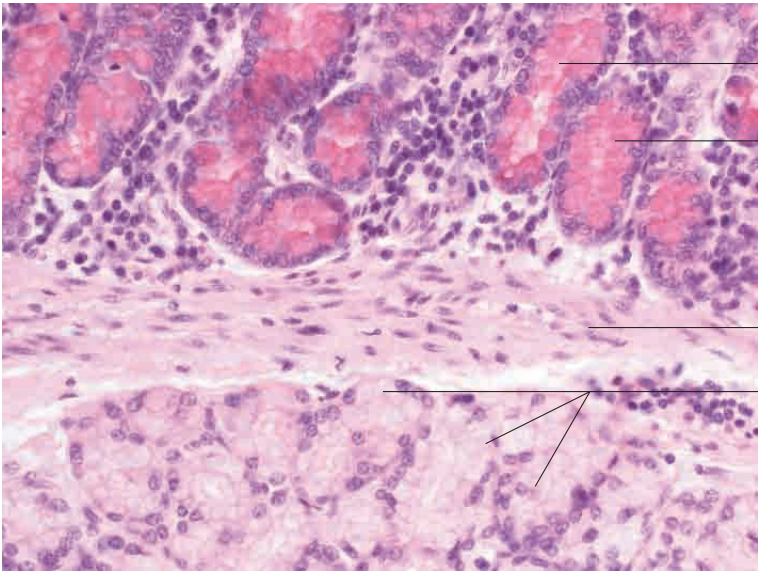
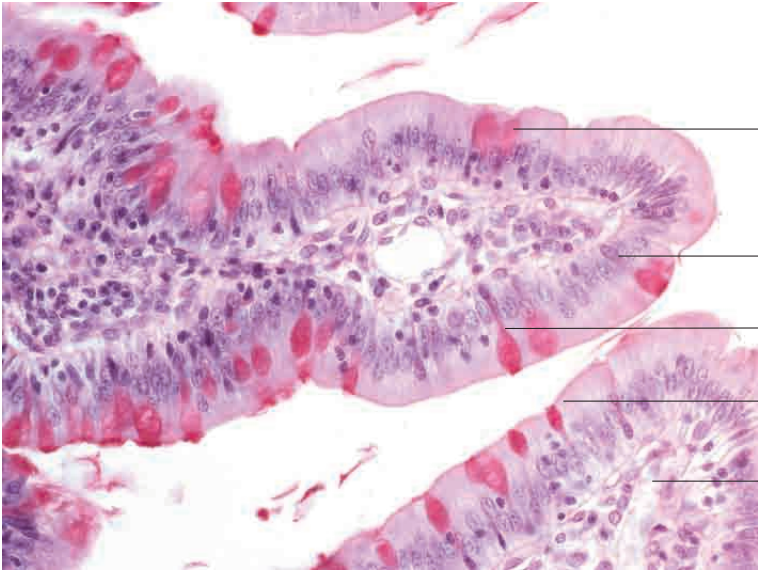
Secretory granules

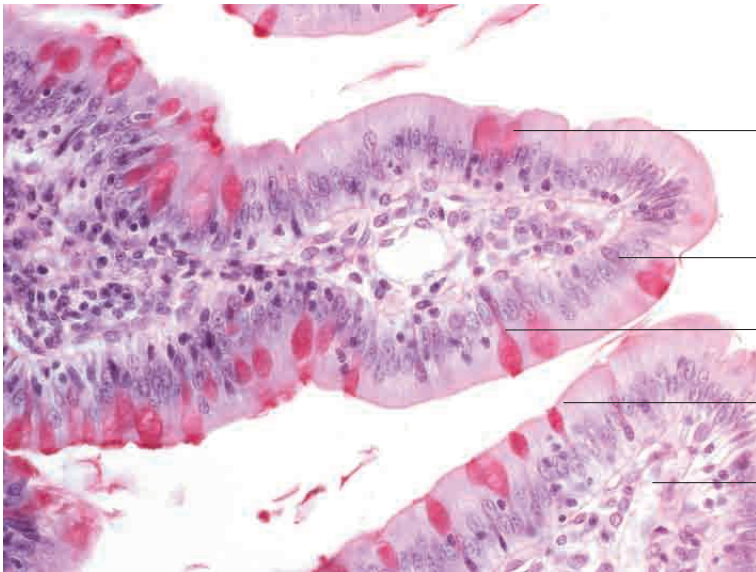
Lumen of tubular gland

Cytoplasm of surface epithelial cell with microvilli

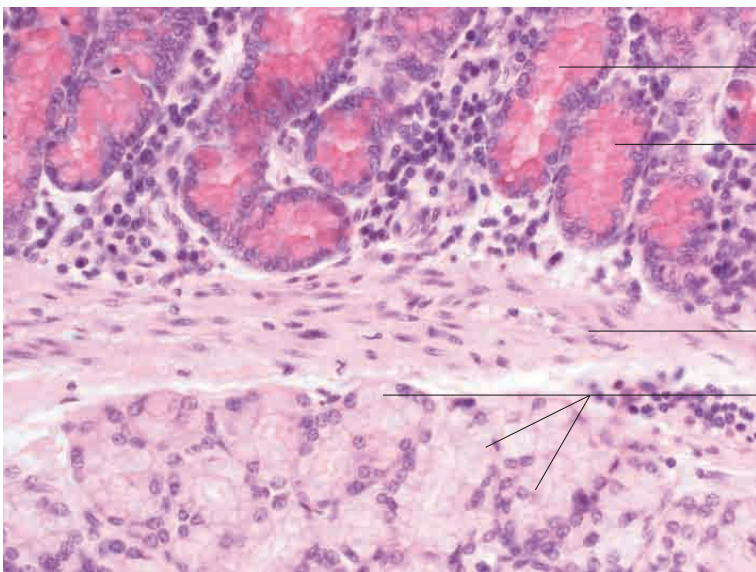
Exocrine glands, stomach, dog; x4000.

2 Epithelial tissue

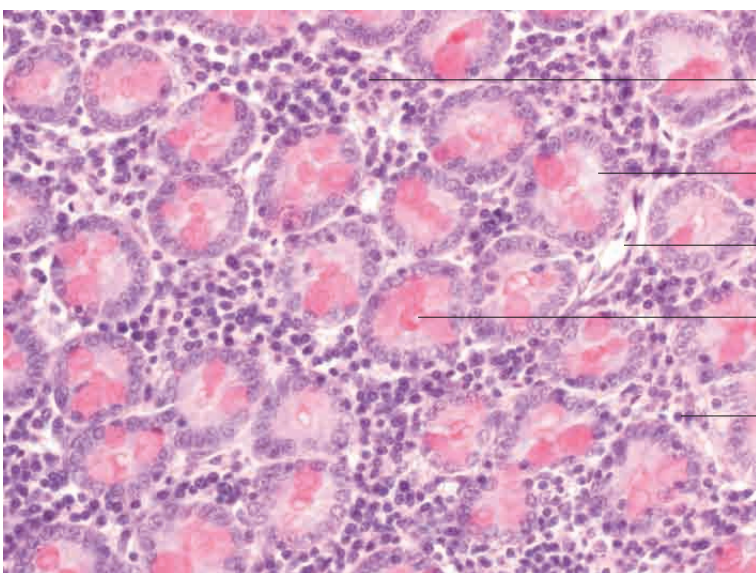




- Cytoplasm of monocellular, intraepithelial exocrine gland cell (goblet cell)
 - Nucleus of monocellular, intraepithelial exocrine gland cell (goblet cell)
 - Cytoplasm of monocellular, intraepithelial exocrine gland cell (goblet cell)
 - Simple columnar epithelium with brush border
 - Loose connective tissue with capillaries and smooth muscle cells (lamina propria mucosae)
- Small intestine, dog. H.E. stain; x250.

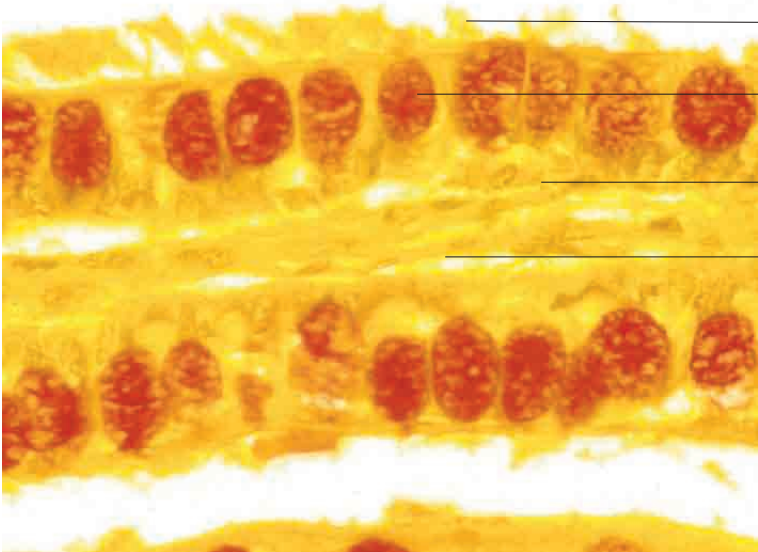
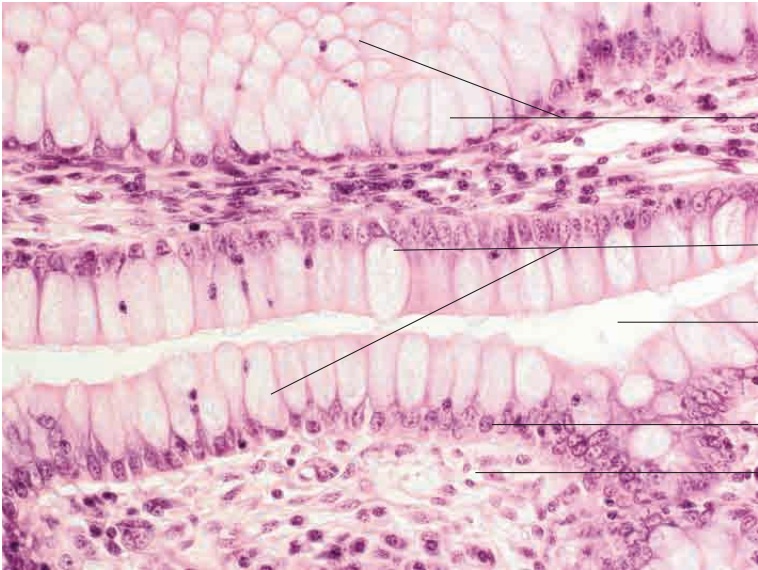
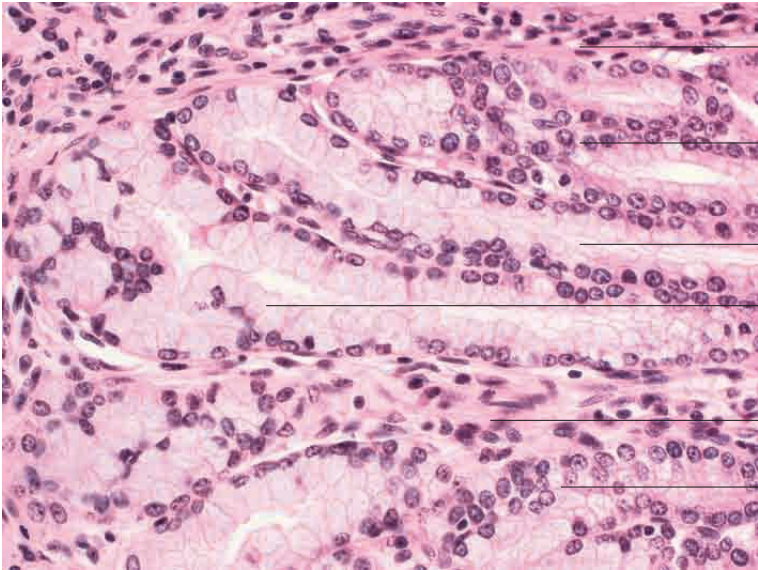


- Tubular gland lumen (oblique section)
 - Monocellular, intraepithelial exocrine gland (goblet cells)
 - Smooth connective tissue with capillaries and smooth muscle cells (lamina propria mucosae)
 - Partial sections of mucous tubular glands (duodenal glands) in the tela submucosa
- Small intestine, dog. H.E. stain; x180.

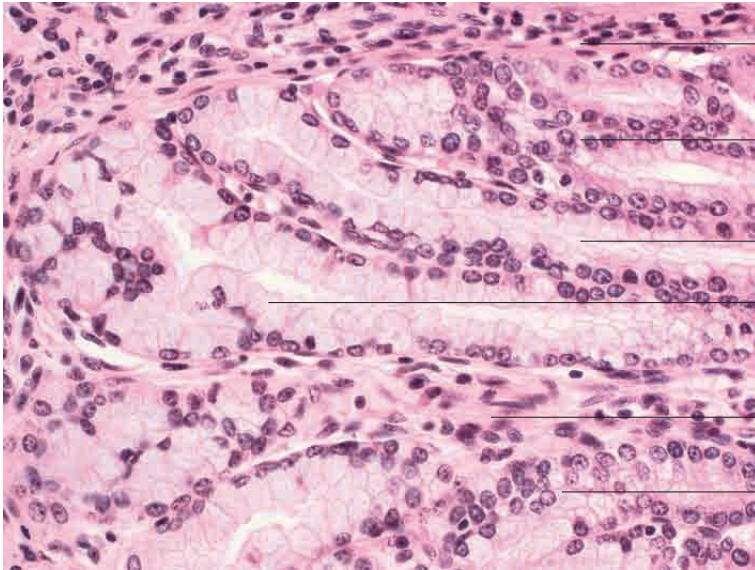


- Loose connective tissue with capillaries, smooth muscle cells and infiltrating lymphoid cells (lamina propria mucosae)
 - Wall of tubular gland (cross section)
 - Capillary
 - Lumen of tubular gland (cross section) with monocellular, intraepithelial exocrine gland cells (goblet cells)
 - Loose connective tissue with capillaries, smooth muscle cells and infiltrating lymphoid cells (lamina propria mucosae)
- Small intestine, dog. H.E. stain; x180.

2 Epithelial tissue



Exocrine glands



Loose connective tissue with capillaries, fibrocytes and smooth muscle cells of the lamina propria mucosae

Oblique section of wall of tubular gland with goblet cells

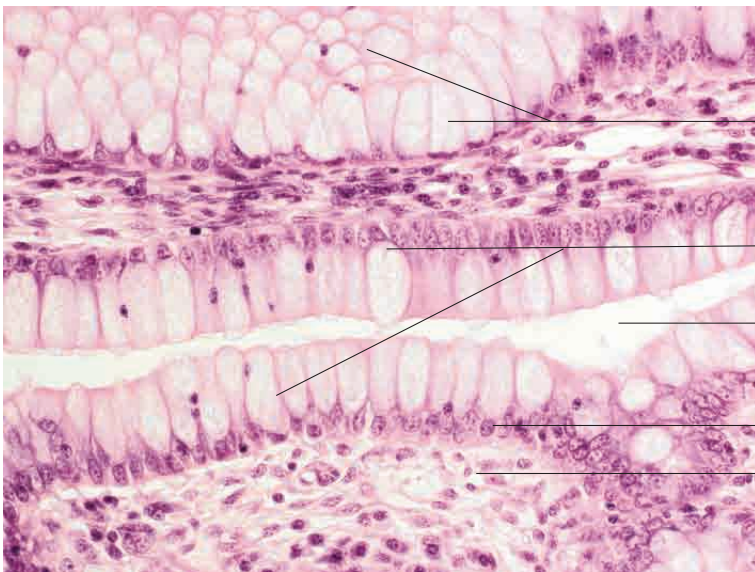
Lumen of tubular gland (longitudinal section)

Wall of tubular gland with columnar epithelium and goblet cells

Loose connective tissue of lamina propria mucosae

Flat section of the wall of tubular gland

Large intestine, pig. H.E. stain; x220.



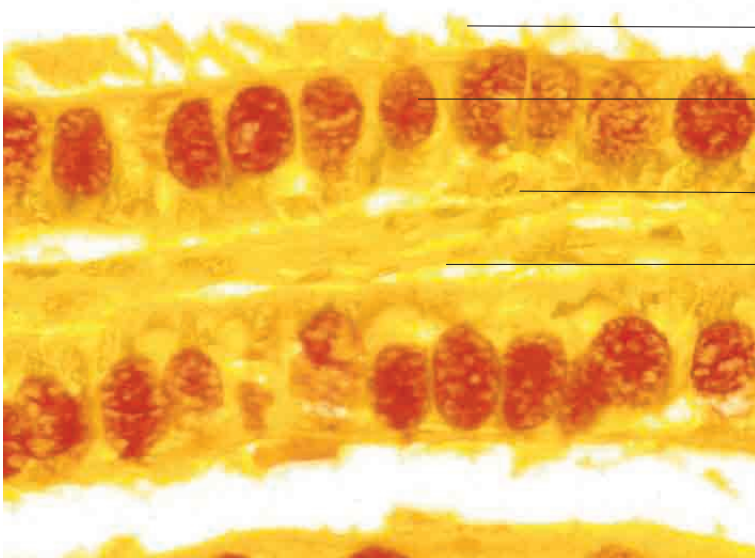
Intraepithelial, monocellular exocrine mucus-producing goblet cell in longitudinal section and oblique side view

Goblet cells with light cytoplasm mucinogen-filled cytoplasm and a basal nucleus, the cell boundaries are clearly evident
Space between adjacent intestinal crypts (longitudinal section)

Basally located nucleus of goblet cell

Loose connective tissue with capillaries, fibrocytes and smooth muscle cells

Large intestine, goblet cells, dog. H.E. stain; x300.



Mucus

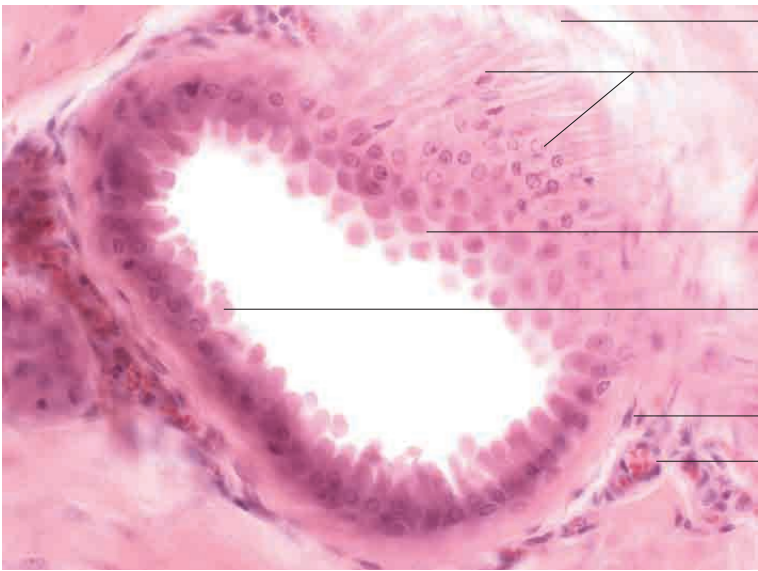
Goblet cell

Basally located nucleus of goblet cell

Loose connective tissue

Large intestine, goblet cells, dog. Mucicarmine stain; x480.

2 Epithelial tissue





Flat section of wall of sweat gland

Loose connective tissue with fat cells and capillaries

Cross section of wall of sweat gland

Dermis (corium)

Skin, pig. H.E. stain; x250.



Dermis (corium) with capillary plexus and fibrocytes

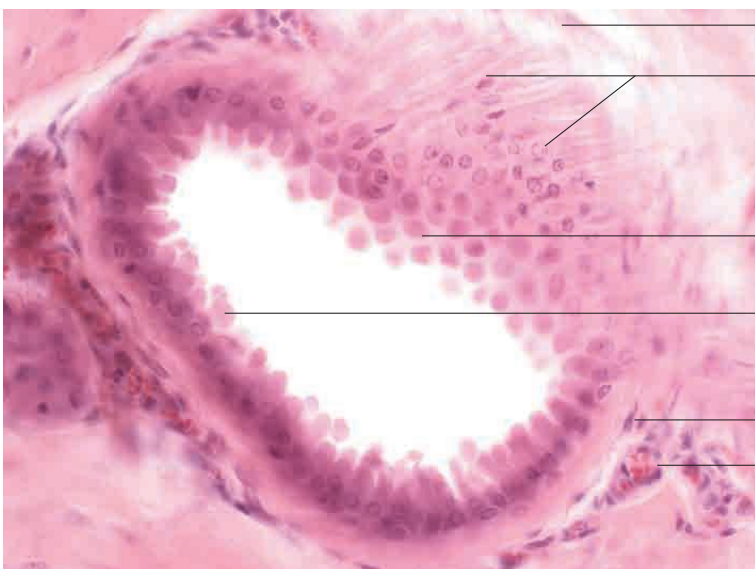
Nucleus of epithelial cell of exocrine, exoepithelial, eccrine coiled tubular sweat gland

Lumen of sweat gland

Apocrine secretion into gland lumen

Myoepithelial cells

Skin, pig. H.E. stain; x480.



Dermis (corium)

Flat section of contractile basket cells (myoepithelial cells) of sweat gland, closely associated with tubular wall of gland

Flat section of wall of tubular gland during apocrine secretion

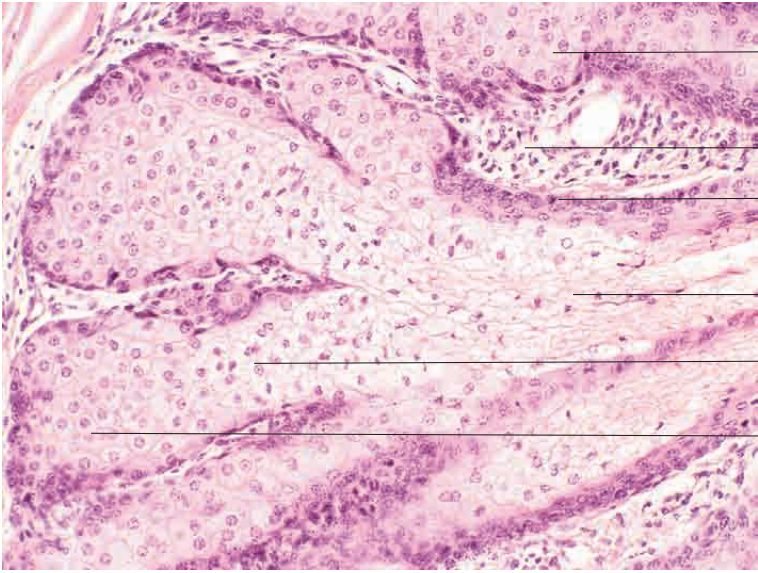
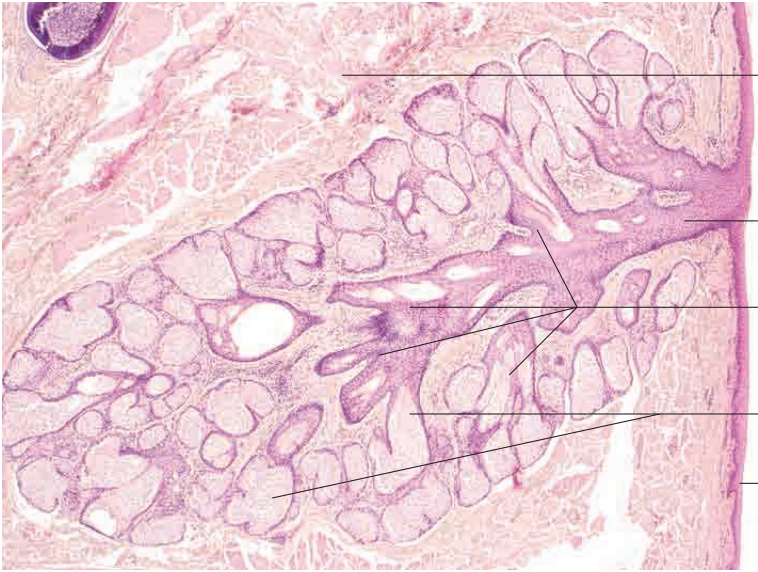
Cytoplasmic evagination during apocrine secretion

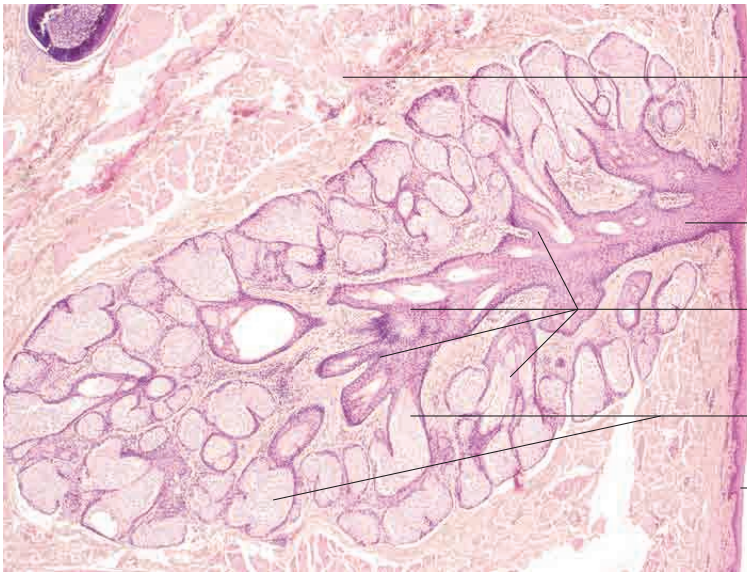
Basket cell (myoepithelial cell)

Capillary with erythrocytes

Skin, pig. H.E. stain; x720.

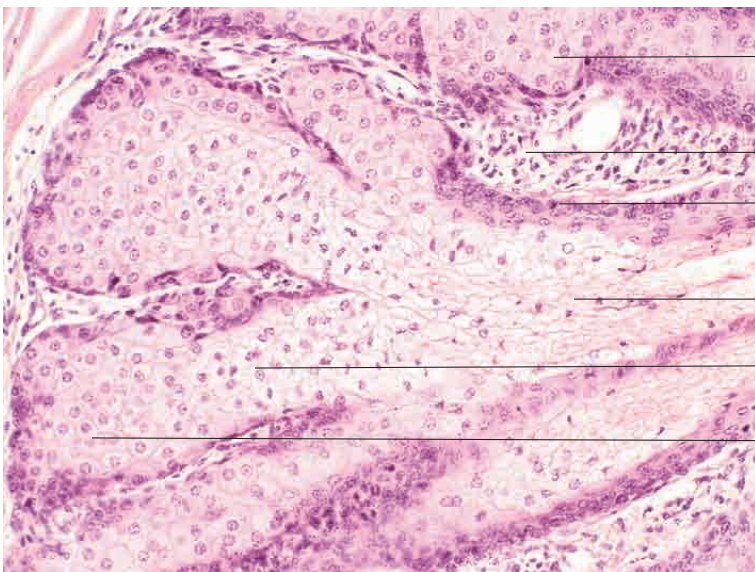
2 Epithelial tissue





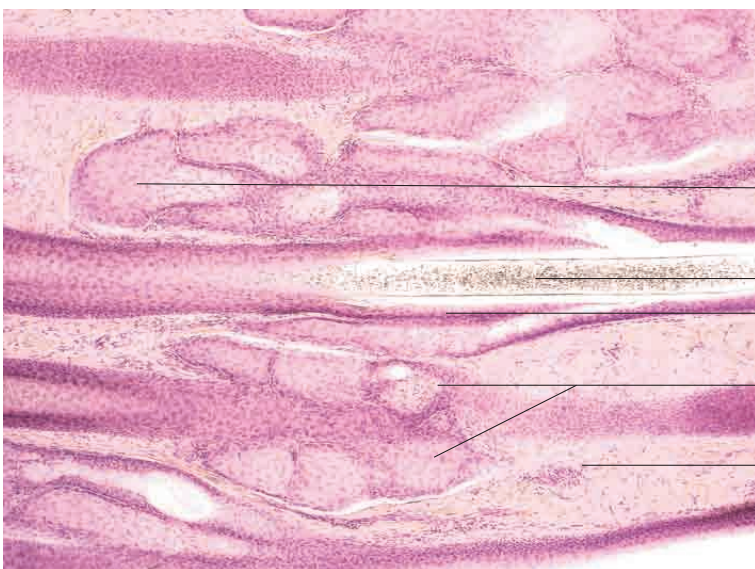
- Loose connective tissue
- Wall of excretory duct of sebaceous gland (section does not include lumen)
- Branched sections of compound sebaceous gland
- End pieces of exocrine, exoepithelial tubuloalveolar compound sebaceous gland
- Stratified surface epithelium

Sebaceous gland, eyelid, ox. H.E. stain; x200.



- Basal cells from parts of wall of sebaceous gland (flat sections)
- Loose connective tissue
- Basal cells
- Secretion of exocrine, exoepithelial sebaceous gland including epithelial cell fragments
- Fragmented cellular components and basal cell secretions
- Alveolus of a sebaceous gland

Sebaceous gland, skin, dog. H.E. stain; x480.



- End piece of exocrine, exoepithelial, tubuloalveolar compound sebaceous gland
- Hair with medulla
- Sebaceous glands
- Loose connective tissue of dermis (corium)

Sebaceous gland, lip, dog. H.E. stain; x250.