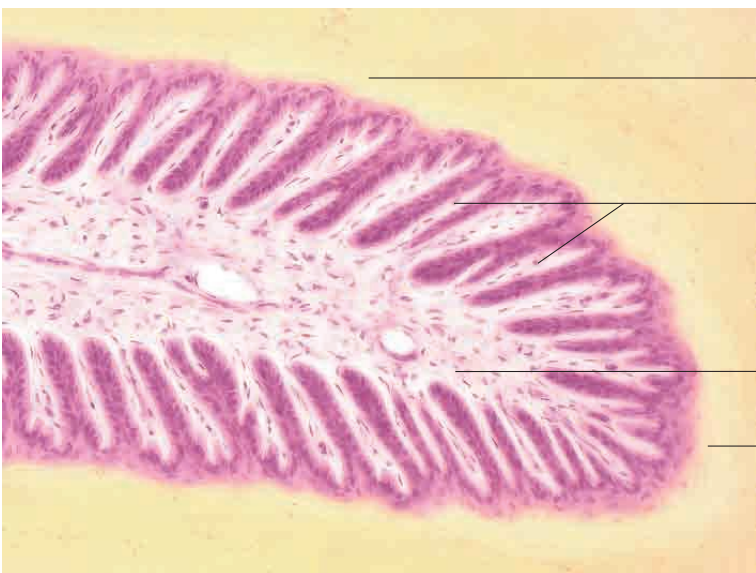
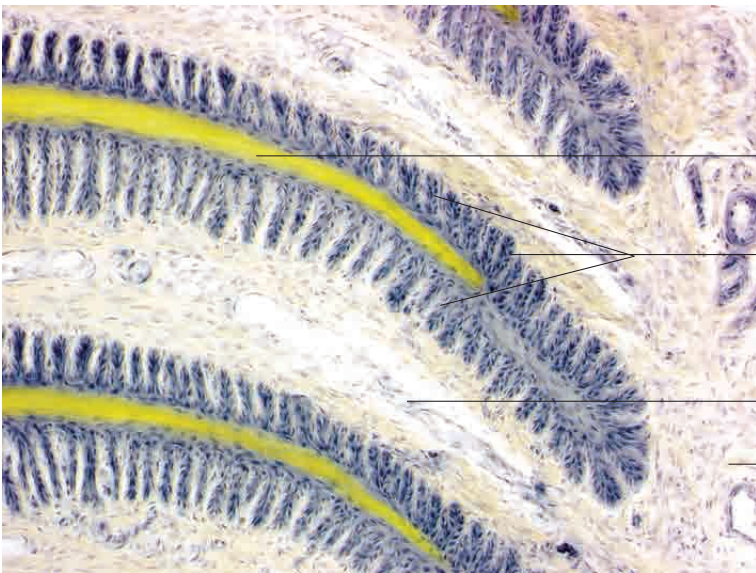
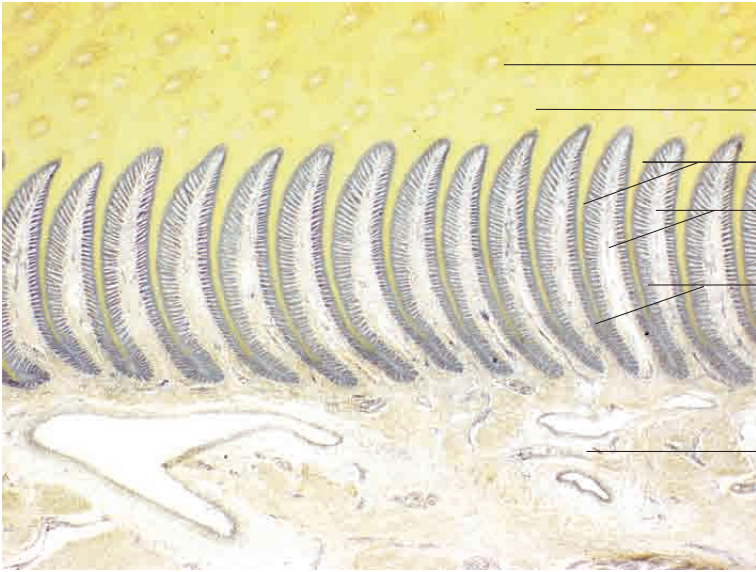
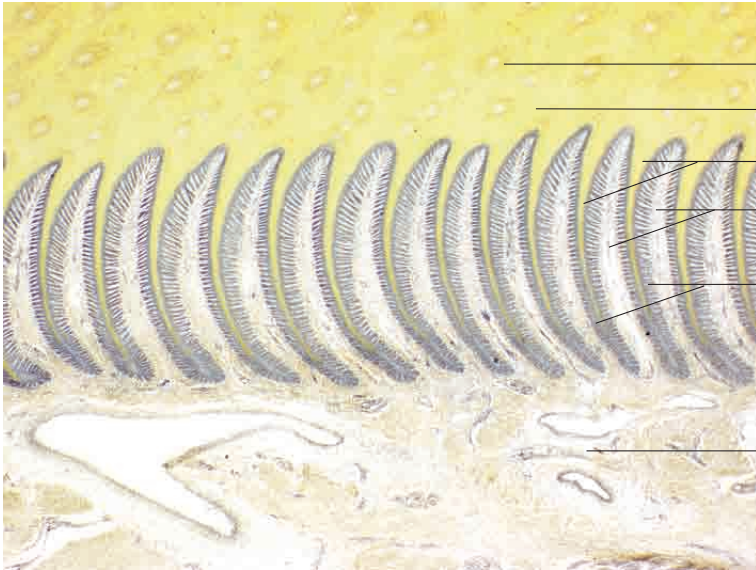


# 15 Common integument

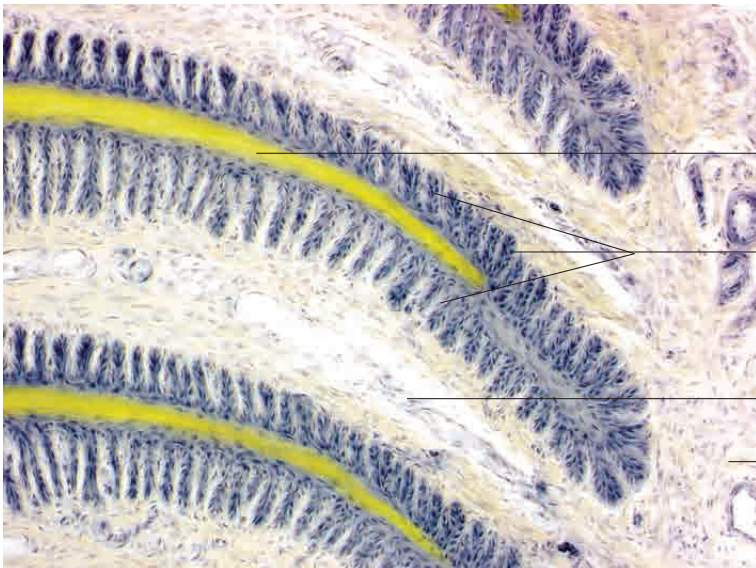
---





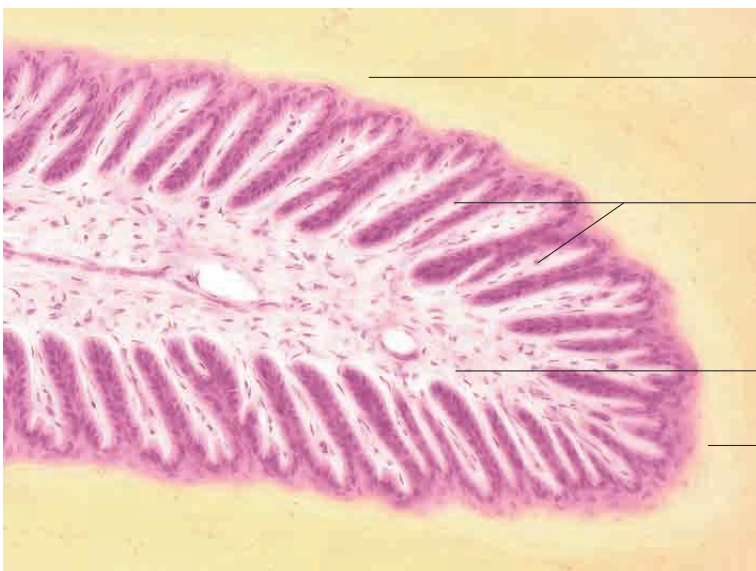
- Coronary tubules
- Cap horn
- Primary epidermal laminae
- Primary dermal laminae
- Secondary dermal laminae
- Stratum reticulare with vessels

Hoof, horse. Iron haematoxylin picric acid stain; x40.



- Interpapillary horn
- Secondary dermal laminae
- Primary dermal laminae
- Stratum reticulare with vessels

Hoof, horse. Iron haematoxylin picric acid stain; x200.

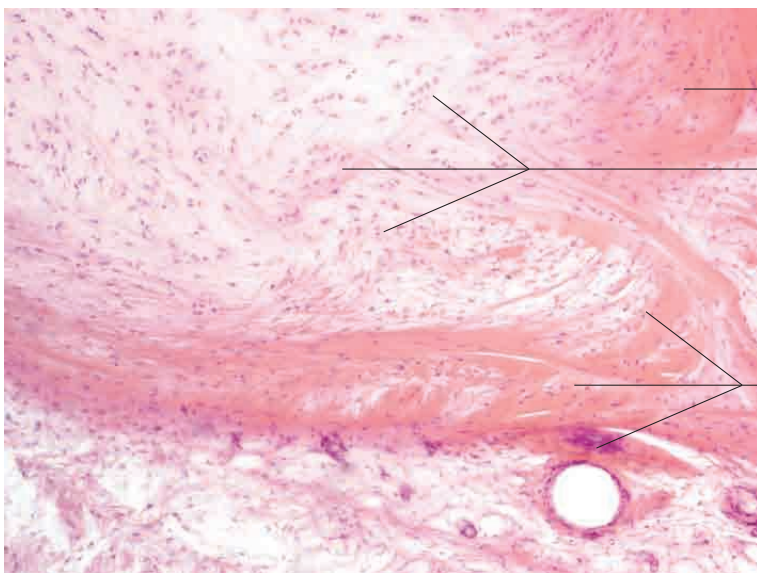
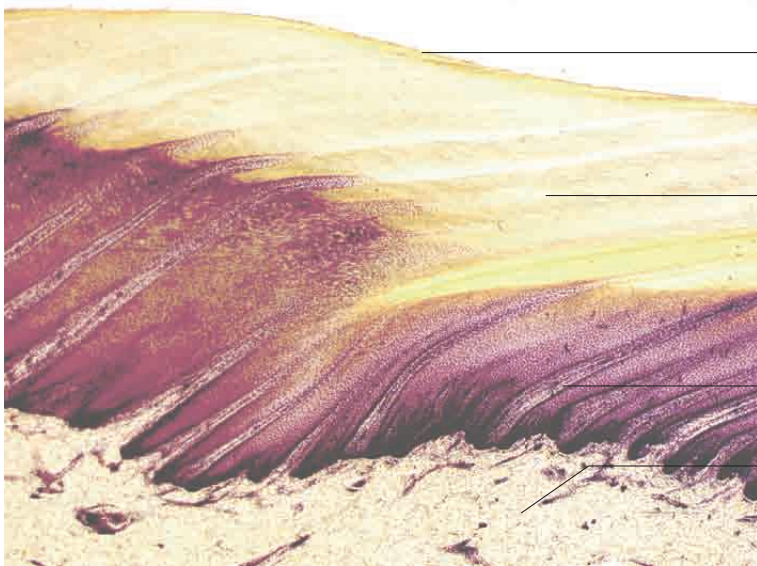


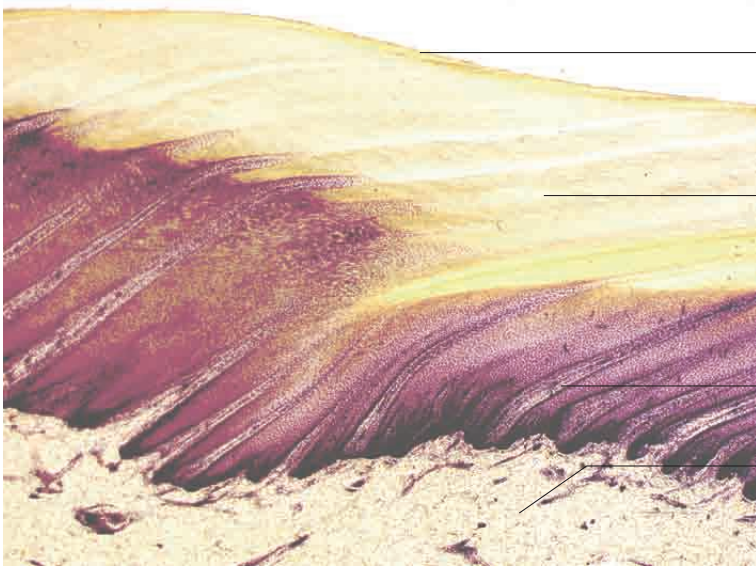
- Peripapillary horn
- Secondary dermal laminae
- Primary dermal laminae with capillaries and loose connective tissue
- Suprapapillary horn

Hoof, horse. H.E. stain; x400.

# 15 Common integument

---





Periopic horn

Coronary horn

Coronary papillae

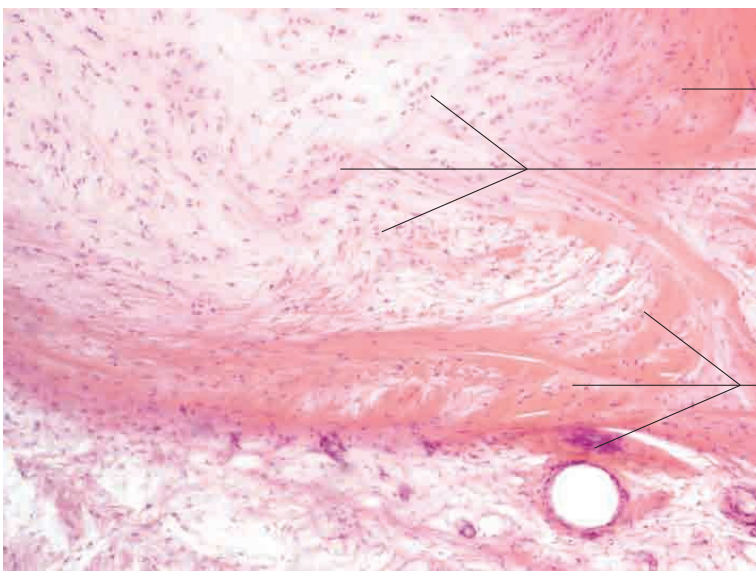
Coronary cushion

Hoof, periopic and coronary segments, horse. H.E. stain; x40



Tubular horn in coronary segment from longitudinally oriented keratinised cells (longitudinal section)

Hoof, coronary segment, horse. H.E. stain; x100.



Elastic fibre bundle, arranged along lines of tension and compression

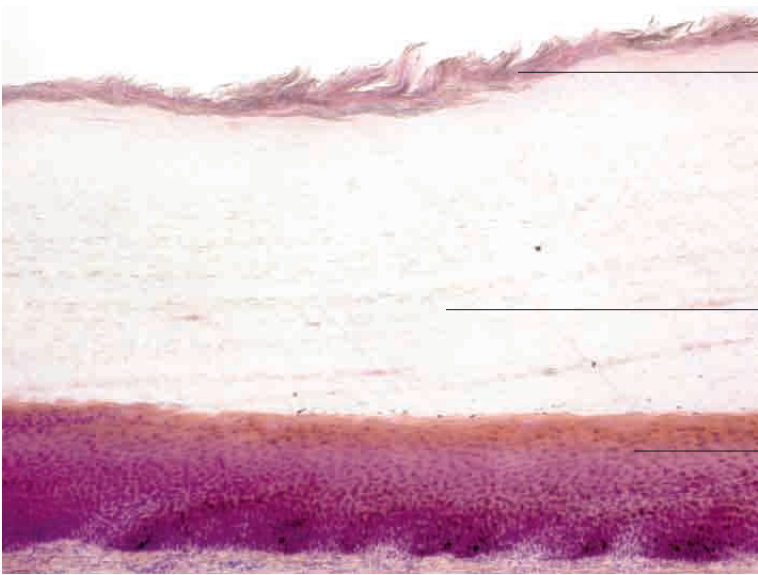
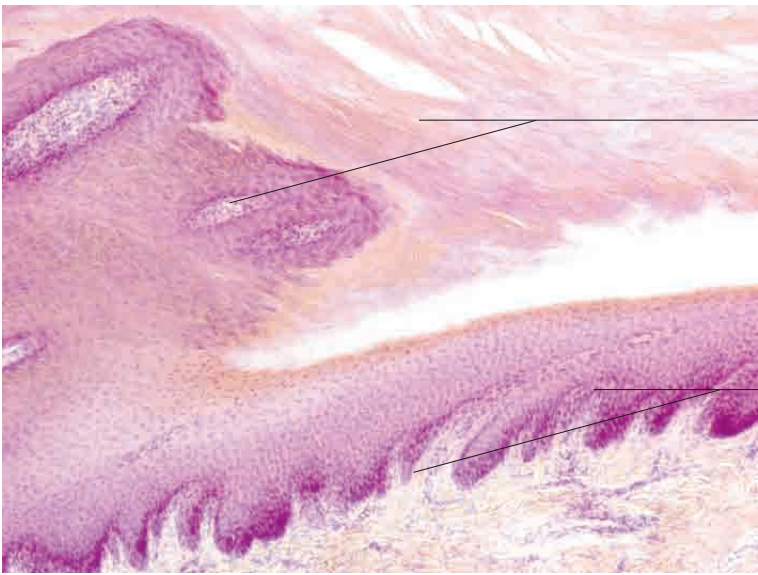
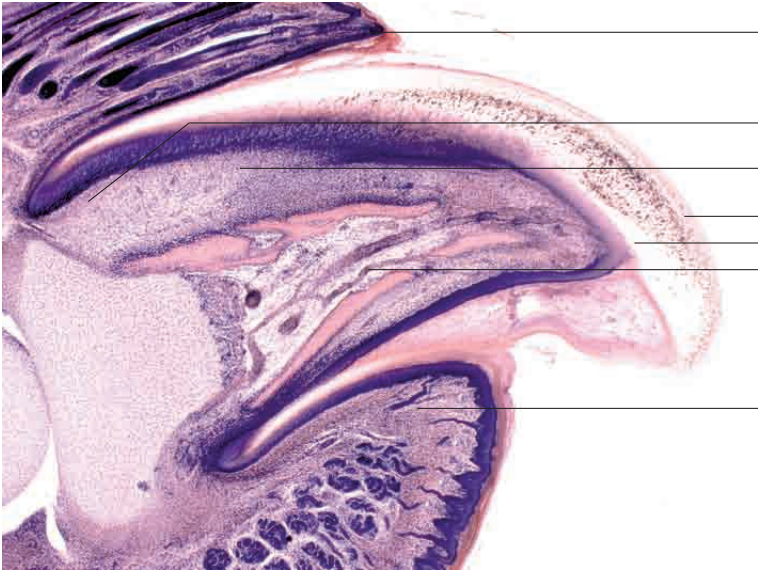
Ground substance and chondrocytes, arranged along lines of tension and compression

Elastic fibre bundle, arranged along lines of tension and compression

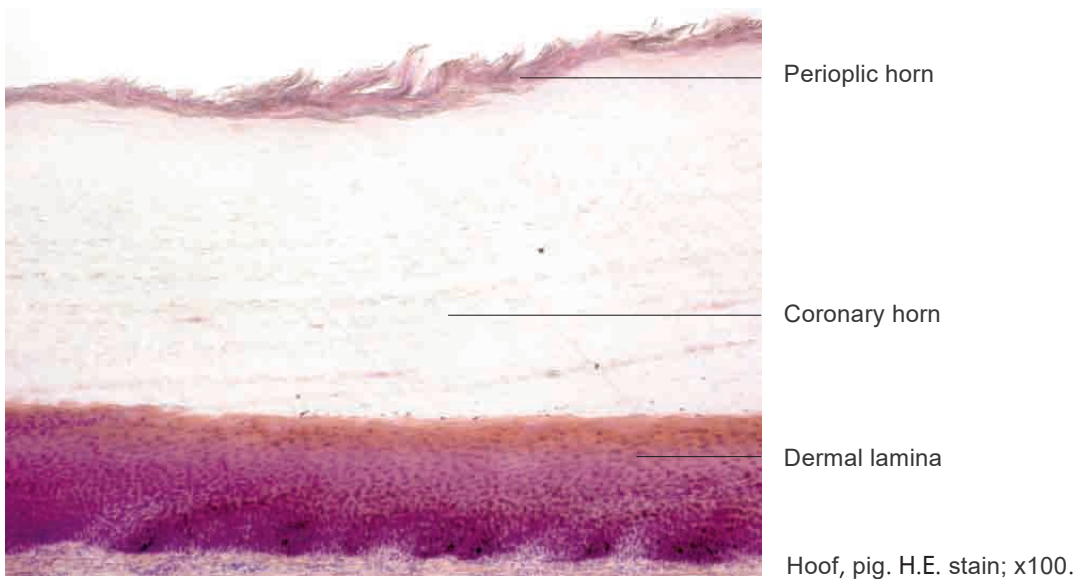
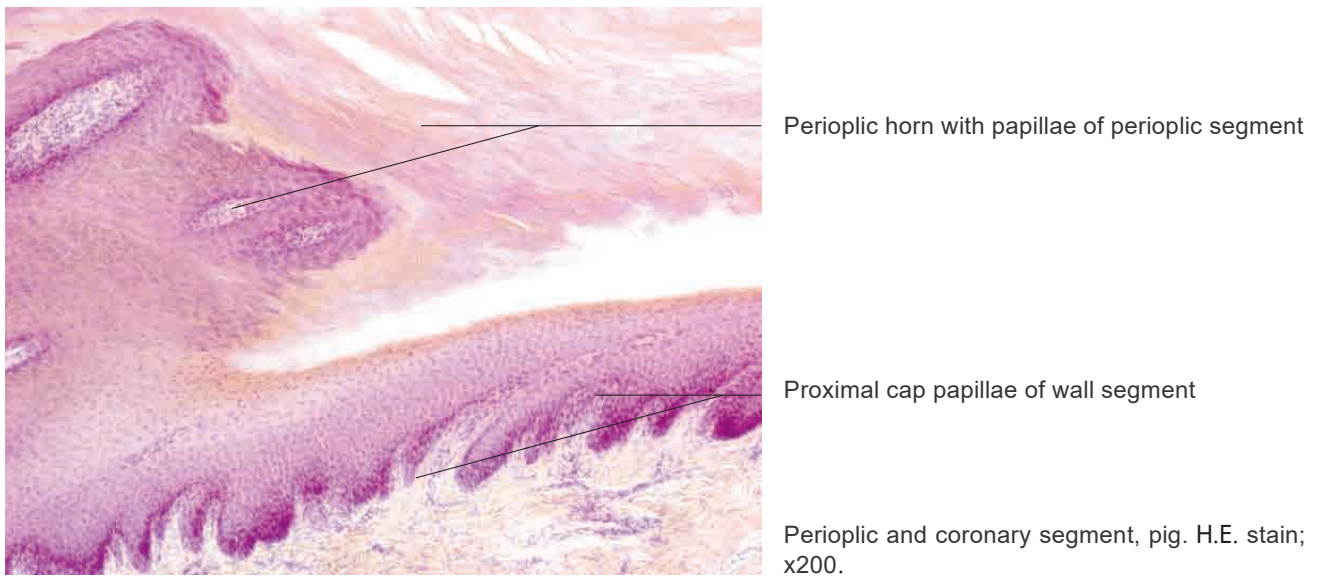
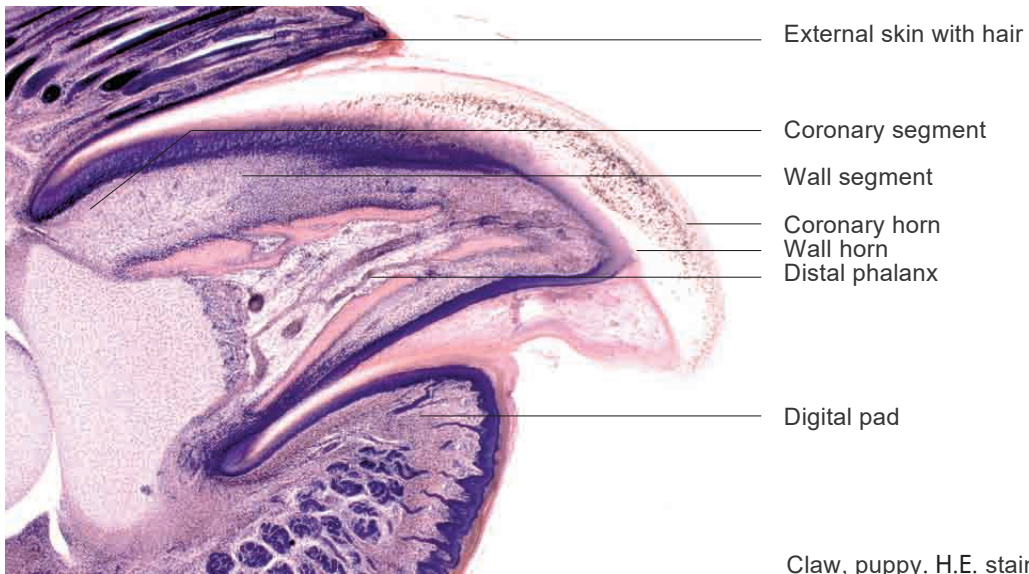
Hoof cartilage, horse H.E. stain; x100.

# 15 Common integument

---

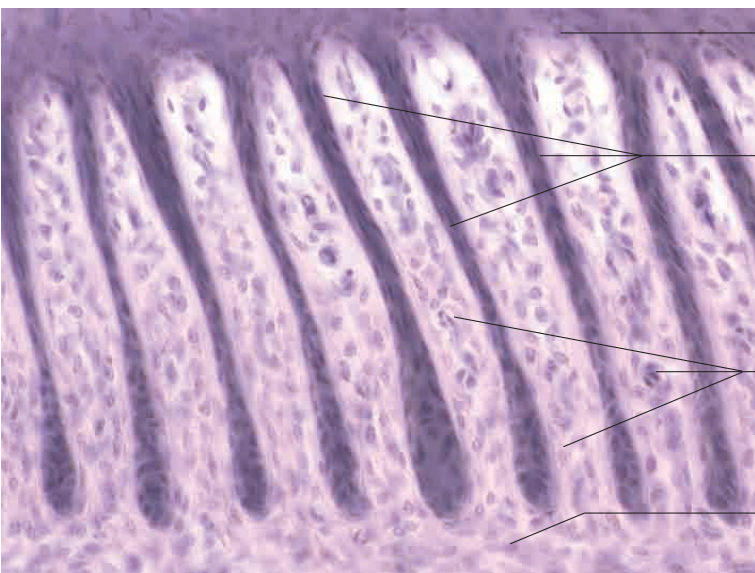
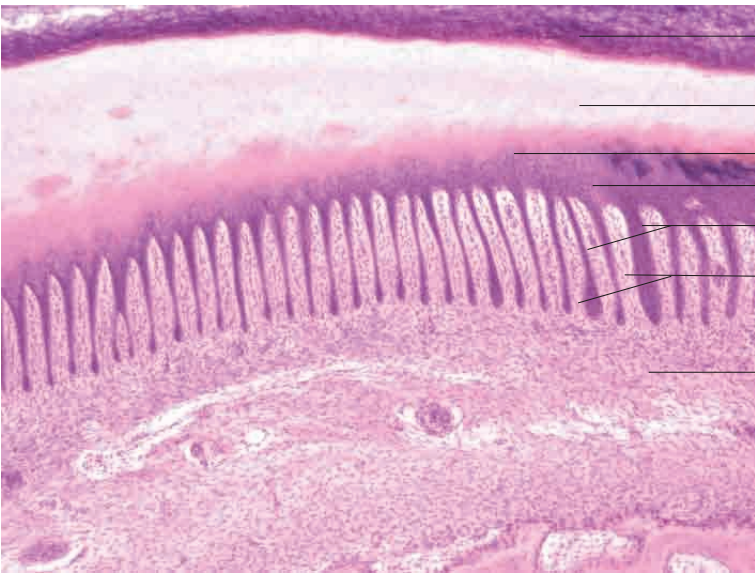
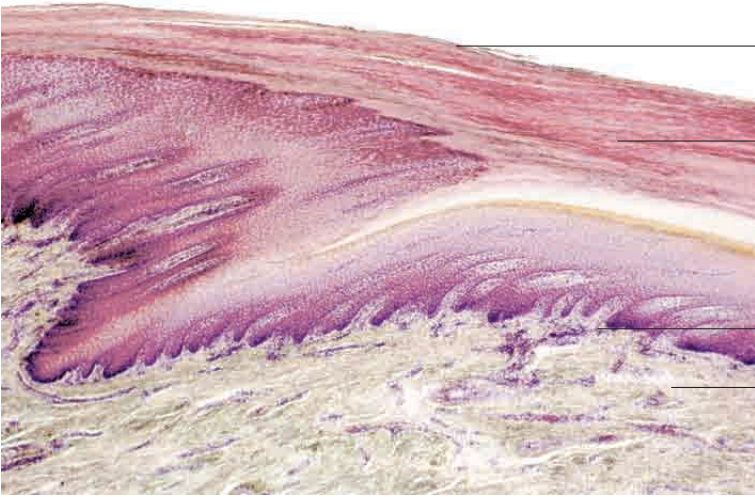


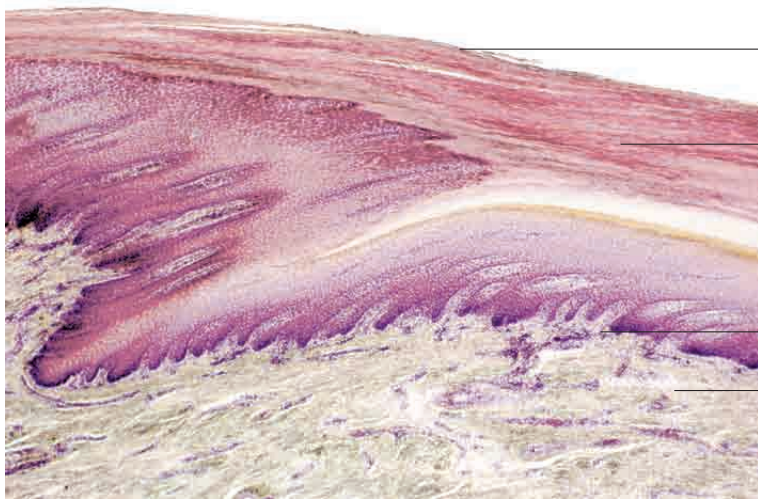
## Claw and swine hoof



# 15 Common integument

---





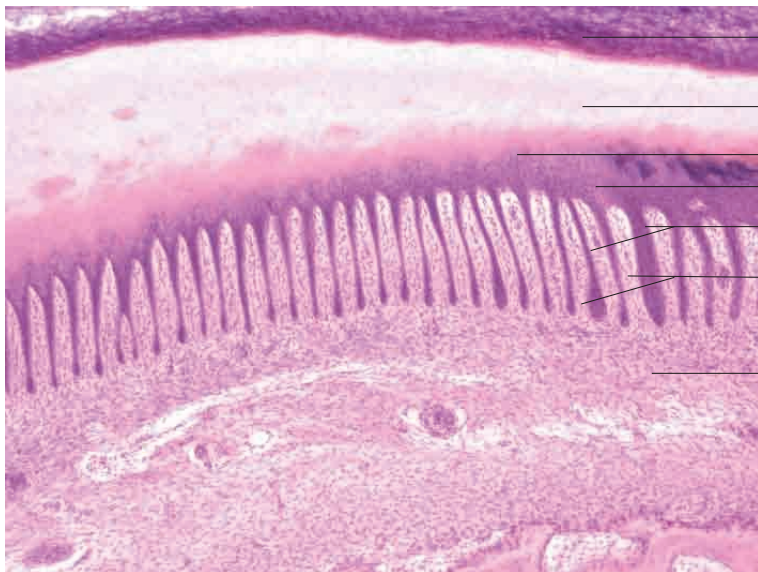
Perioplic horn

Coronary horn

Coronary papillae

Coronary cushion

Perioplic and coronary segment, ox. H.E. stain; x40.



Perioplic horn

Coronary horn

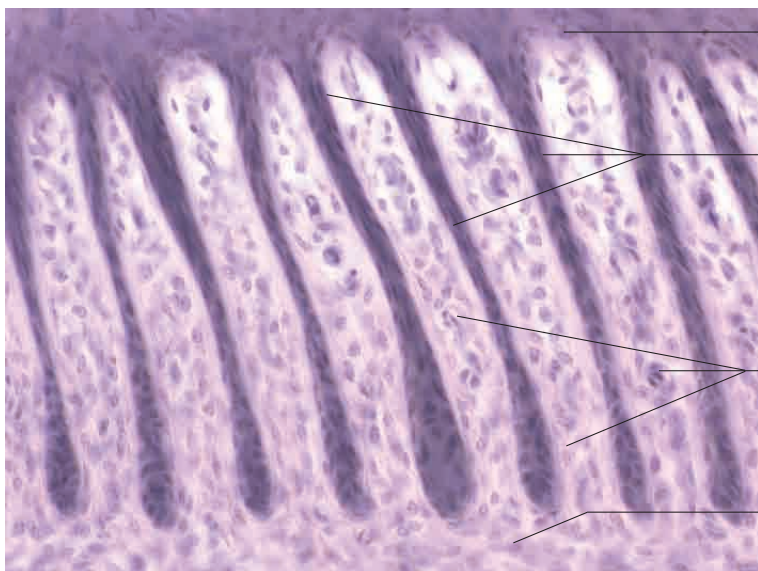
Coronary horn tubules  
Cap horn

Wall horn laminae

Dermal laminae

Stratum reticulare

Hoof, sheep. H.E. stain; x100.



Cap horn

Wall horn laminae

Dermal laminae

Stratum reticulare

Hoof, sheep. H.E. stain; x400.