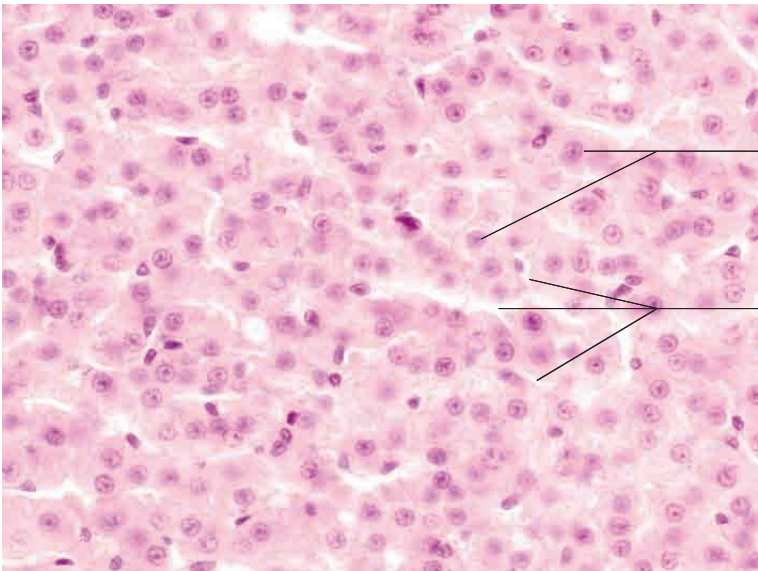
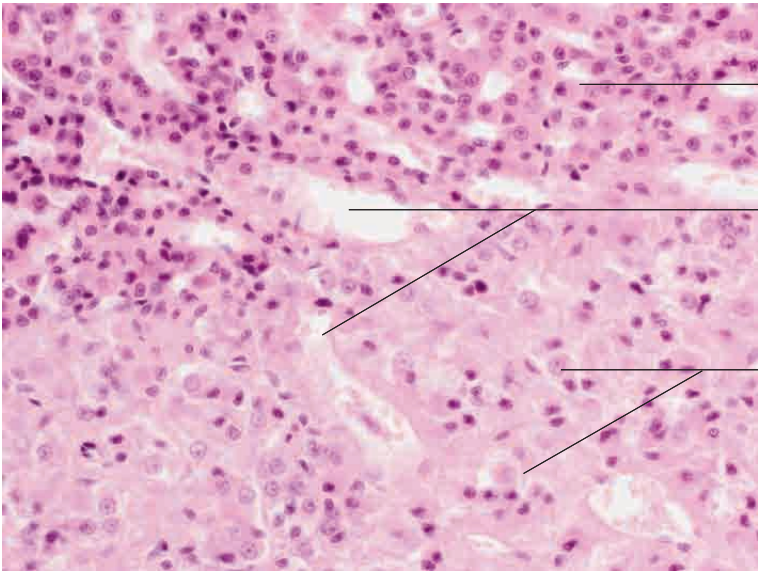
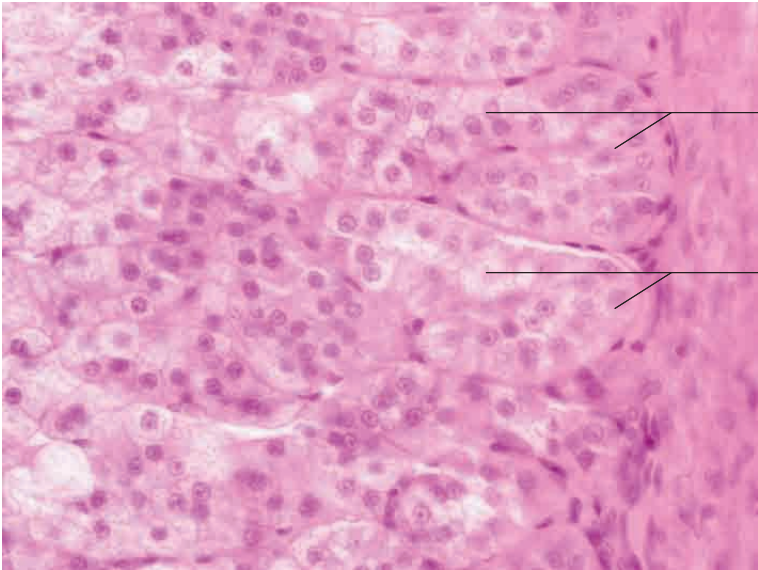
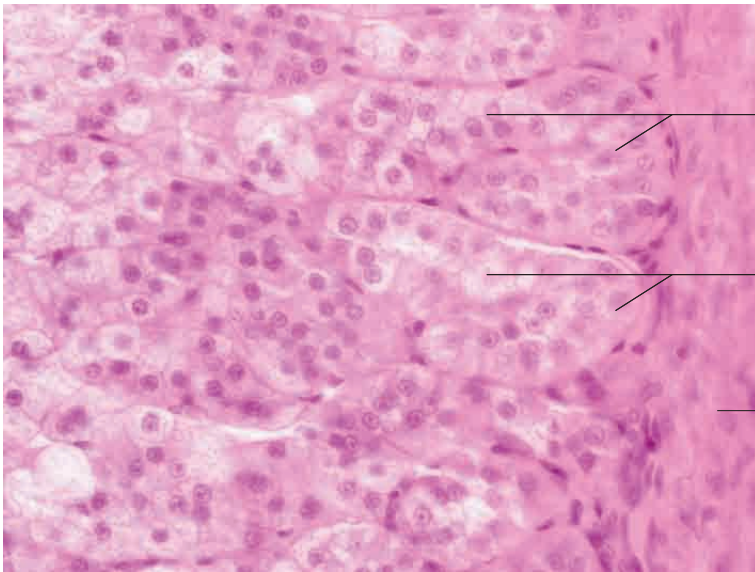


9 Endocrine system



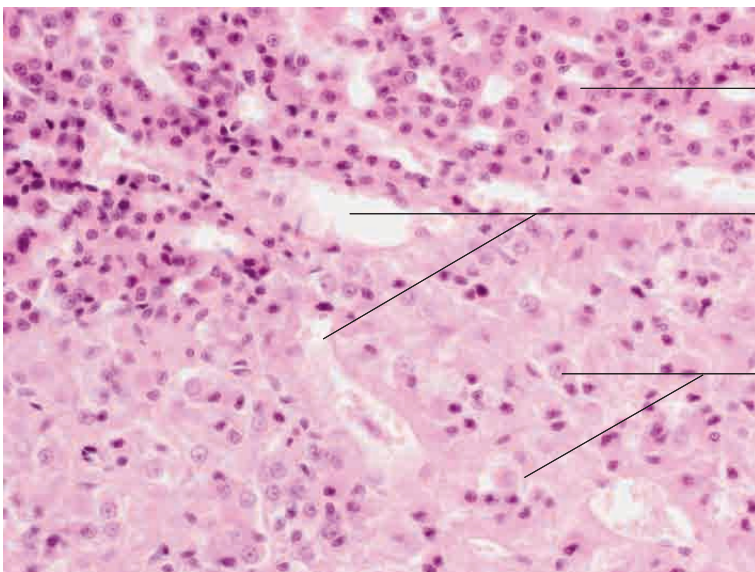


Arcades of weakly acidophilic cells

Arcades of weakly acidophilic cells

Capsule

Adrenal gland, zona arcuata, cat. H.E. stain; x400.

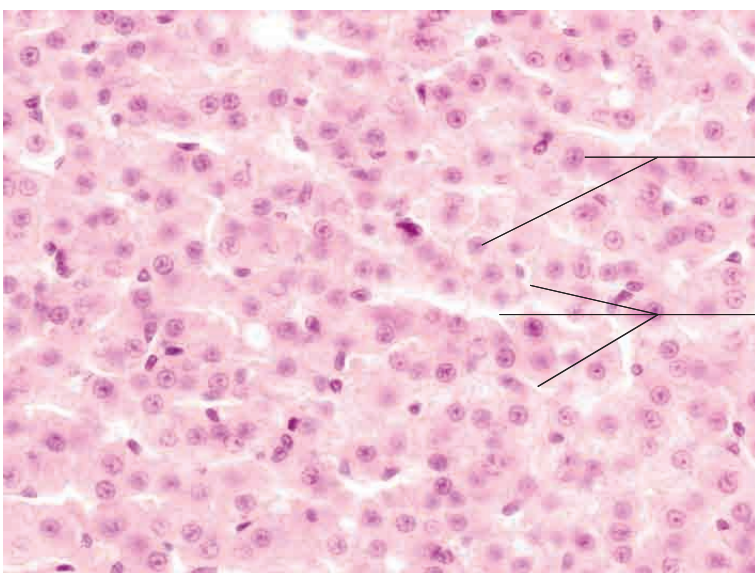


Zona reticularis, irregularly arranged cords of endocrine cells

Capillaries passing from adrenal cortex to adrenal medulla (venous sinusoids)

Chromaffin cells in adrenal medulla

Adrenal gland, zona reticularis and components of adrenal medulla, cat. H.E. stain; x200.

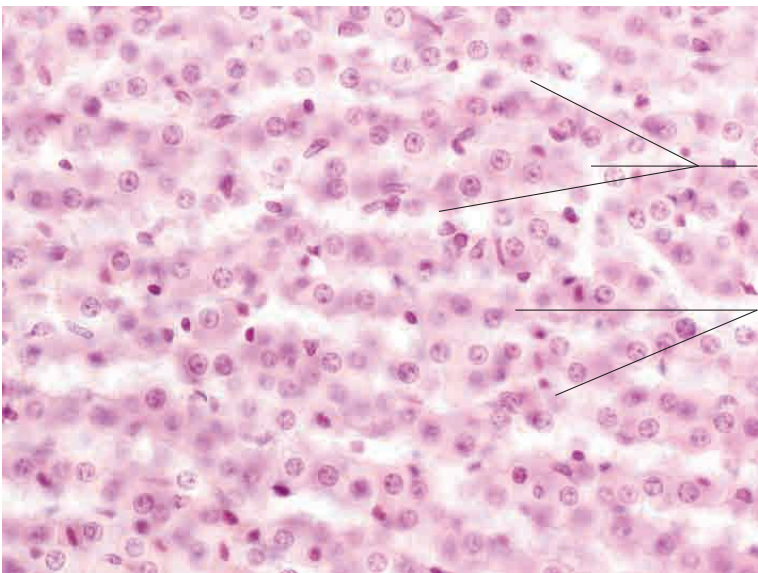
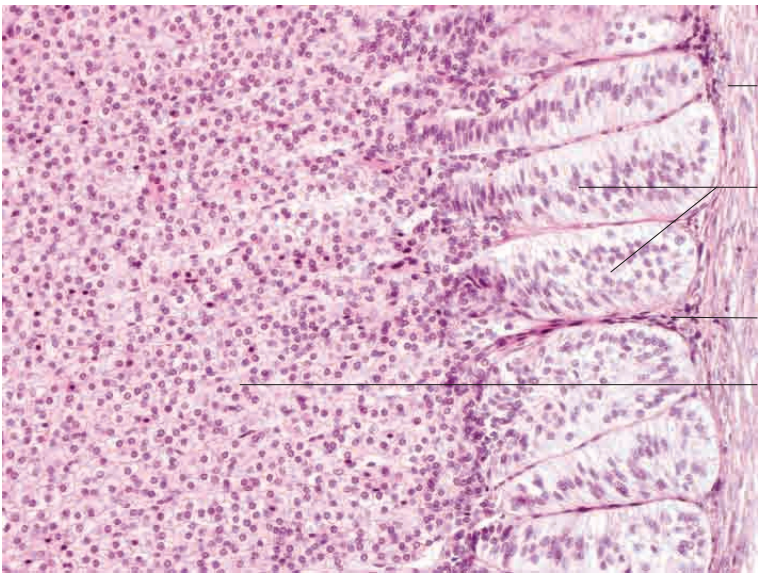
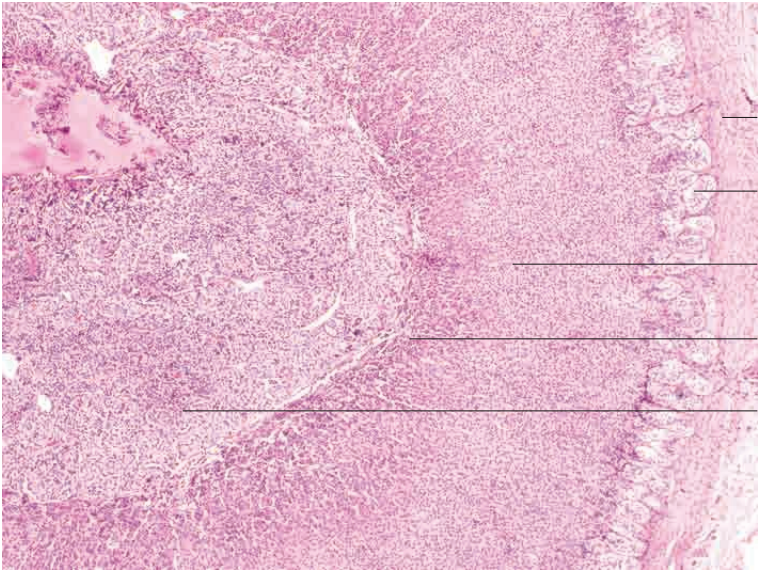


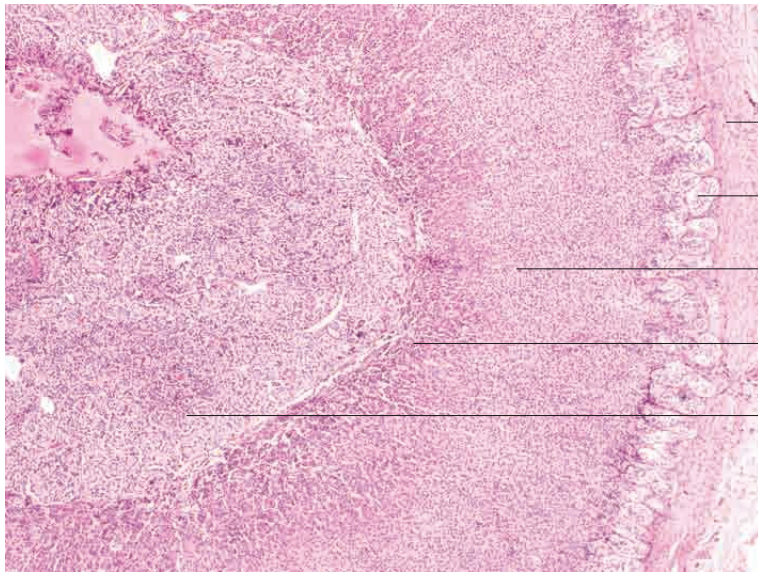
Chromaffin cells

Sinusoids

Adrenal gland, zona reticularis, cat. H.E. stain; x400.

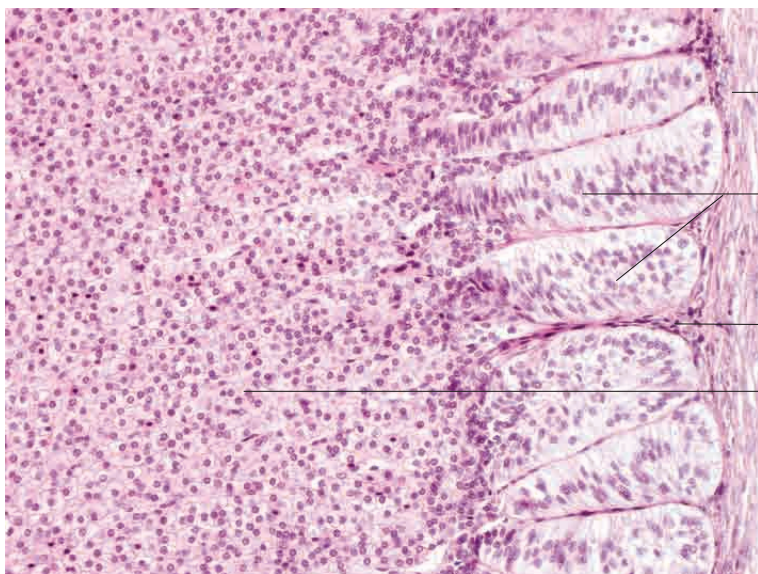
9 Endocrine system





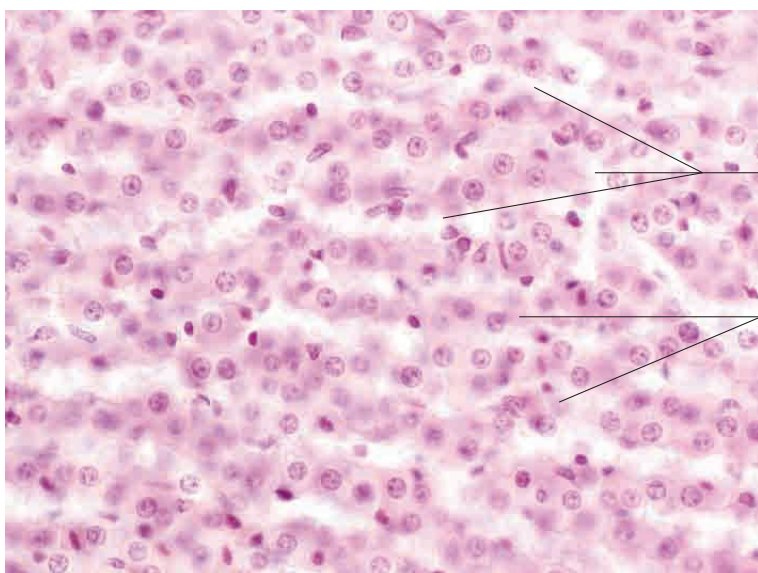
- Capsule
- Zona reticularis
- Zona fasciculata
- Zona reticularis
- Adrenal medulla

Adrenal gland, dog. H.E. stain; x40.



- Capsule
- Zona arcuata
- Connective tissue septa
- Zona fasciculata

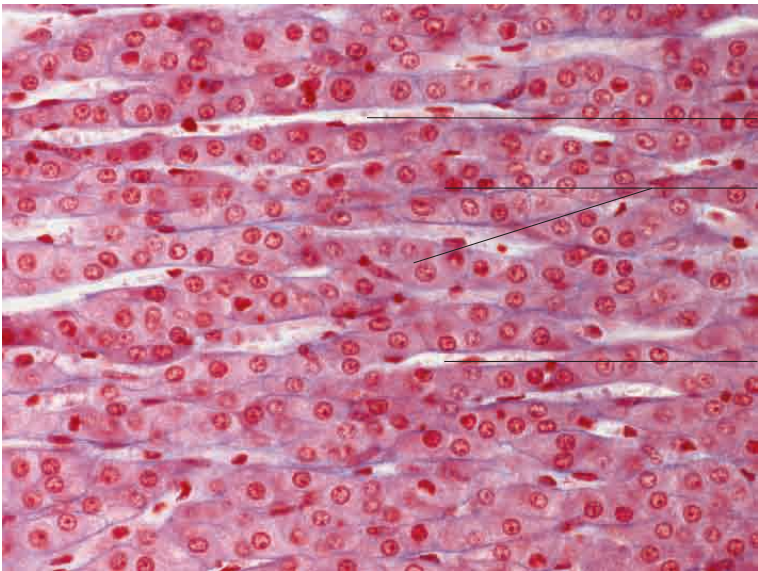
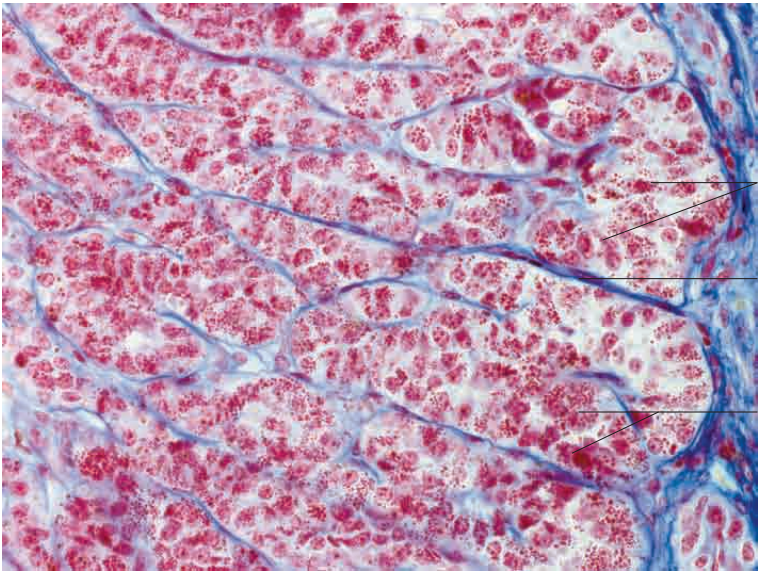
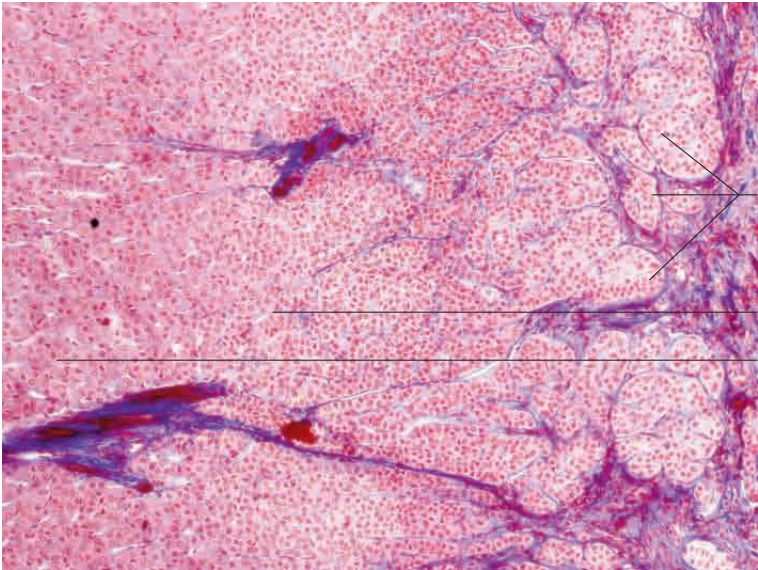
Adrenal cortex, dog. H.E. stain; x200.

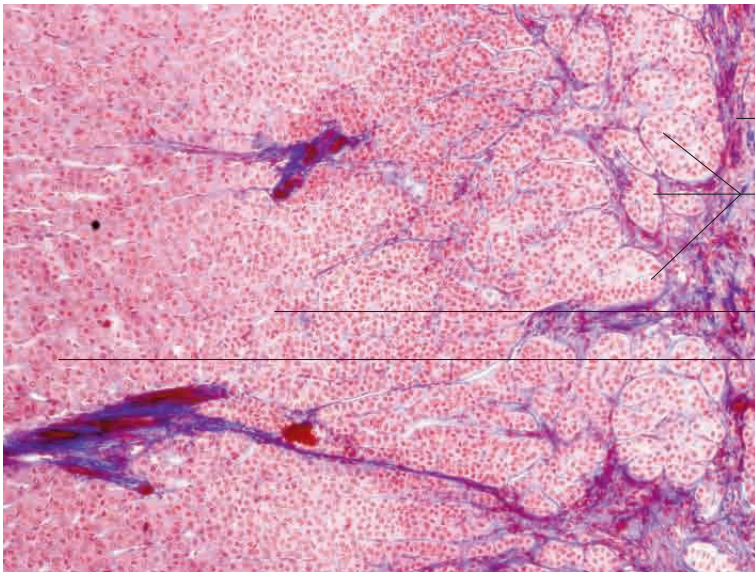


- Sinusoids
- Network of cells arranged in cords

Adrenal gland, zona reticularis, dog. H.E. stain; x400.

9 Endocrine system





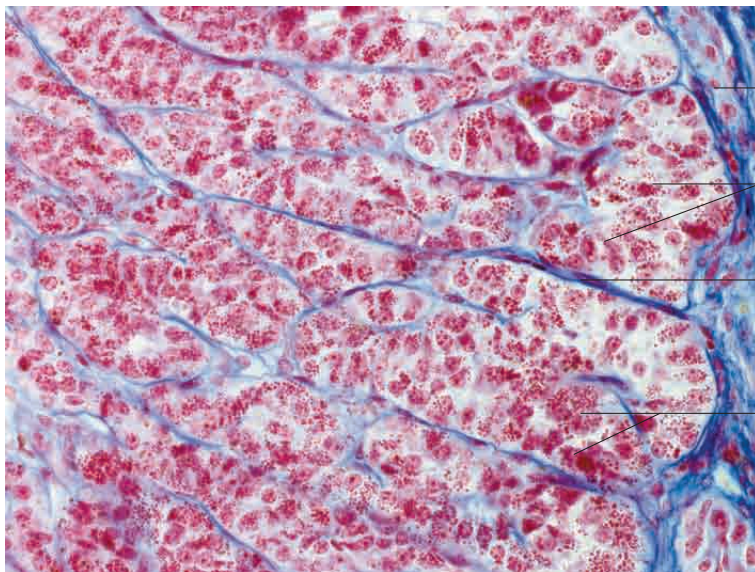
Capsule

Zona glomerulosa

Zona fasciculata

Zona reticularis

Adrenal gland, ox. Azan stain; x40.



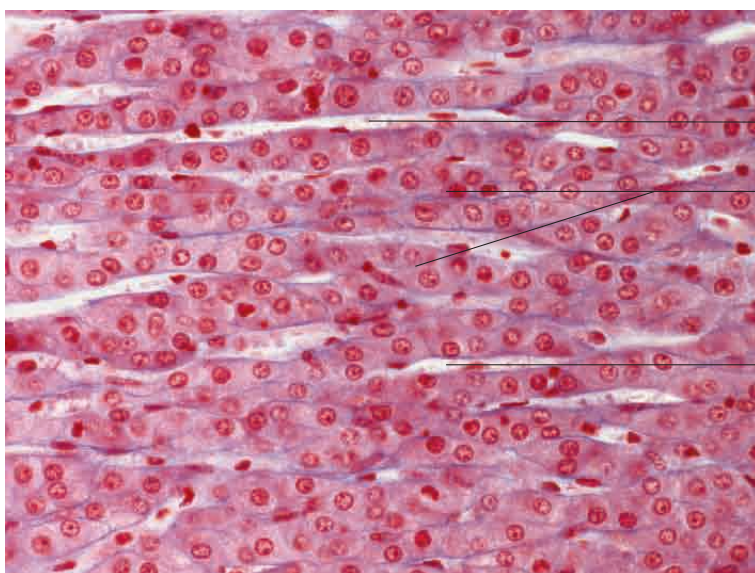
Capsule

Bundles of endocrine cells in zona glomerulosa

Loose connective tissue

Endocrine secretory granules (mineralocorticoids)

Adrenal gland, ox. Azan stain; x400



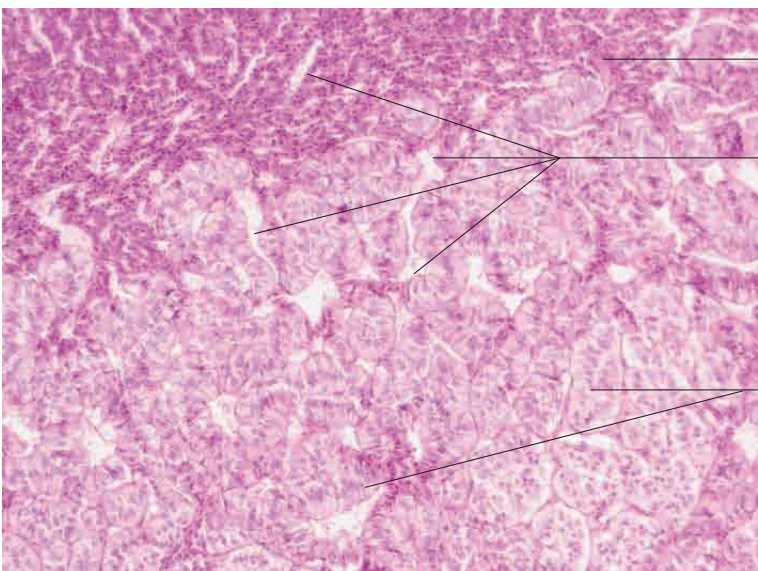
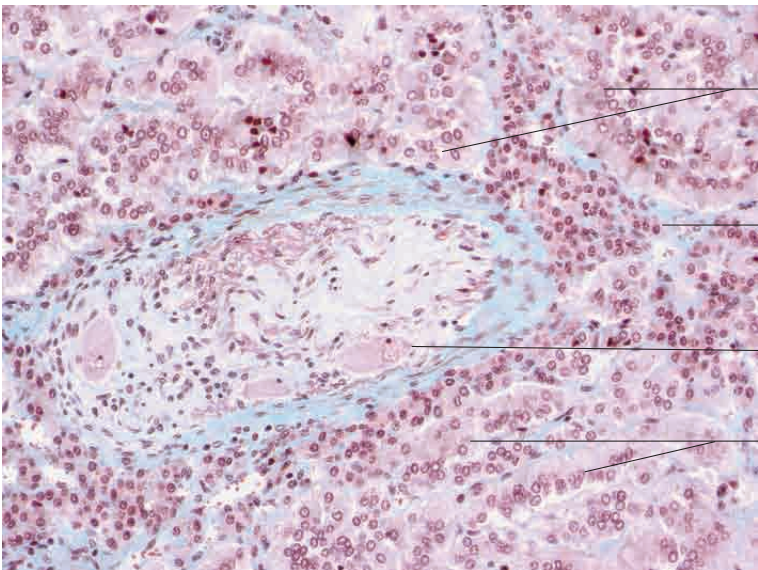
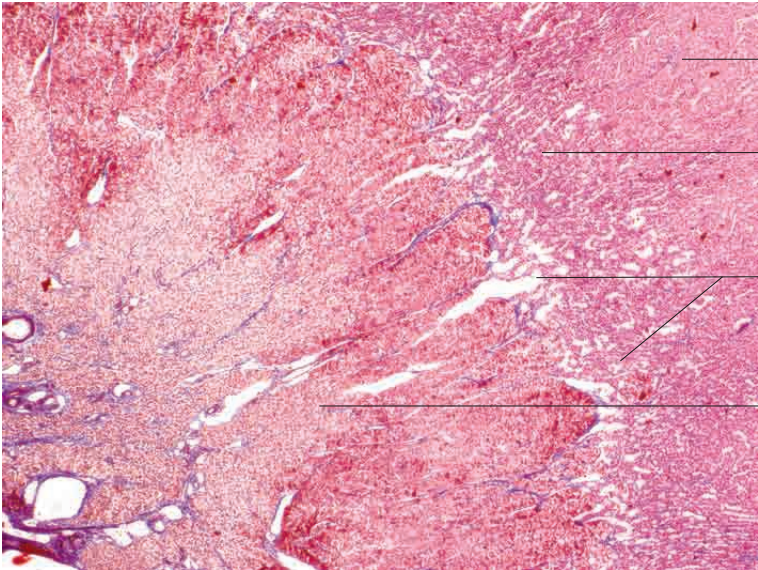
Sunisoidal capillaries

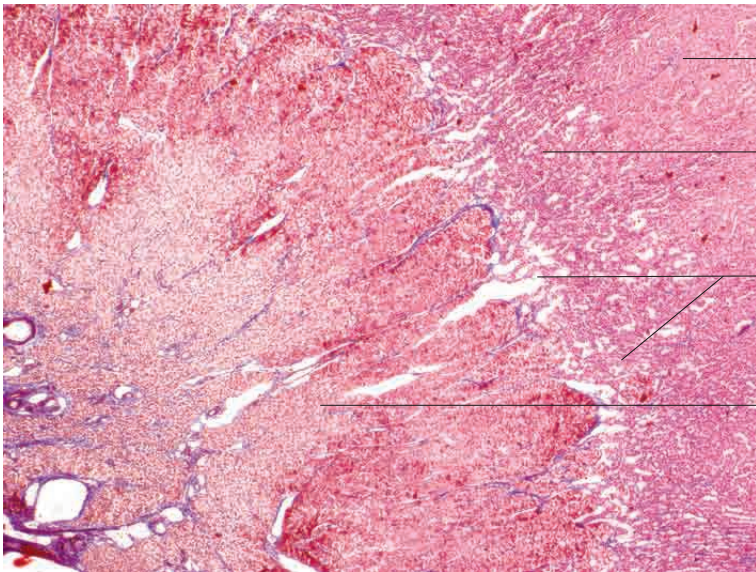
Cords of endocrine cells (glucocorticoids, cortisol and cortisone) in zona fasciculata

Sinusoidal capillaries

Adrenal gland, ox. Azan stain; x400.

9 Endocrine system





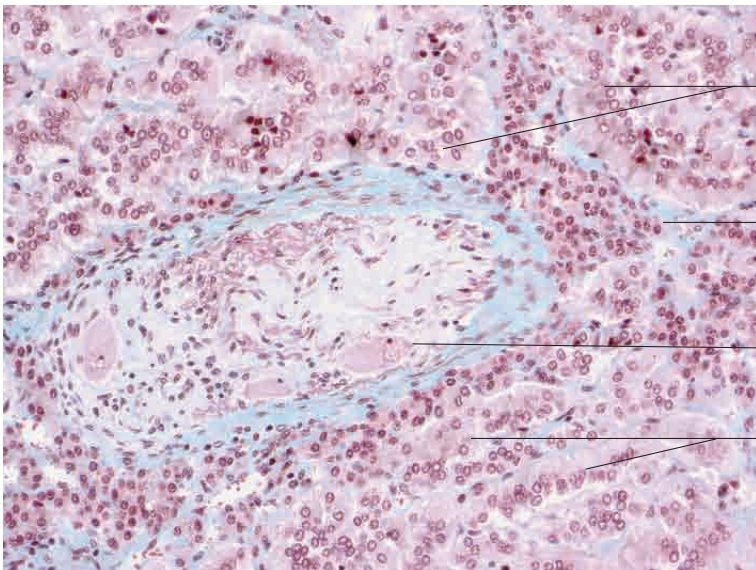
Zona fasciculata

Zona reticularis

Sinus capillaries and expanded barrier veins at transition from adrenal cortex to adrenal medulla

Adrenal medulla containing polygonal, catecholamine-producing A (large) and NA (smaller) cells

Adrenal medulla, ox. Azan stain; x30.



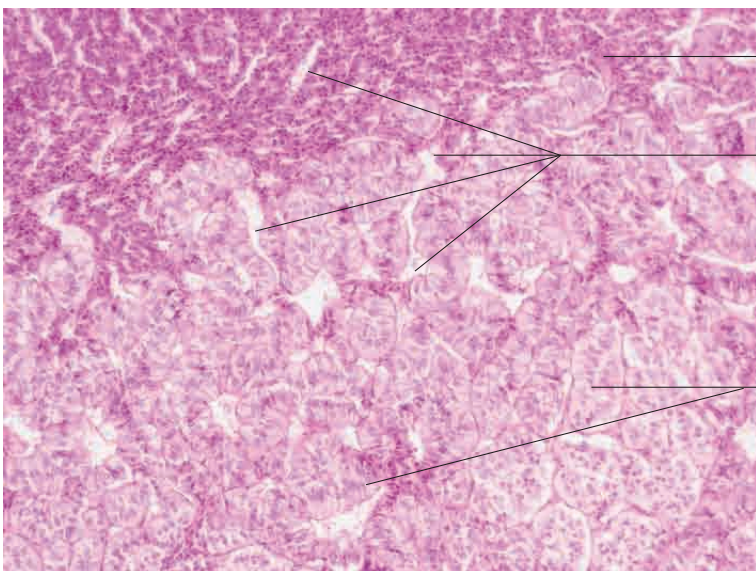
Columnar eosinophilic A cells

Loose connective tissue

Multipolar nerve cells

Columnar eosinophilic A cells

Adrenal medulla, pig.
Goldner's Masson trichrome stain; x200.



Zona reticularis, irregular cords of acidophilic endocrine cells (glucocorticoids and androgens)

Capillaries passing from the adrenal cortex into the adrenal medulla (venous sinusoids)

Columnar eosinophilic A cells in adrenal medulla

Adrenal medulla, pig. H.E. stain; x180.

9 Endocrine system

